



Signal base stations in the communications industry





Overview

Base stations form the backbone of 4G LTE and 5G networks. They transmit radio signals within a set area. In this article, we will discuss the different types of base stations with their advantages and applications. Base station (or base radio station, BS) is - according to the International Telecommunication Union 's (ITU) Radio Regulations (RR) [1] - a " land station in the land mobile service. It acts as a hub between mobile devices and the core system. It enables seamless communication by linking various wireless devices to broader networks, ensuring that data flows efficiently from one point to another.



Signal base stations in the communications industry



[Base Stations: The Core and Future of Telecom Networks](#)

In today's digital era, telecom base stations play a central role in connecting billions of devices. Whether you're in a bustling urban center or a rural area, mobile devices like smartphones and tablets depend ...

What Is A Base Station?

A base station is an integral component of wireless communication networks, serving as a central point that manages the transmission and reception of signals between cellular networks ...



Base station

Base stations use RF power amplifiers (radio-frequency power amplifiers) to transmit and receive signals.



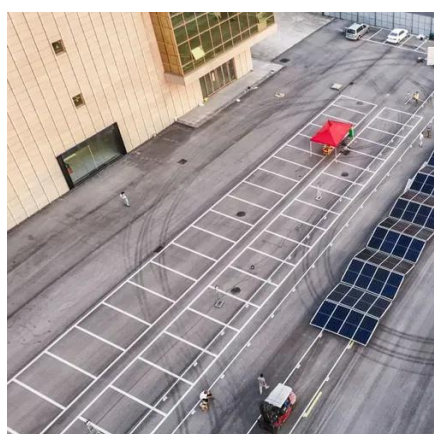
Base station

OverviewWireless communicationsLand surveyingComputer networkingSee also

In radio communications, a base station is a wireless communications station installed at a fixed location and used to communicate as part of one of the following: o a push-to-talk two-way



radio system, or; o a wireless telephone system such as cellular CDMA or GSM cell site.

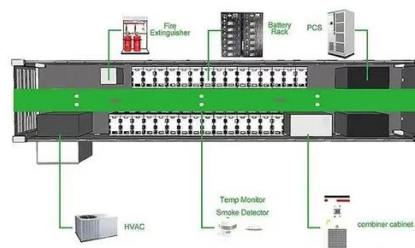


Types and Applications of Mobile Communication Base Stations

Mobile communication base station is a form of radio station, which refers to a radio transceiver station that transmits information between mobile phone terminals through a mobile ...

What Is a Base Station? Definition and How It Works

Define the central communication hubs of modern wireless technology. Learn how base stations manage capacity and ensure reliable connections.



Understanding Base Stations in Mobile Communication

In summary, base stations play a multifaceted role in mobile communication by ensuring effective signal transmission and reception, executing seamless handoff procedures, and maintaining network ...

Types of Base Stations



In this article, we will discuss the different types of base stations with their advantages and applications in the real world. A base station is a component that provides functionality as a gateway ...



[Base Stations and Cell Towers: The Pillars of Mobile Connectivity](#)

Base stations use antennas mounted on cell towers to send and receive radio signals to and from mobile devices within their coverage area. This communication enables users to make ...

What are Base Station in Telecommunications?

The Backbone of Wireless Networks A base station connects your phone to the network. It acts as a hub between mobile devices and the core system. Base stations form the backbone of ...



[Base Station Design for Wireless Communications Engineers](#)

The journey towards a smarter, more efficient network starts with innovative base station design today. This comprehensive guide underscores the evolving role of wireless communications engineers in ...





Contact Us

For catalog requests, pricing, or partnerships, please visit:

<https://www.firmaskrzypek.pl>

Phone: +48 22 426 71 90

Email: info@firmaskrzypek.pl

Scan the QR code to access our WhatsApp.

