



# Single crystal 660w photovoltaic panel size





## Single crystal 660w photovoltaic panel size



### [Photovoltaic Panel 660W: Key Dimensions and Industry Insights](#)

Most 660W photovoltaic panels measure approximately 1,640-2,384 mm in length and 992-1,303 mm in width, with thickness ranging from 35-40mm. These dimensions vary across manufacturers - think ...

### [Solar Panel Bifacial Half-cut Monocrystalline 660 Wp](#)

SOLAR PANEL 660 WATTS , TRINA SOLAR , Bifacial Half-cut , Monocrystalline , 132 Cells PV Module , Power tolerance 0/+5W , L 2384mm W 1303mm D 33mm , 38.30kg , Material Warranty 12 years , ...



### [Understanding Single Crystal Photovoltaic Panel Model Sizes for ...](#)

Why Single Crystal Photovoltaic Panel Model Size Matters Single crystal photovoltaic panels are renowned for their high efficiency and longevity, but selecting the correct model size is critical for ...

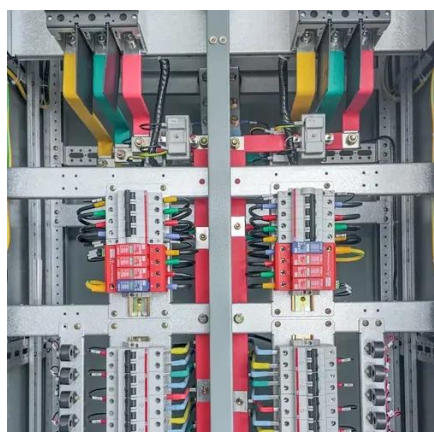
### [Sunshine 660W PV Panel Size: Complete Guide for Solar System](#)

Why Solar Panel Dimensions Matter More Than Ever in 2023 With residential rooftops shrinking and commercial solar farms maximizing wattage per square foot, the Sunshine 660W PV panel size has ...



## 660W Half-cell PERC Monocrystalline Solar Panel

Products 660W Half-cell PERC Monocrystalline Solar Panel Product Introduction: 660W solar panels are packaged with MBB M12/G12/210mm PERC solar cells, which have high power and ...



## 660W Half-cell PERC Monocrystalline Solar Panel

Products 660W Half-cell PERC Monocrystalline Solar Panel ...



## [660W HPBC Solar Panel , High-Efficiency Back Contact PV Module](#)

The 660W HPBC solar panel combines high power output with advanced back-contact cell technology to maximize energy generation per module. With reduced front-side shading, improved ...

## [660w Solar Panel , Canadian Solar 660](#)



## Watts Monocrystalline

The 660w solar panel is a high-efficiency monocrystalline solar panel available for wholesale and retails and nationwide distribution and installation here at Gennex. Monocrystalline solar panels have ...



## **Longi Solar Panel**

Key attributes Cell size 182mmx182mm Type Bifacial, Double-glass, N-TYPE Panel Efficiency 27.3% Place of Origin Jiangsu, China Panel Dimensions 2384\*1134\*35mm Brand Name Longi Model ...



## My Solar 132 Cells 660W 660 Watt Wattage Monocrystalline Photovoltaic

My Solar 132 Cells 660W 660 Watt Wattage Monocrystalline Photovoltaic Solar Panel, Find Details and Price about Solar Module Photovoltaic Solar Panel from My Solar 132 Cells 660W ...



## **660W Solar panels , xisisolar**

Electrical Specifications: \*STC : Irradiance 1000w/m<sup>2</sup>, AM1.5 spectrum, module temperature 25?  
Peak power (Pmax): 660w Cell Efficiency: 21.2%  
Maximum power voltage (Vmp):38.08V Maximum ...



## Contact Us

---

For catalog requests, pricing, or partnerships, please visit:

<https://www.firmaskrzypek.pl>

Phone: +48 22 426 71 90

Email: [info@firmaskrzypek.pl](mailto:info@firmaskrzypek.pl)

Scan the QR code to access our WhatsApp.

