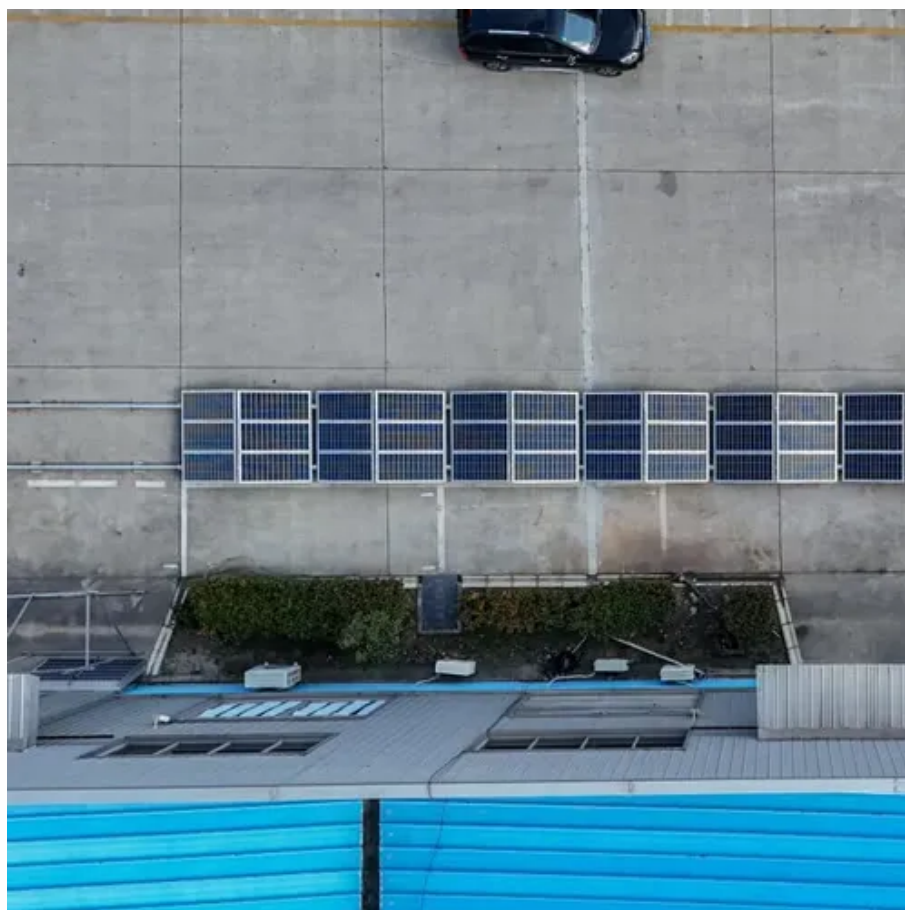




Single-phase inverter function





Single-phase inverter function

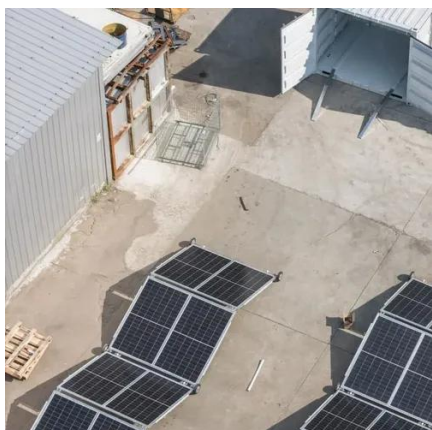


Single Phase Inverter

Single phase inverters are commonly used in residential solar power systems to convert DC electricity generated by solar panels into AC electricity for use in homes.

Single-Phase Inverter , How It Works

A single-phase inverter is a specialized device that is used to convert direct current (DC) electricity into alternating current (AC) electricity. This is a necessary process for many electric devices, as AC ...



CHAPTER 2

2.2 Voltage Control in Single - Phase Inverters The schematic of inverter system is as shown in Figure 2.1, in which the battery or rectifier provides the dc supply to the inverter. The inverter is used to ...

What is a Single Phase Output Inverter?

A single phase output inverter is an electronic device that converts direct current (DC) power into alternating current (AC) power with a single sinusoidal waveform.



Single-Phase & Three-Phase Inverters: Function and Operation

To illustrate the basis of operation of an inverter, let's consider an illustration of a single-phase inverter below: This inverter utilizes IGBTs as the switching devices, with diodes to provide the ...

Single phase inverter operation in open-loop

The main function of a single phase inverter is to generate an AC output waveform with minimal harmonic distortion from a DC input voltage. Single phase inverters are widely used in ...



How a Single Phase Inverter Works

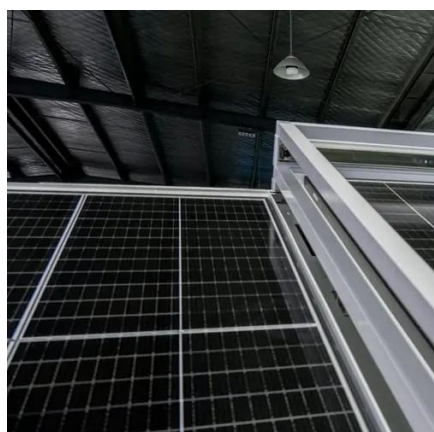
The single-phase designation refers to the output configuration, which is common in homes and small commercial settings. The inverter acts as a precise electronic bridge, converting ...

Single-Phase Inverter , How it works.



Application & Advantages

The single-phase designation refers to the output configuration, which is common in homes and small commercial settings. The inverter acts as a precise electronic bridge, converting ...



Single-Phase Inverter , How it works, Application & Advantages

A single-phase inverter operates by converting a DC input, often sourced from a battery or a fuel cell, into an AC output. This is achieved through a process known as switching.

Single-Phase Inverters

Inverters are crucial components in power electronics because they transform DC input voltage to AC output voltage. Talking about single-phase inverters, these convert a DC input source into a single ...





Contact Us

For catalog requests, pricing, or partnerships, please visit:

<https://www.firmaskrzypek.pl>

Phone: +48 22 426 71 90

Email: info@firmaskrzypek.pl

Scan the QR code to access our WhatsApp.

