



Solar curtain wall design for Abu Dhabi office building





Solar curtain wall design for Abu Dhabi office building



[Aluminum Curtain Wall Design Trends: UAE Commercial Buildings 2025](#)

Rather than demolishing aging buildings, UAE developers add new aluminum curtain walls over existing facades. This overcladding approach improves energy efficiency 60-70% while extending building life ...

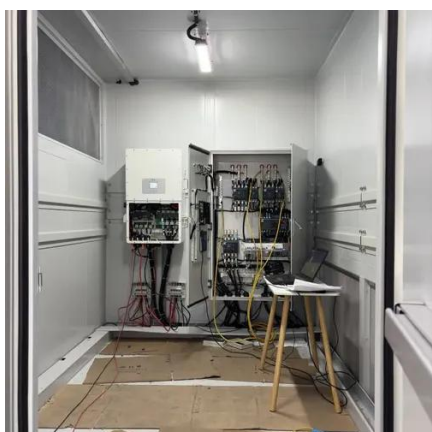
Unitized Vs. Stick Curtain Wall: Best for the UAE?

Choosing a curtain wall in the UAE? Compare unitized vs. stick systems for cost, speed, and thermal performance in Dubai's desert climate.



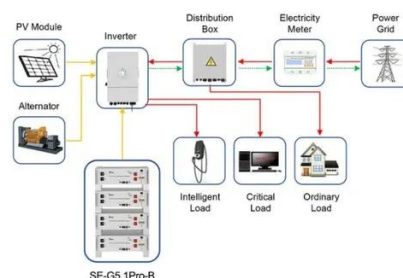
Al bahar , PPTX

The Al-Bahr Towers in Abu Dhabi feature a dynamic facade inspired by traditional Islamic mashrabiya wood lattice screens. The facade is made up of 2,000 umbrella-like transparent components on each ...



[Evaluation of adaptive facades: The case study of Al Bahr Towers in ...](#)

The two towers embed an ill-contradiction where a curtain wall in Abu Dhabi is protected by a complex electronic and mechanical technology. A root cause analysis will reveal an ill-design ...



Application scenarios of energy storage battery products

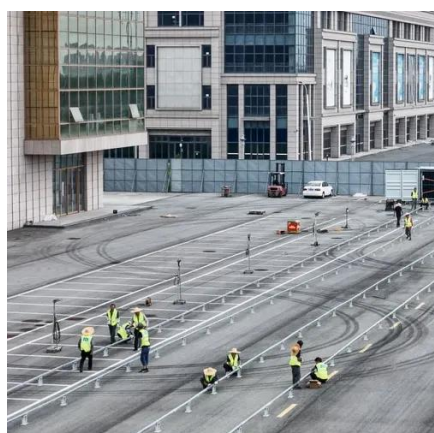


Curtain Wall Systems in UAE: Costs, Benefits & Uses

This guide explains what curtain wall systems are, what they really cost in Dubai, and which building types benefit most, helping you make informed decisions in 2025.

Al Bahr Towers: Adaptive Facade Evaluation

It presents a case study of the towers' automated dynamic solar screens that respond to sunlight movement. Methods used to evaluate the facades included interviews, standards reviews, energy ...



Al Bahar Towers Responsive Facade / Aedas

To address this, Aedas Architects designed a responsive facade for Abu Dhabi's Al Bahar Towers, drawing inspiration from the mashrabiya, a traditional Islamic lattice shading device.

[Evaluation of adaptive facades: The case](#)



[study of Al Bahr Towers in ...](#)

Abstract Introduction Methodology Case Study Results Discussion and Conclusion Competing Interests Acknowledgements References

The primary objectives of this study were to present a detailed case study description of a building with an adaptive facade and to derive maps of the underlying decisions on how it was designed, operated, maintained, and assessed. This study required time, effort, and analysis to interview Al Bahr project key stakeholders. The required data interp See more on glassonweb Author: Shady Attiashaheen primeworks



Best Curtain Wall System Abu Dhabi , Glass Curtain ...

Our designs allow for more natural light, reducing the need for artificial lighting while offering structural integrity. The advanced materials we use ensure high ...



[Responsive Façades: A case study of Al Bahar Towers](#)

Using parametric models for the shading panels, the computational design team at Aedas was able to simulate their operation for different solar conditions throughout the year - varying ...

INSTRUCTIONS FOR PREPARATION OF PAPERS

ABSTRACT: This paper presents the Al Bahr Towers recently completed in Abu Dhabi. It describes the innovative adaptive facade that wraps around the towers and adapts in accordance to the solar ...



[Best Curtain Wall System Abu Dhabi ,](#)



Glass Curtain Wall , Aluminum

Our designs allow for more natural light, reducing the need for artificial lighting while offering structural integrity. The advanced materials we use ensure high insulation, helping to maintain temperature ...





Contact Us

For catalog requests, pricing, or partnerships, please visit:

<https://www.firmaskrzypek.pl>

Phone: +48 22 426 71 90

Email: info@firmaskrzypek.pl

Scan the QR code to access our WhatsApp.

