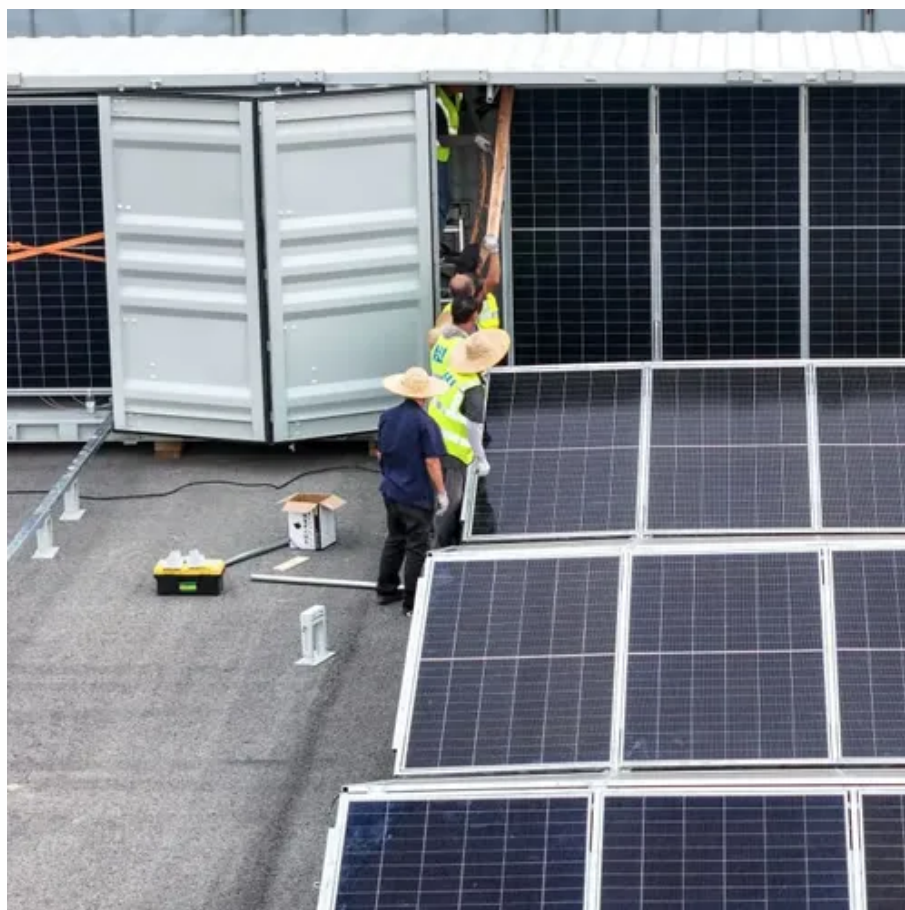




# Solar photovoltaic panel wattage size





## Overview

---

Residential solar panels come in a compact size with about 60 cells or 120 half-cells per module. 7 meters tall and one meter wide, these panels are simple to lift and place on rooftops. They generate 300 to 400 watts each, ideal for most homes. Example: 5kW solar system is comprised of 50 100-watt solar panels. Alright, your roof square footage is 1000 sq ft. Can you put a 5kW solar system on your roof?

For that, you will need to know what size is a typical 100-watt solar panel, right?

To bridge that gap of very useful knowledge needed. Solar panel size shapes everything from the watts to the ease of lifting a module onto a roof.



## Solar photovoltaic panel wattage size



### [Solar Panel Size & Dimensions Guide 2025 \\_Complete Specs](#)

In this comprehensive guide, you'll learn everything you need to know about solar panel sizing, from standard dimensions to weight considerations, helping you determine the perfect solar solution for your ...

### [Guide to Solar Panel Sizes & Dimensions \(October 2025\)](#)

Solar panel sizes and wattage range from 250W to 450W, taking up 1.6 to 2 square metres per panel. One of the most important things to consider when getting solar panels for your ...



### [Solar Panels Size & Weight \(Including Commercial Dimensions\)](#)

Most 60-cell residential solar panels produce around 300 watts of power each. Commercial solar panels typically include 72 solar cells and measure up to 6 feet wide (78 inches ...



### [Understanding Solar Panel Sizes and Wattage: A Complete Tutorial](#)

When considering solar panel sizes and wattage, you'll typically find options ranging from 250 to 400 watts. Opting for higher wattage units can be a game-changer, especially for those with ...



## standard solar photovoltaic panel sizes explained

When we talk about the physical size of a solar panel, we are usually discussing its length, width, and thickness. These dimensions are primarily standardized by the number of individual photovoltaic ...

## Solar Panel Sizes and Wattage Explained

This curated list includes top-brand calculators for determining panel size, output and battery capacity for your system along with wattage estimates for monthly and yearly energy usage.



## [Solar Panel Size Guide , Best Panel Size for Your Roof](#)

Solar cells are assembled in grids, and the most common configurations are 60-cell panels for residential use and 72-cell panels for commercial or utility use. A 60-cell panel (often seen on ...



## [Standard Solar Panel Sizes And Wattages](#)



## (100W-500W Dimensions)

The goal here is to get to the average solar panel size by wattage. You can find typical dimensions of 100W, 150W, 170W, 200W, 200W, 220W, 300W, 350W, 400W, and 500W solar panels summarized ...



## The Ultimate Guide to Solar Panel Size, Weight & Wattage (2025)

Standard residential solar panels are typically around 5.8 feet long by 3.5 feet wide and weigh between 40 to 50 pounds. However, the exact dimensions depend heavily on the panel's ...

## Solar Panel Size and Wattage Chart: Standard Sizes & Uses for Each

Using a solar panel size chart can help you choose the best types of solar panels for your home or application. Because the size of a standard solar panel can vary, a chart that outlines the wattage ...





## Contact Us

---

For catalog requests, pricing, or partnerships, please visit:

<https://www.firmaskrzypek.pl>

Phone: +48 22 426 71 90

Email: [info@firmaskrzypek.pl](mailto:info@firmaskrzypek.pl)

Scan the QR code to access our WhatsApp.

