



# Solar power generation foundation construction site





## Overview

---

These foundations are pre-cast off-site and installed on-site, making them ideal for areas where digging or ramming is impractical. Key Benefits:

- Suitable for various soil types, including weak or erodible soils.
- No heavy machinery required for installation.

Solar panel foundation design requirements depend on multiple factors including mounting structure height, EPA values, soil conditions, and local wind load requirements. Understand how project scale, cost, installation convenience, adjustability, maintenance, and environmental considerations shape the choice of the most suitable foundation type for both ground-mounted. However, the design foundation depends upon various parameters i. A well-designed solar foundation should be cost-effective without sacrificing reliability. While the design structure associated with. Ground mount solar foundations are the structural anchoring systems that secure solar panels to the ground, providing stability against wind, snow, and seismic forces while ensuring optimal energy production for decades.



## Solar power generation foundation construction site

---

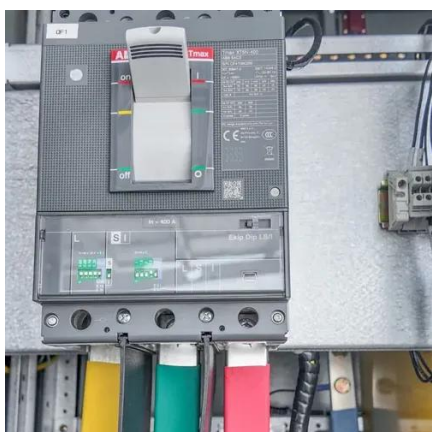
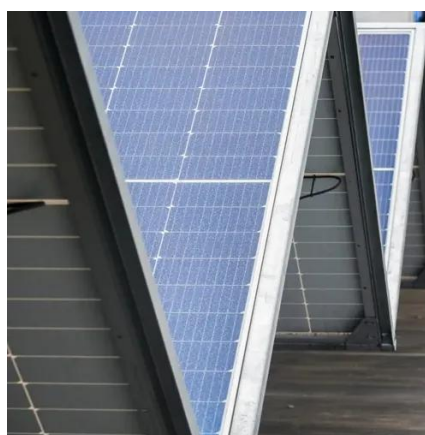


### [Ground Mount Solar Foundations 101: Anchoring Your Solar Investment](#)

This guide will walk you through everything you need to know to make the right foundation choice for your solar investment.

### **How a photovoltaic park is built , Enel Group**

Find out how a solar park is built, from the construction phase to energy production, and how a photovoltaic system operates.



### [Building for Solar Growth--Selecting the Right Foundation for Any Site](#)

Selecting the right foundation is key to mitigating risks, overcoming hurdles, and constructing a project that delivers reliable solar power on budget and on time.

### **The Comprehensive Guide to Solar Farm Construction**

Explore the detailed solar farm construction process, covering site assessments, regulatory needs, and crucial stakeholder engagement. ??



### [Why Geo Technical Engineering is Important for Solar Foundation ...](#)

We, at Zigron, have Geotechnical engineers who can help solar companies investigate solar sites, and increase project safety and reliability while reducing project costs, and incorporating ...



### [Ground Mounted PV Solar Panel Reinforced Concrete Foundation](#)

The most common application of solar energy collection outside agriculture is solar water heating systems. This case study focuses on the design of a ground mounted PV solar panel foundation ...



### [Photovoltaic System Foundations: Key Factors for Optimal Selection](#)

Understand how project scale, cost, installation convenience, adjustability, maintenance, and environmental considerations shape the choice of the most suitable foundation type for both ...



## **How to make the solar pole**



## foundation , NenPower

Moving forward, recognizing the intricate relationship between site analysis, material selection, planning installation, and regulatory compliance in the construction of solar pole ...



### [Choosing the Right Foundation for Your Solar Power Plant: A Guide ...](#)

With our extensive expertise in foundation systems, we help you optimize performance and reduce costs. From design to implementation, HQ Mount is your partner in building sustainable ...

### [Solar Panel Foundation Design Guide , Installation & Engineering](#)

Key considerations for solar installations include foundation depth (typically 1/6 of pole height plus 2 feet), concrete strength, reinforcement design, and soil bearing capacity.





## Contact Us

---

For catalog requests, pricing, or partnerships, please visit:

<https://www.firmaskrzypek.pl>

Phone: +48 22 426 71 90

Email: [info@firmaskrzypek.pl](mailto:info@firmaskrzypek.pl)

Scan the QR code to access our WhatsApp.

