



Solar power station location





Overview

The Global Energy and Renewables Map Viewer is an interactive web map which allows visitors to explore renewable and thermal power plant facilities around the world. Select sites, draw rectangles or polygons by clicking the respective map controls. Calculate energy production for selected sites. It is provided by the World Bank Group as a free service to. The following is a list of photovoltaic power stations that are larger than 500 megawatts (MW) in current net capacity. How much electricity is generated from solar farms each year?

According to the latest data from the International Energy Agency (IEA), the global electricity generation from solar photovoltaic (PV). We show the location of the projects from our extensive database in the form of place markers on a world map. We used the resources of Google Maps to give access to user-friendly facilities for navigating, zooming in and out, and switching between satellite, map and hybrid views. Environmental Protection Agency. This map displays information on location, fuel type, electric generation, generating capacity, ownership, and emissions for over 10,000 power plants.



Solar power station location



Global Solar Atlas

Start exploring solar potential by clicking on the map. Select sites, draw rectangles or polygons by clicking the respective map controls. Calculate energy production for selected sites. The Global Solar ...

List of photovoltaic power stations

The following is a list of photovoltaic power stations that are larger than 500 megawatts (MW) in current net capacity. Most are individual photovoltaic power stations, but some are groups of co-located plants owned by different independent power producers and with separate transformer connections to the grid. Wiki-Solar reports total global capacity of utility-scale photovoltaic plants to be some 96 GWAC which generated 1....



NASA POWER , Data Access Viewer (DAV)

The NASA POWER project's Data Access Viewer (DAV) is an interactive web-mapping application providing access to NASA solar and meteorological data.

Interactive Map of U.S. Power Plants

This map displays information on location, fuel type, electric generation, generating capacity, ownership, and emissions for over 10,000 power



plants across the country.



[Wiki-Solar maps of utility-scale solar projects worldwide](#)

We show the location of the projects from our extensive database in the form of place markers on a world map. We used the resources of Google Maps to give access to user-friendly facilities for ...



[Where are solar photovoltaic power stations built? , NenPower](#)

The construction of solar photovoltaic power stations occurs in various locations around the globe, driven by factors such as radiation levels, land availability, and regulatory frameworks.



[4MW Rooftop Distributed Power Station in Fengxian District, Shanghai](#)

Distributed Commercial Solutions Household PV Solutions Carbon Free Power Plant BESS Solutions Global Project References Sustainability Upholding Our Purpose Fulfilling Our Commitments ...

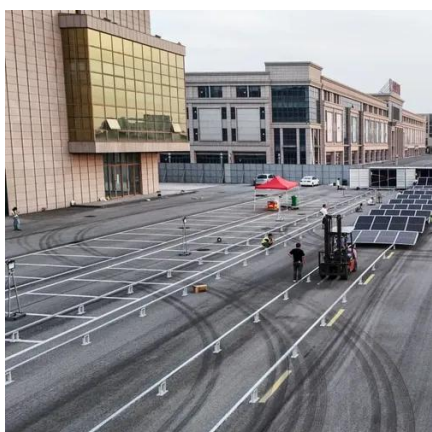


Global Energy and Renewables Map



Viewer

This web map will allow you to explore global power plants and U.S. renewable energy facilities using text search and map visualization tools.



[Map of the Week: Mapping the World's Solar Power Plants](#)

Mapping the exact locations of current and functioning solar plants is a critical step in addressing these challenges and moving the energy system towards renewables.

[Solar Power Plants Across the Globe \(World Map\) , database.earth](#)

Data and information about power plants and their location across the globe, plotted on an Interactive world map





Contact Us

For catalog requests, pricing, or partnerships, please visit:

<https://www.firmaskrzypek.pl>

Phone: +48 22 426 71 90

Email: info@firmaskrzypek.pl

Scan the QR code to access our WhatsApp.

