



Solar thermal power generation collector tower construction





Solar thermal power generation collector tower construction



[Power Tower System Concentrating Solar-Thermal Power Basics](#)

In power tower concentrating solar power systems, a large number of flat, sun-tracking mirrors, known as heliostats, focus sunlight onto a receiver at the top of a tall tower.

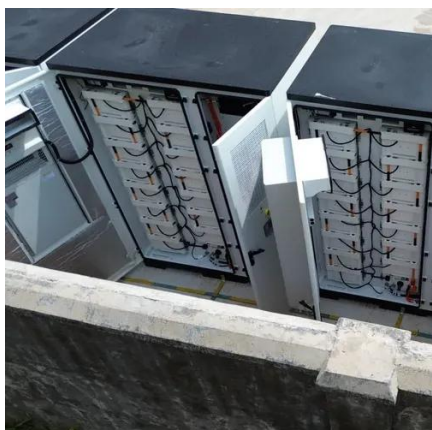
[Experiment and dynamic simulation of a solar tower collector system for](#)

In this work, a solar tower collector system for solar power generation was constructed and the experiment was carried out. An integrated dynamic simulation model consisted of heliostat field and air ...



How CSP Works: Tower, Trough, Fresnel or Dish

There are four types of CSP technologies: The earliest in use was trough, and the predominant technology now is tower. This is because tower CSP can attain higher temperatures, resulting in greater efficiency.



[Solar thermal power generation collector tower construction](#)

A solar thermal wind tower (STWT) is a low-temperature power generation plant that mimics the wind cycle in nature, comprising a flat plate solar air collector and central



Concentrated solar power

Professor Giovanni Francia (1911-1980) designed and built the first concentrated-solar plant, which entered into operation in Sant'Ilario, near Genoa, Italy in 1968. This plant had the architecture of today's power tower ...



Exploring Solar Thermal Collector Technologies: Efficiency, Performance

Nonetheless, traditional designs frequently experience optical losses, ineffective thermal storage and variable performance under different levels of sunlight. This review conducts a systematic assessment of ...



An Overview of Heliostats and Concentrating Solar Power Tower Plants

This overview will focus on the central receiver, or "power tower" concentrating solar power plant design, in which a field of mirrors - heliostats, track the sun throughout the day and year to reflect solar energy to a receiver ...



10.3. Central Receiver Systems



A typical example of such a system is a solar power tower system, which consists of multiple tracking mirrors (heliostats) positioned in the field around a main external receiver installed on a tower. Such systems are ...



Solar power tower

A solar power tower, also known as 'central tower' power plant or 'heliostat' power plant, is a type of solar furnace using a tower to receive focused sunlight. It uses an array of flat, movable mirrors (called heliostats) ...

Solar explained Solar thermal power plants

A solar power tower system uses a large field of flat, sun-tracking mirrors called heliostats to reflect and concentrate sunlight onto a receiver on the top of a tower.





Contact Us

For catalog requests, pricing, or partnerships, please visit:

<https://www.firmaskrzypek.pl>

Phone: +48 22 426 71 90

Email: info@firmaskrzypek.pl

Scan the QR code to access our WhatsApp.

