



Specifications and requirements for photovoltaic panel pile position measurement





Overview

Photovoltaic panel pile position measurement is used for solar array installations on roofs for the derate factors familiar to those who describe the calculations for PV module energy rating. Due to the complexity of the procedure of the standard, several laboratories have developed. The Renewable Energy Ready Home (RERH) specifications were developed by the U.S. Environmental Protection Agency (EPA) to assist builders in designing and constructing homes equipped with a set of features that make the installation of solar energy systems after the completion of the home's. Photovoltaic solar panel pile position measurement line that is normal to the surface of the panel). This is the most important angle. Concrete piles provide excellent resistance to compression and can be used as foundation piles to support trackers and panels. Because of the potential for variability in the type of reaction force utilized during pile load testing. Ensuring accuracy in pile load testing is a critical part. What is the minimum array area requirement for a solar PV inverter?

Although the RERH specification does not set a minimum array area requirement, builders should minimally specify an area of 50 square feet in order to operate the smallest grid-tied solar PV inverters on the market.



Specifications and requirements for photovoltaic panel pile position m



Photovoltaic solar panel pile position measurement

Select your timezone and enter your coordinates (latitude and longitude) to calculate the optimal orientation for fixed solar panels, twice adjusted solar panels, quarterly (seasonally) adjusted solar ...

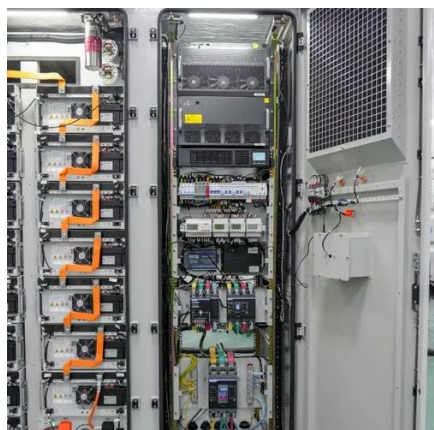
[Solar Photovoltaic: SPECIFICATION, CHECKLIST AND GUIDE](#)

The RERH specifications and checklists take a builder and a project design team through the steps of assessing a home's solar resource potential and defining the minimum structural and system ...



[Foundations of Solar Farms: Choosing the Right Piles and Installation](#)

This process involves applying a controlled load to the pile and measuring its response, ensuring that the foundation is capable of supporting the solar panels effectively.



[Photovoltaic panel pile position measurement standard](#)

To calculate the structural load of solar panels on a roof, several factors must be considered, including the number and weight of the panels, the weight of the mounting system and components, and any ...



✓ TELECOM CABINET

✓ BRAND NEW ORIGINAL

✓ HIGH-EFFICIENCY

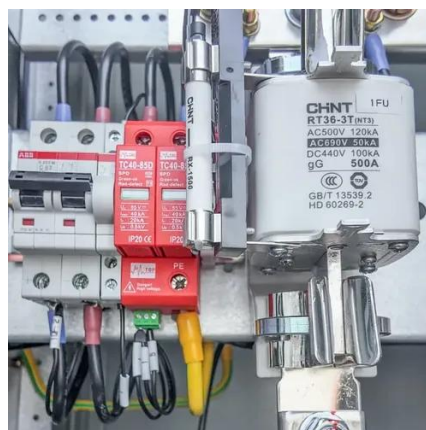


[Standard table of photovoltaic panel pile dimensions](#)

In this paper results of tension tests on driven fin piles proposed to support the solar panel arrays are presented. The piles consisted of steel open pipe piles with four fins

Photovoltaic support pile test requirements

A pull test needs to be done before installing helical piles to determine the embedment depth and ensure there is enough resistance to satisfy the load requirements of



[Photovoltaic pile support installation specifications](#)

The installation selection of photovoltaic ground brackets is mainly based on factors such as the fixing method of the bracket, terrain requirements, material selection, and the weather



Installation of Piles



Each pile will be color coded or numbered to identify each of the 12 pile types. Contractor shall document the color code or number of the pile at each location and verify it is the correct pile.



Photovoltaic sheet pile height specification requirements

2.2 Sheet pile set out, and location marking, are completed to confirm the position of the sheet piles. 2.3 Guiding system or frame is used to maintain position and verticality of the sheet

ENSURING ACCURACY OF SOLAR PILE LOAD TESTING

Real-time Axial-tension pile load testing output can be seen by field engineer during testing.





Contact Us

For catalog requests, pricing, or partnerships, please visit:

<https://www.firmaskrzypek.pl>

Phone: +48 22 426 71 90

Email: info@firmaskrzypek.pl

Scan the QR code to access our WhatsApp.

