



Sri jayawardenepura kotte increased renewable energy penetration



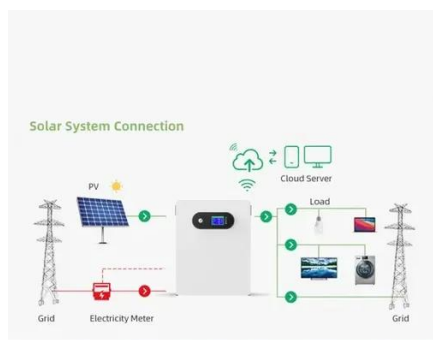


Overview

This research examines the gap between the theoretical potential and the actual implementation of renewable energy sources in Sri Lanka, emphasizing the technological, economic, sociocultural, and policy-related obstacles that hinder their full utilization. gy generation in Sri Lanka. The data and analysis presented herein aim to guide investment decisions within the c untry's electricity sector. The main focus is on Non-Conventional Renewable Energy (NCRE) sources, including Mini Hydro, Wind, Solar PV, Biomass op PV typically below 1 MW. Cities ranked 5880th and 7550th (\$992 vs \$636) in the list of the most expensiv more expensive than in Sri Jayawardenepura Kotte. [2] Sri Jayawardenepura Kotte is located adjacent to the urban area of Sri Lanka's de facto economic capital, Colombo. The objective of the study is to conduct. The Sri Lanka Sustainable Energy Authority was established upon realising the necessity of having an apex institution to drive Sri Lanka towards a new level of sustainability in energy supply and use, through increasing indigenous energy and improving energy efficiency and energy conservation. .



Sri jayawardenepura kotte increased renewable energy penetration



[New Renewable Energy , Sri Lanka Sustainable Energy Authority](#)

One of the main objectives of the Authority is to identify, assess and develop renewable energy resources with a view to enhancing energy security and thereby derive economic and social benefits ...

[Sri Jayewardenepura Kotte , Sri Lanka. Map, History.](#)

As Sri Jayewardenepura Kotte, it was the capital of the Sinhalese kingdom of Kotte from 1415 to 1565, largely owing to the lagoons, rivers, and swamps that still ...



RENEWABLE GENERATION REPORT

Introduction: gy generation in Sri Lanka. The data and analysis presented herein aim to guide investment decisions within the c untry's electricity sector. The main focus is on Non-Conventional ...

Overview

As a result of its highly developed road network, efficient infrastructure facilities and rapid expansion of centers of service have made it one of the most sought after urban centres of the island. Sri ...



Sri jayawardenepura kotte energy storage economics

The challenges to renewables from transmission, seasonal storage, grid flexibility, demand response, and digitization (among others) are substantial, but the benefits from zero-cost inputs, clean air, and ...

[Trend of green cover change in Sri Jayawardenapura ...](#)

Urban heat Islands increase the demand for cooling energy and accelerate the formation of Smog. They are created when natural vegetation is replaced by ...



[sri jayawardenepura kotte energy storage market analysis](#)

In IRENAs REmap analysis of a pathway to double the share of renewable energy in the global energy system by 2030, electricity storage will grow as EVs decarbonise the ...



PREPARATORY SURVEY ON SRI



JAYAWARDENAPURA ...

The GOSL (2016) identified the sewerage system for Sri Jayawardenapura Kotte MC and its surrounding areas as an important infrastructure for creating an environment for the economic growth in the ...



DETAILS AND PACKAGING



1 USER MANUAL PDF 2 RJ45 Cable For RS485/CAN 3 Battery In Parallel Cables
4 RJ45 TO USB Monitor Cable 5 M8 Terminal*4

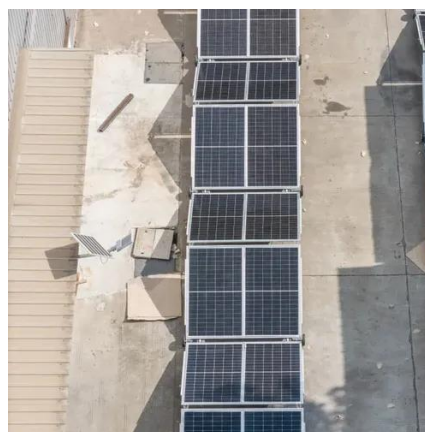
Sri Jayawardenepura Kotte

OverviewHistoryLegislatureInfrastructureClimateS ports and recreationNotable residents

The village of Darugama lay at the confluence of two streams, the Diyawanna Oya and the Kolonnawa Oya. As Darugama was a naturally secure place, it was not easy for enemies to enter it. Here, in the 13th century, a local chieftain, Nissanka Alagakkonara, built a Kotte, or fortress. Alagakkonara is mentioned by Ibn Batuta as ruling in Kurunegala, but other sources in...

Evaluating the Viability of Renewable Energy Sources in Sri Lanka

The objective of the study is to conduct a comprehensive analysis of the factors influencing the adoption of renewable energy, particularly in the context of addressing climate ...





Contact Us

For catalog requests, pricing, or partnerships, please visit:

<https://www.firmaskrzypek.pl>

Phone: +48 22 426 71 90

Email: info@firmaskrzypek.pl

Scan the QR code to access our WhatsApp.

