



Steel Plant Electric Energy Storage Equipment





Steel Plant Electric Energy Storage Equipment

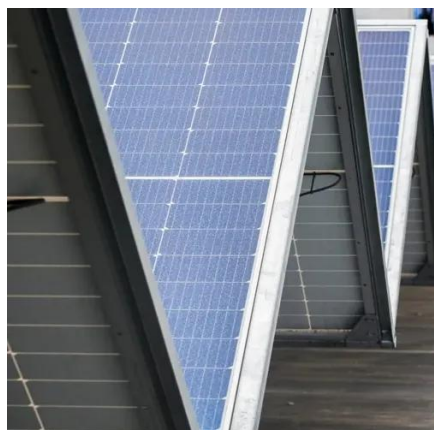


[Exploring Trends in Energy Storage Solutions for Steel Manuf](#)

The Need for Advanced Energy Storage Steel manufacturing is an energy-intensive process, accounting for approximately 7-9% of global CO2 emissions. The integration of renewable ...

[Large Scale Energy Storage System Delivered Jiangsu Steel Plant Energy](#)

In order to enhance energy efficiency and reduce carbon emissions, SolarEast BESS delivered a 10MW/39MWh liquid-cooled battery energy storage system for a large steel plant in ...

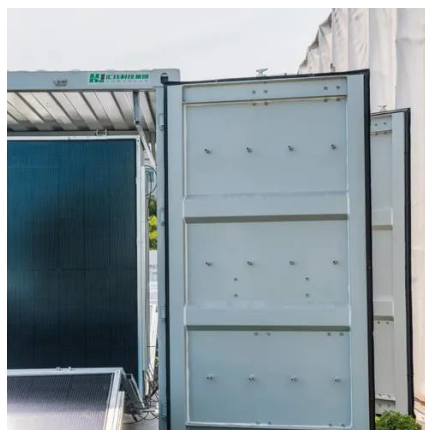


[Energy & Power for the Steel and Aluminum Industries](#)

Energy and Power Solutions for the Electrification of Heavy Industry Industrial-scale power systems are critical to the efficiency and reliability of modern steel and aluminum plants. At ...

[Steel-Based Gravity Energy Storage: A Two-Stage Planning](#)

First, a stackable steel-based gravity energy storage (SGES) structure utilizing idle blocks is designed to reduce investment costs. Second, a gravity energy storage capacity planning model is ...



[What kind of energy storage is suitable for steel plants?](#)

By thoroughly analyzing these factors, steel producers can find optimal energy storage solutions that meet their diverse operational challenges. In summation, identifying the right energy ...



STEEL PLANT ELECTRIFICATION

POWER CONVERSION SYSTEMS FOR THE ELECTRIFICATION OF STEEL PRODUCTION

Dynapower is putting its decades of experience in renewable energy sources for all ...



[Electric Energy Storage Solutions for Steel Plants: Cutting Costs ...](#)

Steel manufacturing is among the most energy-intensive industries, where even minor efficiency improvements can save millions annually. This article explores how modern electric energy storage ...



[Steel Plant Energy Storage Power](#)



Stations: Solving Heavy ...

You know how they say "heavy industries will always be power-hungry"? Well, here's the thing - global steel plants consumed over 1,200 TWh of electricity last year, roughly 8% of worldwide industrial ...



Steel Plant Energy Storage: Powering the Future of Sustainable

A roaring blast furnace in a steel plant guzzling enough electricity to power a small city. Now imagine those same factories storing energy like a squirrel hoarding acorns for winter. That's ...



Layout 1

The use of energy storage can provide a solution to these considerations. On site energy storage systems (ESS) can take the form of electrochemical, electro-mechanical, flywheel (FESS), ...





Contact Us

For catalog requests, pricing, or partnerships, please visit:

<https://www.firmaskrzypek.pl>

Phone: +48 22 426 71 90

Email: info@firmaskrzypek.pl

Scan the QR code to access our WhatsApp.

