



Swaziland s photovoltaic base station





Overview

The power station is located in the town of Matsapha, in Manzini Region, in central Eswatini. The solar farm sits adjacent to the government-owned 15 megawatt Edwaleni Hydroelectric Power Station. [3]. Edwaleni Solar Power Station, is a 100 megawatts solar power plant under construction in Eswatini. The power plant, which. Lavumisa Solar PV Park is a 10MW solar PV power project. It has been developed in multiple phases. Electricity will be supplied to countries in. All-in-one solar street lights are the new generation set of solar street lights. Two-in-one Solar Street Light; It is made with a solar panel bracket design, and cannot carry a solar panel power The Eswatini Energy Regulatory Authority (Esera) has published the results of a tender for the. The Eswatini Energy Regulatory Authority (ESERA) is searching for private minigrid developers to design, construct, operate and maintain a minigrid system that will electrify a remote community in.



Swaziland s photovoltaic base station



[Sigcineni Solar: An off-grid solar and battery solution in Eswatini](#)

It has evolved to supply power to 22 dispersed rural households via its reticulation network. The project also uses smart metering infrastructure to remotely monitor the plant and ...

[Generation -- Electricity , Eswatini Electricity Company \(EEC\) -- ...](#)

Eswatini Electricity Company's internal generation is a mix of both hydro and solar PV. The company holds four major hydro power station. The company currently has one solar plant, Lavumisa 10MW ...



System solar project Eswatini

Edwaleni Solar Power Station, is a 100 megawatts solar power plant under construction in Eswatini. The solar farm is under development by Frazium Energy, a subsidiary of the Frazer Solar Group, an ...

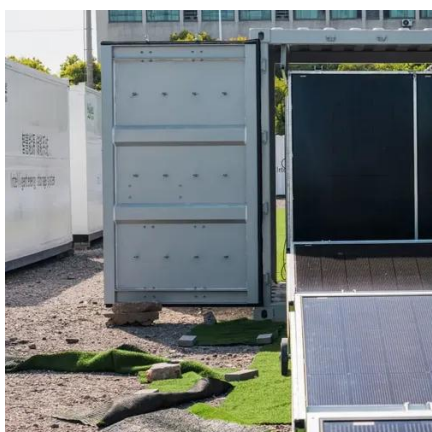
Eswatini storing solar energy in batteries

Phase 1 of the development involves solar PV coupled with battery storage to provide 200 MWH of dispatchable baseload electricity per day. Electricity will be supplied to countries in the SADC region.



Swaziland Power Plants

List of power plants in Swaziland from OpenStreetMap



[Eswatini battery energy storage system companies in](#)

Australian renewable energy independent power producer, Frazium Energy, has signed an agreement with the government of Eswatini (formerly known as Swaziland) for the development of a 100 MW ...



[Power plant profile: Lavumisa Solar PV Park, Eswatini](#)

Lavumisa Solar PV Park is a 10MW solar PV power project. It is located in Shiselweni, Eswatini. According to GlobalData, who tracks and profiles over 170,000 power plants worldwide, the ...



Solar battery cage Eswatini



Edwaleni Solar Power Station, is a 100 megawatts solar power plant under construction in Eswatini. The solar farm is under development by Frazium Energy, a subsidiary of the Frazer Solar Group, an ...



Edwaleni Solar Power Station

The power station is located in the town of Matsapha, in Manzini Region, in central Eswatini. The solar farm sits adjacent to the government-owned 15 megawatt Edwaleni Hydroelectric Power Station.

Eswatini imperium solar

Edwaleni Solar Power Station, is a 100 megawatts solar power plant under construction in Eswatini. The solar farm is under development by Frazium Energy, a subsidiary of the Frazer Solar Group, an ...





Contact Us

For catalog requests, pricing, or partnerships, please visit:

<https://www.firmaskrzypek.pl>

Phone: +48 22 426 71 90

Email: info@firmaskrzypek.pl

Scan the QR code to access our WhatsApp.

