



# Terminal and base station communication content





## Overview

---

Equipped with an electromagnetic wave antenna, often placed on a tall mast, the base station enables communication between mobile terminals (such as mobile phones or pagers) and the fixed part of the digital telecommunications network. The present-day tele-space is incomplete without the base stations as these constitute an important part of the modern-day scheme of wireless communications. They are referred to as cell towers or cellular antennas. These types of objects are an inevitability since they serve the purpose of. This document is a compilation of documents developed in the Base Station Working Group. As they represent a. A terminal includes: a receiving unit which receives system information including information on a resource and/or a period for a tracking reference signal (TRS); and a control unit which controls reception of downlink control information including indication information about availability of the. A base station connects your phone to the network. They transmit. Base stations are the foundational elements that make this connectivity possible, acting as fixed points that bridge the gap between a mobile device's radio signal and the global wired network.



## Terminal and base station communication content

---



### [The Base Station in Wireless Communications: The Key to Modern](#)

In the early 1980s, the first analog networks, such as NMT and AMPS, made it possible to make phone calls while on the move. In the 1990s, GSM technology was introduced, which ...

### Base Station System Structure

It describes the structure of base station systems with a convergent top-down and bottom-up framework. The BSWG has now moved beyond detailed consideration of these specific contributions.



### [Understanding Base Stations in Mobile Communication](#)

In this article, we explore several key elements of base stations, such as their definitions, historical background, and present-day functionality. By delving into the operational mechanics, readers can ...



### What is a Base Station in Telecommunications?

Discover the role and functionality of a base station in telecommunications networks. Learn how these critical components manage communication between mobile devices and the network, ensuring ...



## Base Stations

Backhaul Connection: The backhaul connection links the base station to the core network in the mobile communication system. It provides for the interchange of data between the base station ...



### Terminal, base station, and wireless communication method

This disclosure is accomplished in view of such circumstances, and one object of this disclosure is to provide a terminal, a base station, and a wireless communication method each of which



### What Is a Base Station? Definition and How It Works

Define the central communication hubs of modern wireless technology. Learn how base stations manage capacity and ensure reliable connections.



2MW / 5MWh  
Customizable

## What Is A Base Station?



In summary, the base station is the active component responsible for network communication, while the tower is the physical structure that supports the base station.



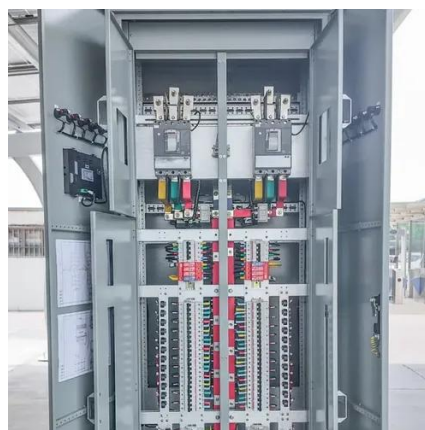
## Base Stations and Cell Towers: The Pillars of Mobile Connectivity

Base stations and cell towers are critical components of cellular communication systems, serving as the infrastructure that supports seamless mobile connectivity.



## **What are Base Station in Telecommunications?**

A base station connects your phone to the network. It acts as a hub between mobile devices and the core system.





## Contact Us

---

For catalog requests, pricing, or partnerships, please visit:

<https://www.firmaskrzypek.pl>

Phone: +48 22 426 71 90

Email: [info@firmaskrzypek.pl](mailto:info@firmaskrzypek.pl)

Scan the QR code to access our WhatsApp.

