



# The angle of installing photovoltaic panels





## The angle of installing photovoltaic panels

ESS



### [Best Angle And Orientation For Solar Panels - Forbes Home](#)

Fixed-panel installations either prioritize a particular season if energy needs vary greatly or compromise, aiming for an angle that performs ...

### [Best Angle And Orientation For Solar Panels - Forbes Home](#)

Solar panel angle is simply the vertical tilt of your solar panels. It can be a little more tricky to understand since the proper tilt will vary with geographic location and time of year. In



### **Solar Angle Secret: Are Your Panels Tilted Right?**

Fixed-panel installations either prioritize a particular season if energy needs vary greatly or compromise, aiming for an angle that performs pretty well across all seasons. Every day, the sun ...

### [What's the Best Angle for Solar Panels to Get Maximum Output?](#)

Across the continental U.S., the optimal tilt can range from 30-45 degrees. However, the further north you live, the more orientation can affect solar panel efficiency. For example, ...

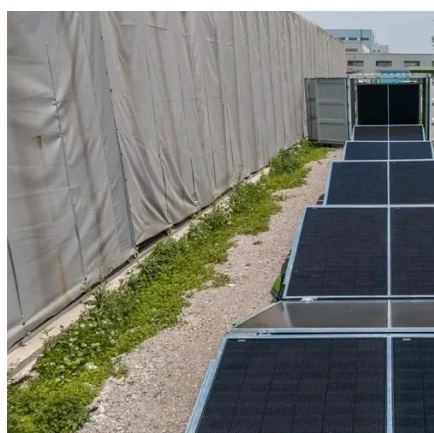


### [Best Angle for Solar Panel Installation: Complete Guide ...](#)

Discover the best angle for solar panels in 2025. Learn tilt, direction, and tips to boost efficiency using solar panel angle calculators.

### [The Best Angle For Solar Panels: How To Boost Efficiency](#)

Panels should typically be angled equal to the latitude of the installation site to maximize sunlight exposure. This positioning allows the panels to capture the maximum amount of solar ...



### [What is the Best Angle for Solar Panels? Maximizing ...](#)

The best angle for solar panels is typically equal to the latitude of your location. Click here to learn how to maximize solar panel efficiency.

### [Solar Panel Best Angle , Tilt & Orientation](#)



## [Guide 2025](#)

Find the best solar panel angle for your location. Learn tilt formulas, seasonal adjustments, and tips to maximize energy efficiency in 2025.



## **The Best Angle for Solar Panel Installation**

To achieve that goal, most solar panels face the equator and are installed at an angle between 30 to 45 degrees relative to the horizon. For homes in the northern hemisphere, solar ...

## [Solar Panel Direction & Orientation: 2025 Complete Guide](#)

Tilt angle describes the vertical angle of your panels relative to the ground, measured in degrees from horizontal. Both factors work together to determine how much sunlight your panels ...



## [Optimal Solar Panel Angle: Maximizing Efficiency and Energy Output](#)

South-facing solar panels typically yield the highest energy production, while east-west facing roofs can still be effective. The direction of your solar panels is generally more important than ...



## Contact Us

---

For catalog requests, pricing, or partnerships, please visit:

<https://www.firmaskrzypek.pl>

Phone: +48 22 426 71 90

Email: [info@firmaskrzypek.pl](mailto:info@firmaskrzypek.pl)

Scan the QR code to access our WhatsApp.

