



The base station cannot switch to battery power

Support Customized Product





Overview

Reboot the robot and the base station. To reboot the base station: Unplug the power cord from the wall outlet, wait for 15 seconds, and then plug it back into the outlet. You'll also need your own Phillips head screwdriver to access the Base Station's battery. Customer: My astro a50 x base station is not turning on or showing any sign of power Technician's Assistant: I'm sorry to hear about the issue with your Astro A50 X base station.

----- Disclaimer: The content shared on this channel is for educational and. The hub typically routes energy from the grid to your home, except during outages. The switch is what ensures the battery's energy is used for only your home, essentially. If your Astro A50 won't turn on, the battery may be dead. You should be able to get it running again with a hard reset.



The base station cannot switch to battery power

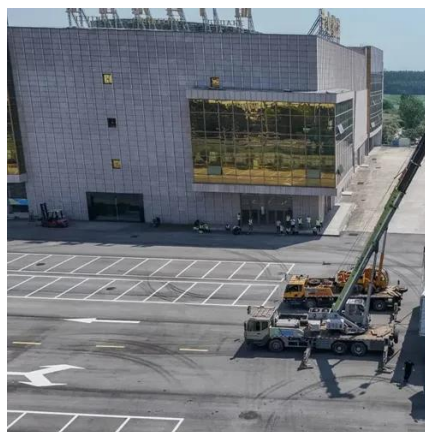


Base station will not power on (RF)

Base station will not power on. The cause for this is either: Check charge level of the battery. or. Check that batteries are properly attached and attach, insert or reinsert the batteries.

[How to Reset the Base Station . SimpliSafe Support Home](#)

When troubleshooting your system, there may come a time when you need to reset your Base Station to clear out any errors. You'll need to be able to access the bottom of the Base Station to complete ...



Fix: ASTRO A50 Not Charging On Base

Here's the quick fix: If your ASTRO A50 is not charging on the base station, disable the sleep mode, switch the station to "PC" mode, and thoroughly clean the charging pins. Also, you may ...

How To Fix Astro A50 Won't Turn On? 4 Ultimate ...

If your Astro A50 wont turn on, this guide has got you covered. It runs through some easy fixes like checking its battery and restarting it. Keep reading for more.



[How the Base battery works: A complete guide to grid connectivity and](#)

This guide covers everything you need to know about how your Base battery operates, protects your home, and supports the power grid. You'll also find answers to common battery myths and top tips to ...

[Why does my DECT handset say that the base unit has no power?](#)

Below are the most common causes and steps you can try. 1. Check the base unit's power connection. Make sure the AC adaptor supplied with your model is securely plugged into both the base unit and a ...

ESS



[The base station solar container battery cannot be turned on is it ...](#)

Now it seems that the problem only occurs with one of the base stations, possibly just an anomaly but seems currently to persist with one unit and not the other regardless of location.

[How To Fix ASTRO A50 Base Station Not](#)



[Powering On , Complete ...](#)

Discover effective solutions to fix your ASTRO A50 Base Station not powering on. Follow our complete guide for troubleshooting and restoring functionality.



[My astro a50 x base station is not turning on or showing any sign of](#)

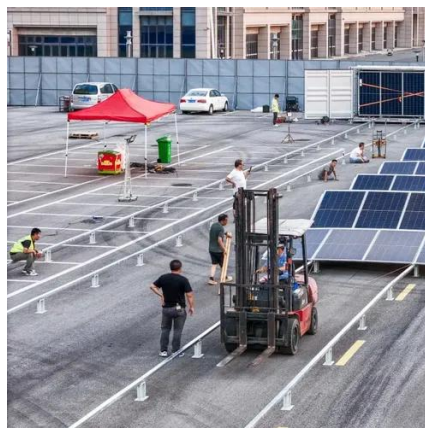
Hello, I'm Adam, a Consumer Electronics expert on JustAnswer. I'm here to help you troubleshoot the issue with your Astro A50 X base station and find a solution together. Let's work together to get it up

...

eufy Support , Troubleshooting & Customer Service

To reboot the robot: Switch off the power, wait 15 seconds, and then switch the power back on. To reboot the base station: Unplug the power cord from the wall outlet, wait for 15 seconds, and then

...





Contact Us

For catalog requests, pricing, or partnerships, please visit:

<https://www.firmaskrzypek.pl>

Phone: +48 22 426 71 90

Email: info@firmaskrzypek.pl

Scan the QR code to access our WhatsApp.

