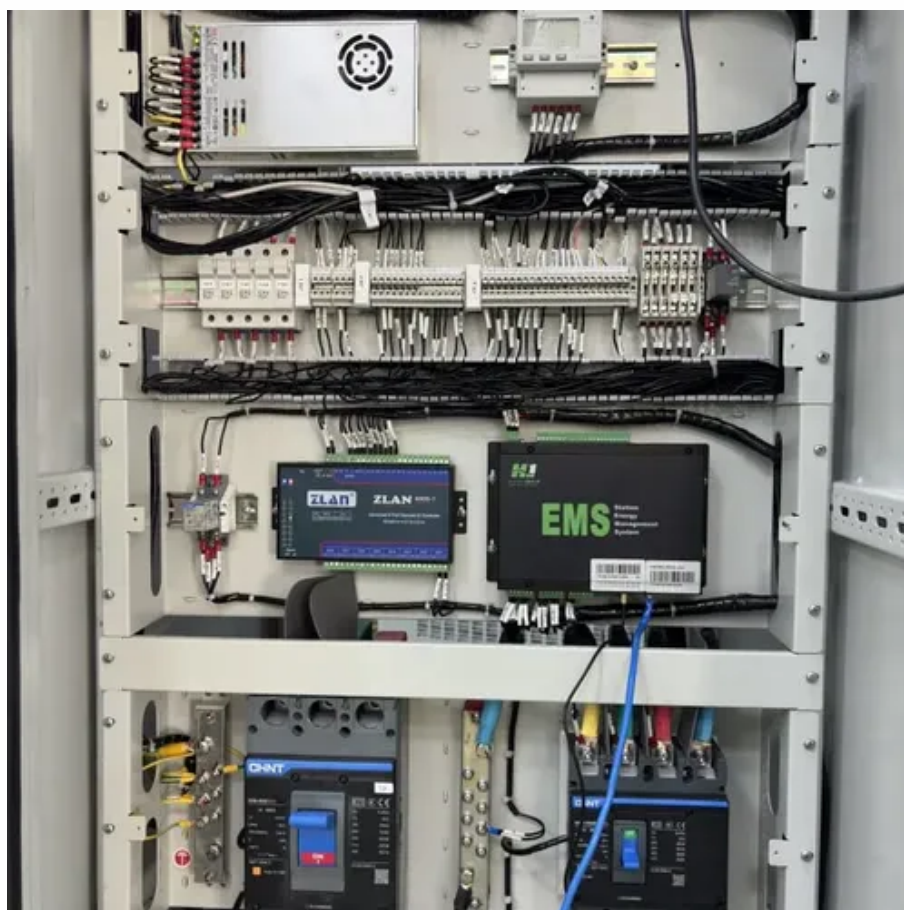




The energy storage switch indicator light of the electric cabinet is not on





Overview

Check if the illuminator key switch is stuck. If the energy storage power supply lighting does not light up, this could be due to a faulty lighting switch, damaged lighting, or a faulty lighting power supply circuit. If your power supply has the following problems, please follow the steps in this article to troubleshoot and solve the lighting. Picture this: You're doing your routine check of the electrical room when you notice the high voltage cabinet energy storage light isn't illuminating. The switch has 120v to it so the 12v supply is after the switch I assume. Let's. It isn't likely that your SmartAC device is causing a problem, but we want to be certain. When unused, SmartAC devices sit idle and don't interact. The ESS has LED status indicators on the ESS. Every LED color and sequence on your ESS cabinet has its own specific meaning. The different colors are as follows: Cycling Colors-Green, Orange and Red, please wait no action.



The energy storage switch indicator light of the electric cabinet is not



[How to solve the problem that the energy storage power supply ...](#)

Check if the illuminator key switch is stuck. A normal key can be pressed flexibly and is not stuck. Press the power display switch to confirm that the stored energy power supply is fully charged. Running out ...

The energy storage indicator light is off

Check whether the charging socket, charger, and charging port of the storage power supply are well connected, and the charger indicator light is on normally when the charger is well



Switch Light Indicator Guide

They do not automatically mean that PG& E will need to activate your SmartAC device- they can actually help us avoid that. The SmartAC system is activated only in anticipation of a local or state energy ...

[The energy storage switch indicator light of the electric cabinet is ...](#)

If the energy storage power supply lighting does not light up, this could be due to a faulty lighting switch, damaged lighting, or a faulty lighting power supply circuit.



Cannot find power source for under cabinet lights.

Cannot find power source for under cabinet lights. This house was built in 2020, we have under cabinet lights that the builder put in but they don't work. I know they did work in the past. The switch has 120v ...

[High Voltage Switch Cabinet Energy Storage Light: What It Means ...](#)

What's it trying to tell you? Well, this warning signal isn't just some random alert. It's actually your electrical system's way of saying, "Hey, we've got some stored energy here that needs attention!" ...



[The high voltage cabinet energy storage light is not on](#)

In case of energy storage failure of high-voltage switch cabinet, the high-voltage light opening cabinet cannot be closed, the power supply is not normally distributed, and the factory machine



[What do the different colors of LED lights](#)



[on the PWRcell 2 Battery](#)

What do the different colors of LED lights on the PWRcell 2 Battery Cabinet mean? This article applies to the PWRcell 2 line of products. The ESS has LED status indicators on the ESS. This article will ...



[Is Your High Voltage Cabinet Energy Storage Light Off? Here's Why ...](#)

Picture this: You're doing your routine check of the electrical room when you notice the high voltage cabinet energy storage light isn't illuminating. Your inner voice asks: "Is this a 'call-the-team-now' ...

[Energy Storage Cabinet Switch Sequence: A Step-by-Step Guide with](#)

This guide is your backstage pass to understanding energy storage cabinet switch sequence pictures - crucial for engineers, facility managers, and renewable energy enthusiasts ...





Contact Us

For catalog requests, pricing, or partnerships, please visit:

<https://www.firmaskrzypek.pl>

Phone: +48 22 426 71 90

Email: info@firmaskrzypek.pl

Scan the QR code to access our WhatsApp.

