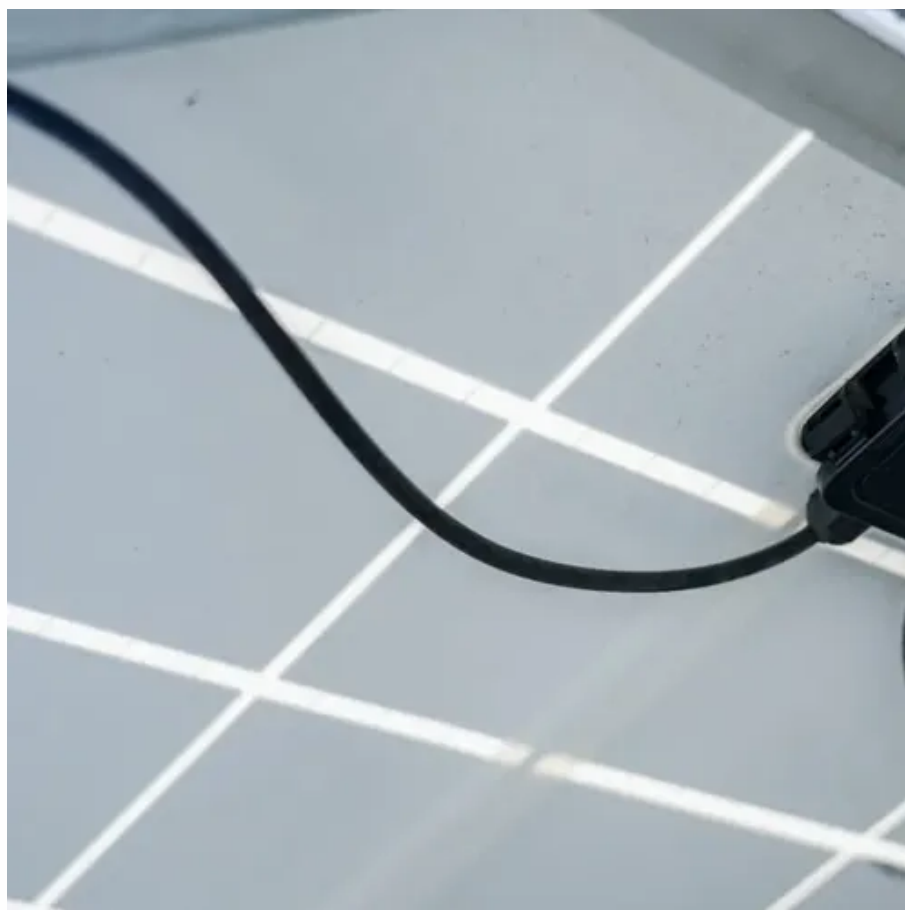




The photovoltaic panel is 1 13 meters wide





Overview

Solar panel size refers to the power output (typically ranging between 450W and 600W per panel for commercial-grade modules) while solar panel dimensions refer to the physical height and width—usually around 2.1m for a standard 72-cell or 144 half-cut cell module. A 60-cell panel (often seen on home rooftops) is roughly 1.7 meters tall and 1 meter wide, and its power output ranges from about 250 W to 400 W depending on the technology. The panel is 20% efficient: 1,600 divided by 20% equals 320.5 multiply by 1,000: Per day, $1,440 \times 1,000 = 1.44$ kWh of electricity produced. The quantity of solar hours. The physical dimensions of solar panels determine how many can fit on your available rooftop or ground area, while the wattage tells you how much power each panel can generate. Choosing the right balance between panel size & output ensures your solar system meets your energy needs cost-effectively. 78 m in length and weigh 20–24 kg. Their flexibility makes them effective in layouts involving skylights, chimneys or other obstructions. 550W (540–560W): Common in commercial and industrial (C&I) projects. How much solar energy do you get in your area?

That is determined by average peak solar hours.



The photovoltaic panel is 1.13 meters wide



SANSA-PV-BOQ_Rev A

Note: All material shall be IEC and/or SABS compliant. 1.1 Photovoltaic Modules Supply and install photovoltaic modules as detailed and specified below, and in accordance with standard quality ...

Solar Panel Sizes, Dimensions & Wattage for Businesses , GSE

Find the ideal solar panel size and wattage for your business--maximize efficiency and space with our easy size guide.



How To Calculate Solar Panel Output? - Glyde Solar

Introduction
What Is Solar Panel Output
How to Measure Solar Panel Output
Solar Panel Output Per Day
Example
Solar Panel Output Per Month
Solar Panel Output Per M2 (Square Meter)
Factors Affecting The Solar Panel Output
Solar Panel Efficiency
Solar Panel Size
Solar panels can be divided into two types based on their output: 60-cell solar panels and 72-cell solar panels. 60-cell solar panels' physical size is normally 5.4 feet tall by 3.25 feet wide, with a power output of 270 to 300 watts in conventional test settings, depending on the efficiency of the cells in them. Ordinary 60-cell panels had a power See more on glydesolar
Images of The Photovoltaic Panel Is 1.13 Meters Wide
Large Scale Solar Panels
Biggest Solar Panel Size
Dimension Large Solar Panels
How Big Are Solar Panels
Big Solar Panels Size
How Big Is One Solar Panel
Size Of Photovoltaic Panels
How



Big Is A Solar Panel Largest Solar Panel See
allgserenewables

Solar Panel Sizes, Dimensions & Wattage for Businesses , GSE

See More

Find the ideal solar panel size and wattage for your business--maximize efficiency and space with our easy size guide.

How to Design Solar PV System

To find out the sizing of PV module, the total peak watt produced needs. The peak watt (Wp) produced depends on size of the PV module and climate of site location. We have to consider panel generation ...

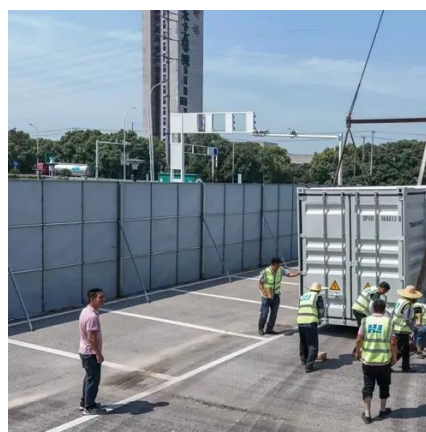


SUBJECT: SOLAR PANEL INSTALLATION

1.2. Use and handling procedure of solar panels
Solar panels use sunlight to generate electricity through the photovoltaic effect. The panels are typically installed in arrays, with each panel consisting of solar ...

[A Guide on Calculating Area Required for Solar Panel Installation](#)

The results of the calculation of your solar panels may change because panels are installed at an angle to the surface of the earth. This is the way to calculate the area required to ...





[Solar Panel Size Guide , Best Panel Size for Your Roof](#)

Solar cells are assembled in grids, and the most common configurations are 60-cell panels for residential use and 72-cell panels for commercial or utility use. A 60-cell panel (often seen on ...



TI Reference Designs Library

Quick search help Search the reference design database with any combination of keyword, market, and power reference design parameter. Keyword and market searches will return results from all ...



How To Calculate Solar Panel Output? - Glyde Solar

The amount of electricity that the solar panel produces under perfect conditions (known as peak sun), also known as "rated capacity" or 'rated output,' is 1,000 watts (or 1 kW) of sunshine per square ...

[Solar Panel kWh Calculator: kWh Production Per Day, Month, Year](#)

Based on this solar panel output equation, we will explain how you can calculate how many kWh per day your solar panel will generate. We will also calculate how many kWh per year do solar panels ...



[Solar Panel Dimensions: Specifications.](#)



Power Classes, Roof Area

Analysis of solar panel dimensions and power classes, with reference sizes for 430W/550W/600W modules and corresponding roof area calculations to help select the most ...





Contact Us

For catalog requests, pricing, or partnerships, please visit:

<https://www.firmaskrzypek.pl>

Phone: +48 22 426 71 90

Email: info@firmaskrzypek.pl

Scan the QR code to access our WhatsApp.

