



The photovoltaic panels that were not used up at the construction site



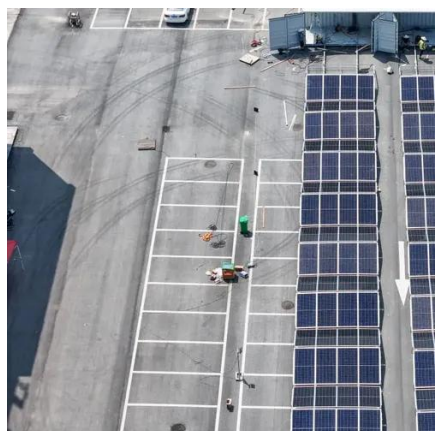


Overview

An opportunity for PV is the use of brownfield sites, i., land that was previously used for industrial or commercial purposes and is currently abandoned, unused, otherwise degraded, or potentially contaminated. The purpose of the solar farm is to generate and sell electricity, therefore it is key that the. Points are adjusted according to square footage. Solar parks are one of the least intrusive of all the options to reclaim a former landfill site, both aesthetically, acoustically and. Driven by subsidies, mandates and federal and state policies compelling the use of more renewable energy, solar energy facilities are now displacing farmland at an increasing rate. Environmental Protection Agency (EPA) to assist builders in designing and constructing homes equipped with a set of features that make the installation of solar energy systems after the completion of the home's. Photovoltaic (PV) technology is an ideal solution for the electrical supply issues that trouble the current climate-change, carbon-intensive world of power generation.



The photovoltaic panels that were not used up at the construction site



[Environmental impacts of solar photovoltaic systems: A critical review](#)

The results revealed that the negative environmental impacts of PV systems could be substantially mitigated using optimized design, development of novel materials, minimize the use of ...

[LEED Green Associate \(GA\) Version 4 Practice Exam 1 Flashcards](#)

Study with Quizlet and memorize flashcards containing terms like Homes size adjustment factor, Which strategy is not addressed by the materials and resources credit category, _____ evaluates all the ...



Solar Photovoltaic Systems

The PV system requirements and exceptions are based on the system being installed on the roof of the building. However, the system can be ground-mounted or installed on other structures on the lot.

[Solar Photovoltaic: SPECIFICATION, CHECKLIST AND GUIDE](#)

These specifications were created with certain assumptions about the house and the proposed solar energy system. They are designed for builders constructing single family homes with pitched roofs, ...



Solar panel

Solar panels use a renewable and clean source of energy, and reduce greenhouse gas emissions compared to hydrocarbon sourced energy. However, they depend on the availability and intensity of ...

Modular design,
unlimited combinations in parallel
BUILT-IN DUAL FIRE PROTECTION MODULE



[Solar Photovoltaic: SPECIFICATION, CHECKLIST AND GUIDE](#)

About the Renewable Energy Ready Home Specifications Assumptions of the RERH Solar Photovoltaic Specification Builder and Specification Limitations

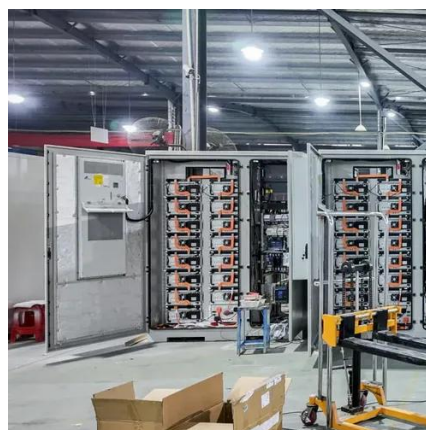
- 1.5 Document the solar resource potential at the designated array location
- 3.3 Install a conduit for the AC wire run from the designated inverter location to the electric service panel
- 4.2 Record the name and Web address of the electric utility service provider

5.1 Landscape Plan

5.2 Placement of non-array roof penetrations and structural building elements

Appendix A: RERH Labeling Guidance

The Renewable Energy Ready Home (RERH) specifications were developed by the U.S. Environmental Protection Agency (EPA) to assist builders in designing and constructing homes equipped with a set of features that make the installation of solar energy systems after the completion of the home's construction easier and less expensive. The specifications See more on - Whole Building Design Guide

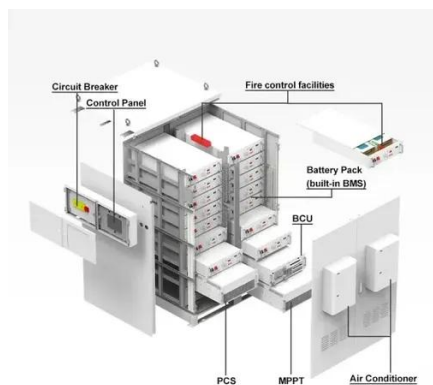


Building Integrated



Photovoltaics (BIPV) , WBDG

For building installations, PV systems fall into two categories, building applied photovoltaics (BAPV) and building integrated photovoltaics (BIPV). BAPV is the ...



Solar energy and the environment

The hazardous chemicals used for manufacturing photovoltaic (PV) cells and panels must be carefully handled to avoid releasing them into the environment. Some types of PV cell technologies use heavy ...

Construction of photovoltaics on unused areas

The installation of photovoltaic (PV) plants on vacant land and brownfields is a great opportunity to use abandoned or other unused land for solar energy production.



Building Integrated Photovoltaics (BIPV) , WBDG

For building installations, PV systems fall into two categories, building applied photovoltaics (BAPV) and building integrated photovoltaics (BIPV). BAPV is the more common type of installation, with the ...

Solar Power Depletes Farmlands of Rich Soil

According to the U.S. Environmental Protection Agency and the Justice Department, common solar



farm construction practices, including clearing and grading large sections of land, can ...



Conservation Considerations for Solar Farms

Ground-based, utility-scale solar panel installations used for electricity generation of 1 MW or greater are commonly referred to as 'solar farms' (US Energy Information Administration, 2020).



Contact Us

For catalog requests, pricing, or partnerships, please visit:

<https://www.firmaskrzypek.pl>

Phone: +48 22 426 71 90

Email: info@firmaskrzypek.pl

Scan the QR code to access our WhatsApp.

