



The reason why photovoltaic panels cannot be laid flat





Overview

When solar panels are installed on a flat surface, they are not angled towards the sun, which can decrease their efficiency. The angle at which solar panels are mounted can significantly influence how much sunlight they capture, thereby impacting overall energy production. This guide explores the. Solar cells do not lie flat primarily due to architectural and functional requirements involved in solar energy capture and efficiency. Slight angling allows for optimal energy absorption, 3.



The reason why photovoltaic panels cannot be laid flat



can solar panels be laid flat on roof

Flat solar panels can offer a number of advantages when installed on a roof. They are often easier to install than traditional rooftop photovoltaic systems, and they blend in more ...

Can Solar Panels Work if Laid Flat?-News

As solar energy technology continues to improve, the ability to harness sunlight efficiently through flat installations is becoming more viable. Innovations in materials, design, and monitoring ...



Why don't solar cells lie flat?

Mathematically, the efficiency of solar panels increases by approximately 20% to 50% with an optimal angle as compared to a flat position. By optimizing the angle, not only is electricity ...

Can Solar Panels Be Laid Flat?

Solar panel tilt is a critical factor that directly affects the efficiency and energy output of a solar power system. The angle at which solar panels are mounted can significantly influence how ...



Can Solar Panels Be Laid Flat

When solar panels are installed on a flat surface, they are not angled towards the sun, which can decrease their efficiency. The angle of the solar panel affects the amount of sunlight it receives, and ...



Can Solar Panels be Laid Flat on the Roof? (or Angled?)

Solar panels should not be flat because they can collect water, which will build up on the surface and damage the solar cells. So, it is much better to angle them; not too much - as little as three to four ...

ESS



Can Solar Panels be Laid Flat on the Roof? (or Angled?)

As solar energy technology continues to improve, the ability to harness sunlight efficiently through flat installations is becoming more viable. Innovations in materials, design, and monitoring ...



Optimizing Solar Panels on a Flat Roof:



Finding the Best Tilt Angle for

Solar panels generate the most electricity when sunlight hits them perpendicularly. Laying them flat means the angle of incidence is often suboptimal, especially during morning and evening ...

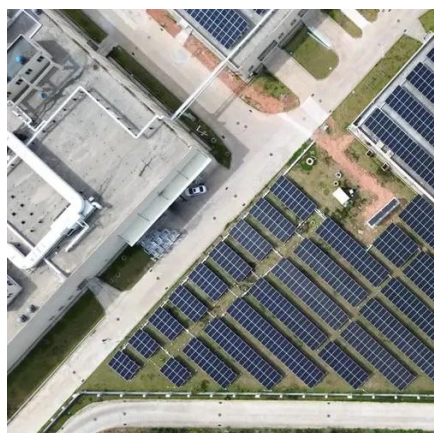
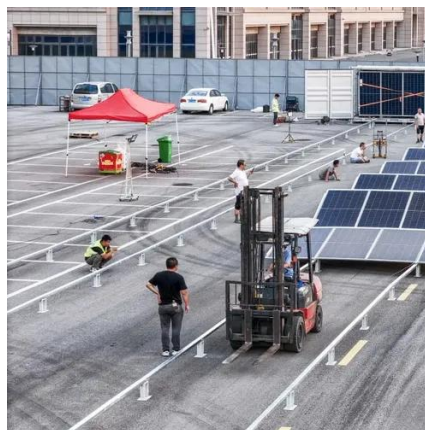


Exploring Why Are Solar Panels Flat: Myths and Realities

Learn why solar panels are flat, debunk common myths, explore downsides, and find answers to FAQs about their design and efficiency.

The reason why photovoltaic panels cannot be laid flat

Yes, you can install solar panels flat, but they will experience a degree of energy loss without the slightest inclination toward the sunlight. Although it certainly is advantageous to have a roof that is ...



Installing Solar Panels Completely Flat

There are advantages and disadvantages to installing solar panels completely parallel to a flat roof vs tilting them up. But the cons outweigh the pros, therefore our best advice for most ...



Contact Us

For catalog requests, pricing, or partnerships, please visit:

<https://www.firmaskrzypek.pl>

Phone: +48 22 426 71 90

Email: info@firmaskrzypek.pl

Scan the QR code to access our WhatsApp.

