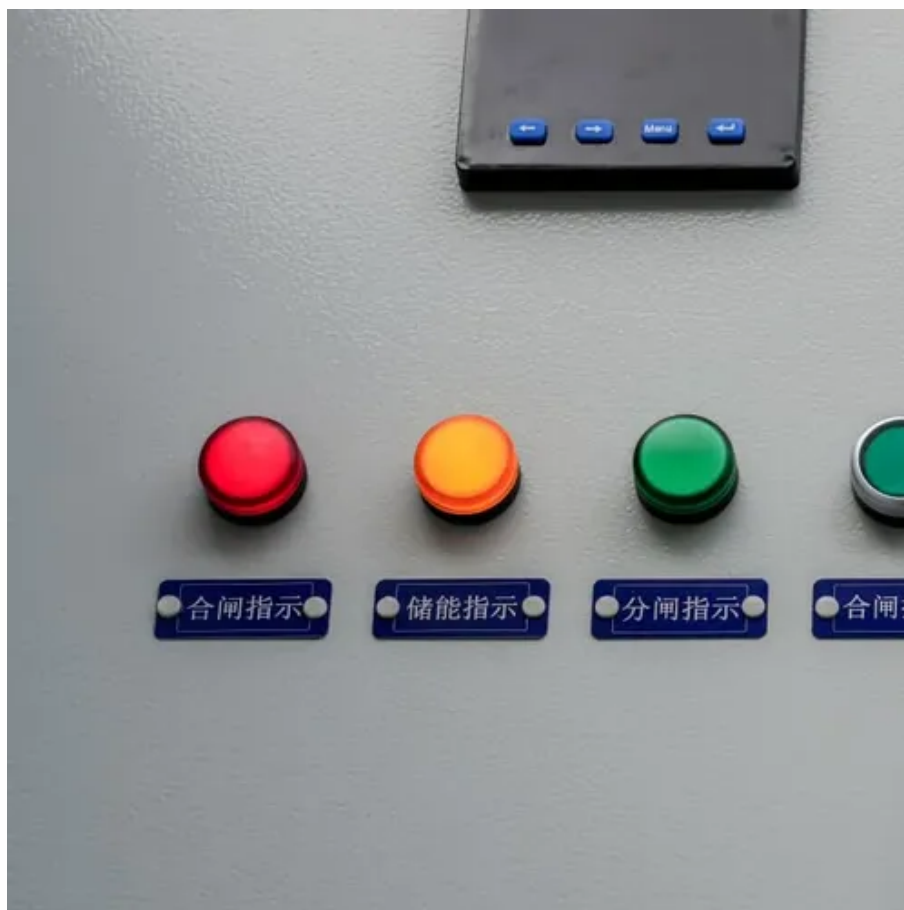




The role of photovoltaic panel test light source





Overview

These devices are essential for anyone who installs, maintains, or troubleshoots solar systems. They help you measure open-circuit voltage (Voc), short-circuit current (Isc), and power output under real-world sunlight conditions. The electroluminescence solar module tester is a key tool for manufacturers to check and improve solar panel performance. This testing is very. A solar panel tester is a specialized instrument for assessing the performance and health of photovoltaic (PV) modules.



The role of photovoltaic panel test light source

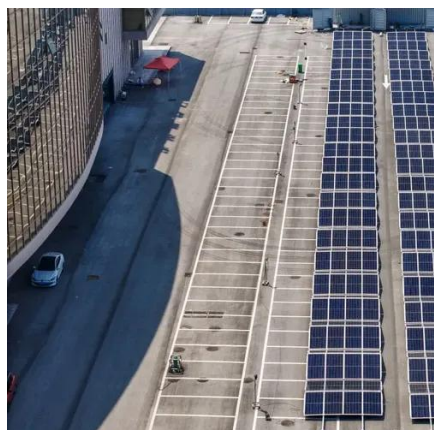


What is the EL test for solar panels?

Electroluminescence testing has become an indispensable tool for ensuring solar panel quality and performance. By revealing hidden defects and material inconsistencies, EL imaging helps maintain ...

[What light source is used to test photovoltaic panels](#)

This paper reviews the solar simulator light sources for testing photovoltaic panels as well as for thermal applications. Light intensity, cost, durability and stability were included as a criterion for comparing ...

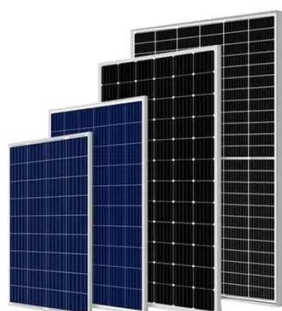


[Light sources of solar simulators for photovoltaic devices: A review](#)

The most important components of solar simulators used in photovoltaic panel tests are light sources. In this study, solar simulators were classified based on the light sources they use, and ...

[What is the light intensity of solar panel test? , NenPower](#)

The measurement of light intensity during solar panel tests typically employs a unit known as watts per square meter (W/m^2). This quantifies the solar power received per area on the ...



[Solar Panel Testers Explained: What They Do and Which Ones Are ...](#)

Test your panels under bright sunlight and measure open-circuit voltage (V_{oc}) with no load connected. Be cautious when measuring short-circuit current (I_{sc}) - use proper insulation and ...

A Complete Guide to EL Inspection for Solar Panels

This non-destructive testing method utilizes the principle of electroluminescence. When solar cells have electric current flowing through them in one direction (called a forward bias), they ...



[Solar Cell Performance Measurements Under Artificial Lighting ...](#)

In this work, we take the first steps in demonstrating that a reference solar cell can indeed be calibrated under a well-defined low-light spectrum and can be used to perform current vs. voltage ...



[Impact of Light Source Spectrum in](#)



Laboratory Test of Commercially

The output power measured during photovoltaic modules exposure to the artificial electric lighting sources significantly differs from the values that could be o



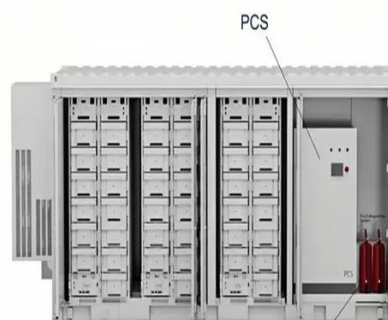
Solar Panel Testing: Ensuring Efficiency, Durability, and Safety

Solar panel testing is critical to ensure optimal performance, longevity, and safety of photovoltaic (PV) systems. This article explores the various tests involved in solar panel testing, their ...



Inspection techniques in photovoltaic power plants: A review of

Indoor measurements use an artificial light source, while outdoor measurements harness natural sunlight. However, it's important to note that outdoor measurements are often conducted ...



Fire Extinguishing System



Contact Us

For catalog requests, pricing, or partnerships, please visit:

<https://www.firmaskrzypek.pl>

Phone: +48 22 426 71 90

Email: info@firmaskrzypek.pl

Scan the QR code to access our WhatsApp.

