



The voltage output of the inverter is 320v





Overview

So, the output voltage of the inverter will be 90 volts. Understanding and calculating inverter voltage is crucial for ensuring the. In this video (Part-2), I will show you how to convert 320V DC into 220V AC Modified Sine W. This is the continuation of Part-1, where we made the 12V DC to. The power of the battery is 360W (12V x 30A= 360W).



The voltage output of the inverter is 320v



[How to Calculate the Maximum Output Power of a Power Inverter](#)

Taking the output voltage and dividing it by the input voltage, we get 18.33 (220V/12V). Therefore, current will be decreased by a factor of 18.33. Since the current capacity of the battery is rated for ...

[Inverter Voltage Calculator, Formula, Inverter Voltage Calculation](#)

The output voltage of an inverter is determined by the DC input voltage and the modulation index. The modulation index represents the ratio of the inverter's AC output voltage to its maximum possible AC ...



[2000 Watts 320V DC to 220V AC Inverter ~9 Amps Output.](#)

2000 Watts 320V DC to 220V AC Inverter ~9 Amps Output. Hello Everyone. I'm New to This Forum, I Have gone to Many of your Interesting Post Regarding Inverters and Tried to Build one ...



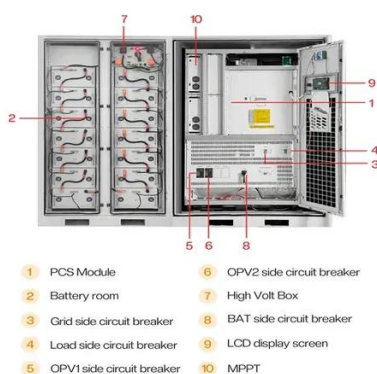
[Homemade Power Inverter Part-2 , 320V DC to 220V AC Modified ...](#)

In this video (Part-2), I will show you how to convert 320V DC into 220V AC Modified Sine Wave. This is the continuation of Part-1, where we made the 12V DC to 320V DC section.



Inverter Voltage Calculator

Calculate the output voltage of an inverter with the Inverter Voltage Calculator based on the DC bus voltage and modulation indices.



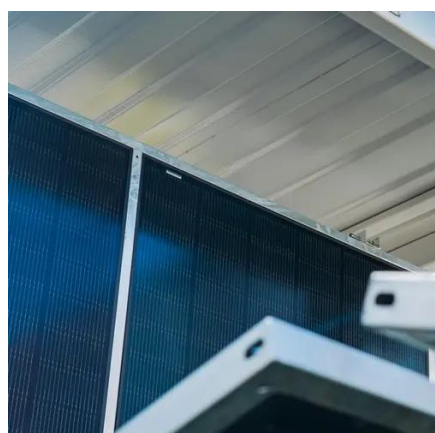
[Understanding Inverter Input and Output: What is the ...](#)

In this article, we will discuss inverter input and output and their relationships.



[Inverter Voltage Calculator & Formula Online Calculator Ultra](#)

Generally, the inverter output voltage cannot exceed the DC bus voltage in conventional inverters. However, with certain topologies and techniques like voltage boosting, it is possible to ...



inverter voltage calculator



The Inverter Voltage Calculator is a practical tool that simplifies the process of determining the output voltage of an inverter based on the input voltage and duty cycle.



inverter output voltage calculation

The output voltage of an inverter is determined by the input voltage and the turns ratio of the transformer used in the inverter. The turns ratio is the ratio of the number of turns in the primary ...

Inverter Voltage Calculator

What is the Inverter Voltage Equation? The inverter voltage equation calculates the output voltage of an inverter based on the input voltage and the transformation ratio.





Contact Us

For catalog requests, pricing, or partnerships, please visit:

<https://www.firmaskrzypek.pl>

Phone: +48 22 426 71 90

Email: info@firmaskrzypek.pl

Scan the QR code to access our WhatsApp.

