



The wind turbine blades stopped turning



- ✓ 100KWH/215KWH
- ✓ LIQUID/AIR COOLING
- ✓ IP54/IP55
- ✓ BATTERY 6000 CYCLES





Overview

Wind turbines stop turning for two reasons. First, the mechanical aspect of the wind turbine needs maintenance. The turbines start producing electricity when wind speeds reach 5-7 mph and automatically shut down at speeds above 55 mph to avoid damage. Indiana's wind farms prove how well these operational limits work. They generate 3,500 megawatts of power, which provides electricity to more than 1 million. Wind turbines are a resourceful way to harness wind power to generate electricity, but what if the turbines aren't turning?

Wind turbines, usually installed near each other on a “wind farm,” connect to the electric power transmission network to deliver power where it's needed.



The wind turbine blades stopped turning



Why Are The Wind Turbines Not Turning?

Wind's Kinetic Energy: Wind turbines convert the kinetic energy of wind into mechanical energy, which then drives a generator to produce electricity. Blade Rotation: The wind's force causes the turbine ...

Why Do Some Wind Turbines Not Turn

Wondering why some wind turbines aren't spinning? Discover the real reasons turbines stop or appear stationary, how they work, and what's normal. Get clear answers to common turbine myths!



[Preventing Wind Turbines Stop Turning: Reliability Strategies](#)

This article will deeply analyze the various reasons why wind turbines stop turning, helping readers to fully understand the causes and countermeasures of wind turbine failures.

Why Do Some Wind Turbines Stop Turning?

So, I did some research to find out why wind turbines stop turning. Why do some wind turbines stop turning? Wind turbines can stop turning their blades due to a variety of factors including wind speeds ...



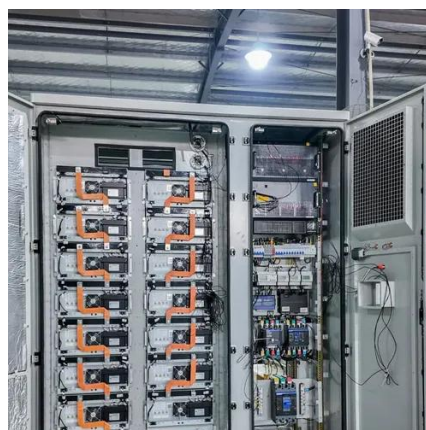
[Wind Turbines Aren't Turning \(Here's Why\) , Power Generation](#)

Wind turbines stop turning for two reasons. First, the mechanical aspect of the wind turbine needs maintenance. Second, there isn't enough wind for the wind turbine to be turning. Alternatively, there's too much wind, and ...



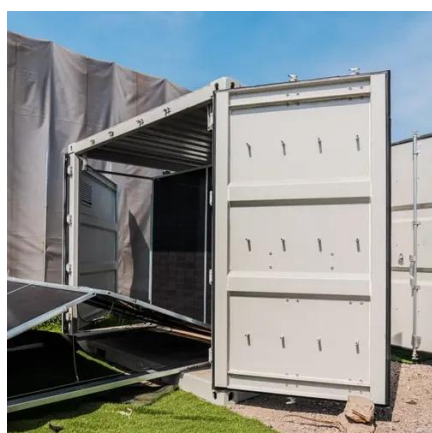
[Why do some wind turbines spin as others nearby stand still?](#)

It's possible for the blades on wind turbines to reach up to speeds of 200 mph, so it may seem odd when some are spinning very quickly while the blades on others nearby are not moving.



Why Are Some Wind Turbines Not Turning?

Wind turbine blades might cease rotating due to several circumstances, such as rapid or sluggish wind speeds and adverse weather conditions. The turbines will cease spinning if they cannot get ...



Why Do Some Wind Turbines Not



Turn?

Wind turbines need to reach a certain starting wind speed to overcome mechanical resistance and begin rotating to generate electricity. When the wind speed is below this value, the blades cannot turn, ...



Why Do Wind Turbines Stop?

Wind turbines are complex structures, designed to produce maximum renewable energy only when it is safe to do so. Let's explore why a wind turbine stops moving.

[Wind Turbines Aren't Turning \(Here's Why\) . Power Generation](#)

Wind's Kinetic Energy: Wind turbines convert the kinetic energy of wind into mechanical energy, which then drives a generator to produce electricity. Blade Rotation: The wind's force causes

...



How Come Some Wind Turbines Not Spin

Wind turbines stop turning for two main reasons: 1) the mechanical aspect of the turbine needs maintenance, and 2) there isn't enough wind for the turbine to be turning. Alternatively, there's too much ...



Contact Us

For catalog requests, pricing, or partnerships, please visit:

<https://www.firmaskrzypek.pl>

Phone: +48 22 426 71 90

Email: info@firmaskrzypek.pl

Scan the QR code to access our WhatsApp.

