

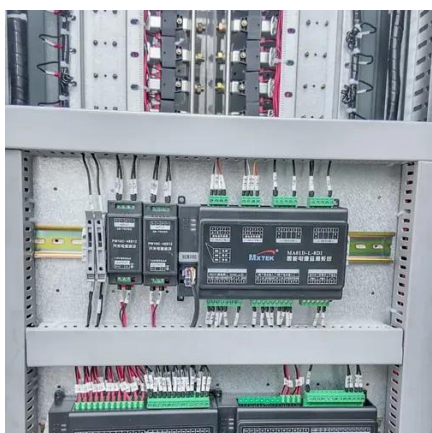


The wind turbine generator temperature is high





The wind turbine generator temperature is high



Is it dangerous if the generator wind temperature is high

Why is a generator a fire hazard? : Generators have an optimum operating temperature range. If the temperature outside the generator exceeds this range, it can cause overheating which not only causes ...

Temperature Control in Wind Turbine Systems

Temperature Control in Wind Turbine Systems
Modern wind turbines face significant thermal management challenges across their key components. Generator windings regularly operate at temperatures ...



Normal wind temperature of generator

Global wind capacity is expected to reach 1,800 GW by 2030 . The generator system in wind turbines performs the critical function of converting mechanical power (torque & speed) to electrical power (electrical ...

How Does Temperature Affect Wind Turbines?

Temperature variations significantly impact wind turbine efficiency, component health, and energy conversion in renewable energy systems. Temperature derating affects the performance of wind turbines by ...



Solar

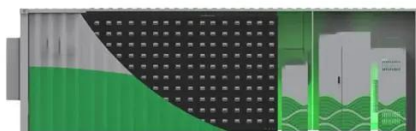


Thermal Analysis of a Wind Turbine Generator by Applying a ...

The goal is to understand the temperature behavior of the generator by using a straightforward model and no additional sensors than the ones that are already installed in the wind turbine.

Recent research advances in wind turbine thermal management

The heat transfer characteristics of the high-temperature superconducting synchronous generator were investigated using a lumped parameter network, and the temperatures inside the generator at various ...



Generator wind temperature difference range

Partially superconducting direct-drive wind turbine generators with high-temperature superconducting excitation winding enable an increase of the rated unit power,

Wind Turbine Generator Condition



Monitoring Using ...

Challenging environmental factors combined with high and turbulent winds make serious demands on wind turbines and result in significant component failure rates, highlighting the importance of maintenance. ...



Generator Wind Temperature Range: The Hidden Factor in Turbine

Generator wind temperature range directly impacts 34% of unexpected turbine shutdowns globally. Well, you might be thinking: "Isn't wind cooling enough?" Actually, recent data from the 2024 Renewable Energy ...

Effects of Wind Conditions on Wind Turbine Temperature ...

To reduce maintenance costs of wind turbines (WTs), WT health monitoring has attracted wide attention, and different methods have been proposed. However, most existing WT temperature monitoring ...





Contact Us

For catalog requests, pricing, or partnerships, please visit:

<https://www.firmaskrzypek.pl>

Phone: +48 22 426 71 90

Email: info@firmaskrzypek.pl

Scan the QR code to access our WhatsApp.

