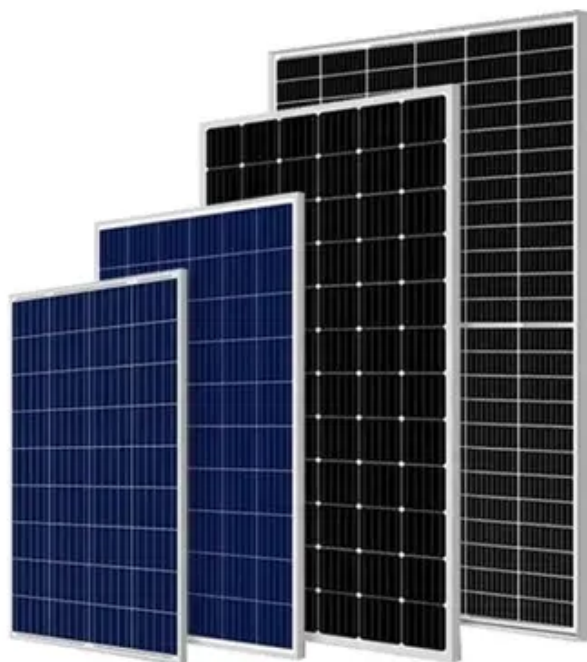




# The wind turbine system is wind





## Overview

---

Wind turbines work on a simple principle: instead of using electricity to make wind—like a fan—wind turbines use wind to make electricity. As of 2020, hundreds of thousands of large turbines, in installations known as wind farms, were generating over 650 gigawatts of power, with 60 GW added each year. They can be stand-alone, supplying just one or a very small number of homes or businesses, or they can be clustered to form part of a wind farm.



## The wind turbine system is wind



### How does a wind turbine work?

How does a wind turbine work? Wind turbines can turn the power of wind into the electricity we all use to power our homes and businesses. They can be stand-alone, supplying just one or a very small ...

### [Wind turbine: what it is, parts and working . Enel Group](#)

How does a wind turbine work? The process is quite simple. The rotor is activated by the wind. Its rotation is transmitted to an input shaft that powers an electric generator. This so-called yaw system ...



### [Wind turbine: How it works, parts, and existing types](#)

A wind turbine, also known as a wind generator, is a device that uses the power of the wind to generate electricity. When several wind turbines are grouped together in the same place, a ...

### [Wind turbine , Renewable Energy, Efficiency & Design , Britannica](#)

How does a wind turbine work? The process is quite simple. The rotor is activated by the wind. Its rotation is transmitted to an input shaft that powers an electric ...



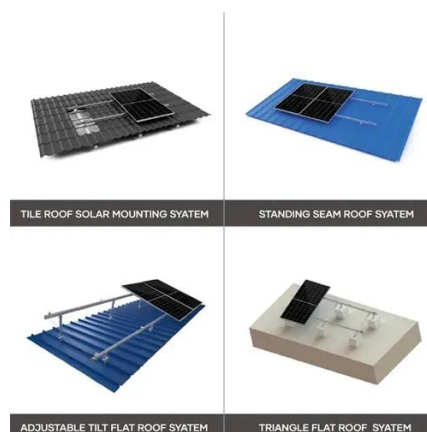
## Wind turbine

OverviewTypesHistoryWind power densityEfficiencyDesign and constructionTechnologyWind turbines on public display

Wind turbines can rotate about either a horizontal or a vertical axis, the former being both older and more common. They can also include blades or be bladeless. Household-size vertical designs produce less power and are less common. Large three-bladed horizontal-axis wind turbines (HAWT) with the blades upwind of the tower (i.e. blades facing the incoming wind) produce the overwhelming majority of wi...

## Wind Energy

Wind energy is "variable": how much electricity it produces depends on how much wind is blowing. In any energy system that relies partly on wind, other energy sources have to be ramped up ...



## [Wind turbine , Renewable Energy, Efficiency & Design , Britannica](#)

The term windmill, which typically refers to the conversion of wind energy into power for milling or pumping, is sometimes used to describe a wind

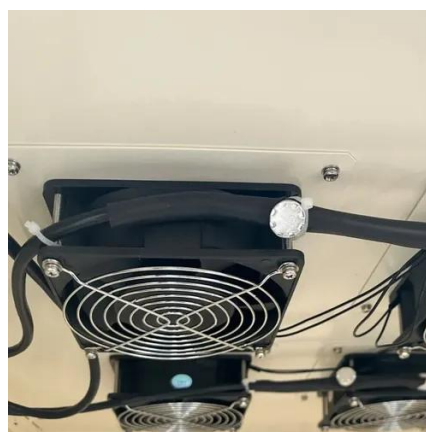


turbine. However, the term wind turbine is ...



## Wind Turbine System

Wind turbine system is the state of the art technology to provide high amount of energy source. This technology is growing fast all over the world because of its capability in supplying required energy.



Standard 20ft containers



Standard 40ft containers

## How a Wind Turbine Works

Wind turbines work on a simple principle: instead of using electricity to make wind--like a fan-- wind turbines use wind to make electricity. Wind turns the propeller-like blades of a turbine around a rotor, ...

## Wind turbine

A wind turbine is a device that converts the kinetic energy of wind into electrical energy. As of 2020, hundreds of thousands of large turbines, in installations known as wind farms, were generating over ...



[How Does Wind Energy Work: Complete](#)



## [Guide To Wind Power 2025](#)

Wind energy harnesses the natural movement of air to generate electricity through sophisticated turbine technology.





## Contact Us

---

For catalog requests, pricing, or partnerships, please visit:

<https://www.firmaskrzypek.pl>

Phone: +48 22 426 71 90

Email: [info@firmaskrzypek.pl](mailto:info@firmaskrzypek.pl)

Scan the QR code to access our WhatsApp.

