



Thirty square meters of solar panels





Overview

Most standard residential solar panels are around 65 inches by 39 inches, which translates to about 1. Free calculator with multiple units, efficiency modes, and detailed visualizations. This calculator provides estimates only and should not be used as the sole basis for solar system purchases or financial. How many watts are there for a 30-square-meter solar panel?

1. A 30-square-meter solar panel generates approximately between 4,500 to 7,500 watts of electricity, depending on various factors, such as the solar panel's efficiency, the intensity of sunlight in a given location, and the angle of. A typical home solar panel is about 3 feet wide by 5.5 feet long, occupying an area of roughly 17. This measurement can vary slightly based on the manufacturer and the specific model of the panel. Formula: $\text{Panels} = (\text{Roof Area} \times \text{Usable \%} \times (1 - \text{Spacing Loss \%})) \div \text{Panel Area} \rightarrow \text{Total Capacity (kW)} = \text{Panels} \times \text{Panel Wattage} \div 1000$. Solar panel installations have surged by more.



Thirty square meters of solar panels



How Many Square Meters Is One Solar Panel?

Standard residential panels are around 1.6 meters by 1 meter, allowing efficient coverage of roof space without overwhelming the structure. Commercial Use: Businesses often opt for larger ...

Solar Power per Square Meter Calculator

A solar power per square meter calculator takes details regarding these factors and then gives the accurate output generated by the solar panel per square meter.



[How much area is needed for solar panel installation](#)

A typical home solar panel is about 3 feet wide by 5.5 feet long, occupying an area of roughly 17.5 square feet (sq ft). On average, the amount of required roof space for a set of home ...

[How Many Square Meters is a Solar Panel: Key Insights](#)

Learn how many square meters a solar panel occupies, explore common myths, downsides, and find answers to your solar panel questions.

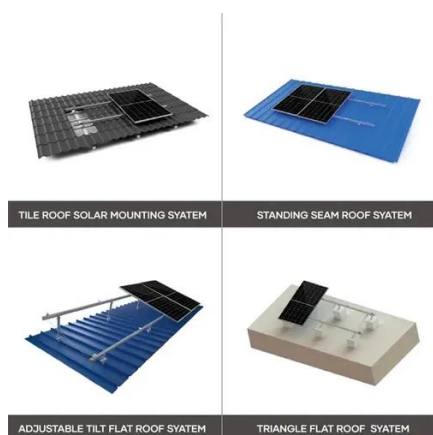


[Roof Area to Solar Panel Capacity Calculator \(kW Estimator\)](#)

Determining how many solar panels fit on your roof and the total power output (in kW) is one of the first steps in planning a solar installation. This Roof Area to Solar Panel Capacity Calculator helps ...

Solar Power Per Square Meter Calculator

Calculate solar panel energy output per square meter. Get accurate daily, monthly, and annual production estimates based on location, panel specs, and system losses.



[How many watts are there for a 30-square-meter solar panel?](#)

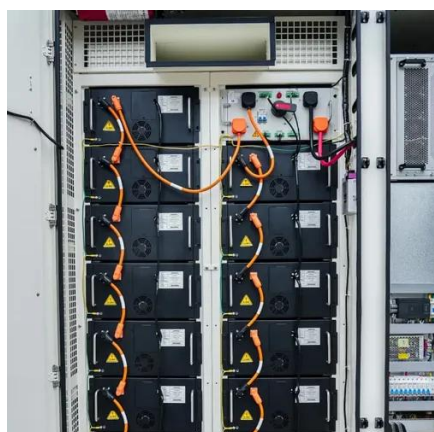
A 30-square-meter solar panel generates approximately between 4,500 to 7,500 watts of electricity, depending on various factors, such as the solar panel's efficiency, the intensity of sunlight ...

Solar Panel Watts Per Square Meter



Explained

Compare solar panels to see which generates most electricity per square meter. A higher W/m value means a solar panel produces more power from a given area. This can help you determine how ...



[Solar Energy Per Square Meter: How Much Power Can You Get?](#)

This article explores solar energy per square meter and the various factors that influence energy output, such as location, climate, and panel efficiency. It provides crucial calculations, ...

[Solar Energy Generation Per Square Metre: A Complete Guide](#)

In this guide, we'll explore how much solar power can be harnessed per square metre, how solar panels work, the factors that impact their efficiency, and the home solar system cost.





Contact Us

For catalog requests, pricing, or partnerships, please visit:

<https://www.firmaskrzypek.pl>

Phone: +48 22 426 71 90

Email: info@firmaskrzypek.pl

Scan the QR code to access our WhatsApp.

