



Trina 445 photovoltaic panel specifications





Overview

Trina Solar 445Wp Bifacial Glass-Glass N-Type PV Panel TSM-445NEG9RC. 27 maximum power 445 W, efficiency 22. Product Warranty 25 years, Performance warranty 30 years. Panel dimensions are 1134x1762x30 mm. First-year degradation 1% and annual degradation at 0. Specifications included in this datasheet are subject to. STC: Irradiance 1000W/m², Cell Temperature 25°C, Air Mass AM1. *Measuring tolerance: ±3%. CAUTION: READ SAFETY AND INSTALLATION INSTRUCTIONS BEFORE USING THE PRODUCT. Complete kits include inverter options from Enphase, SMA, Sol-Ark, and SolarEdge at competitive wholesale pricing, perfect for DIY installations or professional contractors. Boost performance in warm weather with low temperature coefficient and operating temperature. The panel is framed with.



Trina 445 photovoltaic panel specifications



[c o E o o c u u c o o a r o u E r o c E o o - c
L a n c o c](#)

installation cost with higher power bin and efficiency . Boost performance in warm weather w. erature Dual-glass Design, more secure and sustainable . Upgraded dual glass of Vertex S, less prone to m. ...

[445W Trina Vertex S+ Glass Glass Solar Panel Full Black](#)

The Trina Vertex S+ 445W TSM-445-NEG9R.25 Full Black half-cell glass-glass solar module combines state-of-the-art technologies, including high-density cell interconnection and multi-busbar ...



DT-M-0096-NA-EN A Datasheet_Vertex S+_NE09RH.05_2025_A

- Superior aesthetics with full black design, ideal for residential and C& I rooftops - Perfect size and weight less than 50 lbs for easier handling and installation - Certi ed mechanical performance up to ...

[Trina Solar 445W Vertex S+ N-Type TOPCon Bifacial, Dual Glass, ...](#)

The Trina Vertex S+ Dual Glass is equipped with the N-type TOPCon cell technology. Dual-glass improves durability, fire resistance, and performance. The panel delivers 445W output power and ...



[Trina Solar 445Wp Bifacial Glass-Glass N-Type PV Panel](#)

Designed to maximize electrical energy production, this panel stands out for its compact dimensions and its nominal power of 445 Wp, achieved through the use of high-intensity interconnection technology ...



[Trina Solar Vertex S+ 445W Module , TSM-NE09RC.05 , SES](#)

The Trina Vertex S+ 445W module delivers a blend of high power and advanced technology in a practical size. Its high efficiency means fewer modules are needed to achieve your energy goals, ...



DT-M-0084 A Datasheet_Vertex S+_NEG9R.25_EN_2024_A_web

STC: Irrdiance 1000W/m², Cell Temperature 25oC, Air Mass AM1.5. *Measuring tolerance: ±3%. NOCT: Irradiance at 800W/m, Ambient Temperature 20°C, Wind Speed 1m/s. ed connector. CAUTION: ...



Trina 445W TSM-445NEG9R.28-TS4



This solar panel incorporates high-grade monocrystalline silicon cells, renowned for their superior efficiency and longevity. With a conversion efficiency of 21%, it captures more sunlight and converts ...

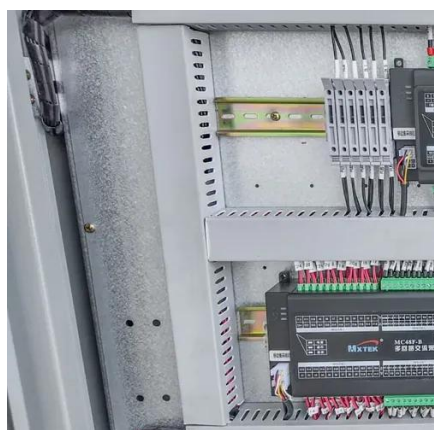


DT-M-0084 A Datasheet_Vertex ...

STC: Irradiance 1000W/m², Cell Temperature 25°C, Air Mass AM1.5. *Measuring tolerance: ±3%.
NOCT: Irradiance at 800W/m, Ambient Temperature 20°C, Wind Speed 1m/s. ed connector. ...

[Trina Solar Panels 415Watt 420Watt 430Watt 445Watt N Type Solar ...](#)

Up to 445W, 22.3% module efficiency with high density inter connect technology. Reduce installation cost with higher power bin and efficiency. Boost performance in warm weather with low temperature ...



[Trina Vertex S+ 445W Dual Glass N-Type Monocrystalline](#)

With a peak power output of 445W and a module efficiency of approximately 21.8%, this panel is optimized to deliver maximum energy yield per square meter. Its bi-facial design allows it to ...



Contact Us

For catalog requests, pricing, or partnerships, please visit:

<https://www.firmaskrzypek.pl>

Phone: +48 22 426 71 90

Email: info@firmaskrzypek.pl

Scan the QR code to access our WhatsApp.

