



Trina photovoltaic panel 600 watts





Trina photovoltaic panel 600 watts



Trina solar 600

High customer value Cost Of Energy). reduced BOS (Balance Of System) shorter payback time Lowest guaranteed first year and annual radiation; extended 30-year warranty Designed for compatibility with ...

Trina Solar 600W Panel TSM-600DE20

Maximize efficiency with Trina Solar 600W Solar Panels. Get yours at A1 SolarStore for reliable energy solutions!



trina 600w Solar Panels: High Efficiency & Low Cost

Discover top trina 600w solar panels with bifacial design, 210mm wafer size, and 21.5% efficiency. Compare verified suppliers, MOQs, and pricing. Click to find the best deal now!

[Factory Price For Trina N-Type 600W 610W 620W Bifacial Dual-Glass ...](#)

Equipped with N-type TOPCon technology and a 132 half-cut cell design, it achieves a maximum efficiency of 23.0% and a power output of 620W. The MBB (Multi-Busbar) technology optimizes light

...



[Trina 600W-620W Solar Panel Vertex N Mono Bifacial Glass](#)

Built for easy integration with your existing system components, this panel also boasts excellent bifacial performance, up to 30% additional rear-side gain, and a robust warranty for long-term peace of mind.



[600W Datasheet_VerTEX_DEG20C.20_EN_2020_PA2_web](#)

Power Bifaciality: $70 \pm 5\%$. NOCT: Irradiance at 800W/m, Ambient Temperature 20°C, Wind Speed 1m/s. *Please refer to regional datasheet for specified connector. CAUTION: READ SAFETY AND ...



[Trina Solar 600W \(Pallet of 36\) Vertex N Bifacial Dual ...](#)

Discover the pinnacle of solar innovation with the Trina Vertex N TSM ...



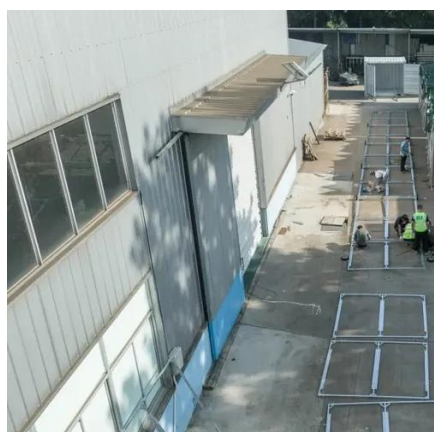
[Trina Solar 600W \(Pallet of 36\) Vertex N](#)



Bifacial Dual Glass TSM

Discover the pinnacle of solar innovation with the Trina Vertex N TSM-NEG19RC.20 Bifacial N-Type Solar Panel. Engineered for maximum energy yield, exceptional durability, and unparalleled ...

ESS



Trina Solar TSM-600NEG19RC.20

The Trina Solar Vertex N TSM-600NEG19RC.20 is a bifacial glass-glass PV module with monocrystalline N-type cells and a nominal power of 600 Wp (power range 580-605 W), offering an ...

Trina Solar , Vertex 600W TSM-DE20

Based on the 210mm large-size silicon wafer and monocrystalline PERC cell, the Vertex comes with several innovative design features allowing high power output of more than 605W. Excellent ...





Contact Us

For catalog requests, pricing, or partnerships, please visit:

<https://www.firmaskrzypek.pl>

Phone: +48 22 426 71 90

Email: info@firmaskrzypek.pl

Scan the QR code to access our WhatsApp.

