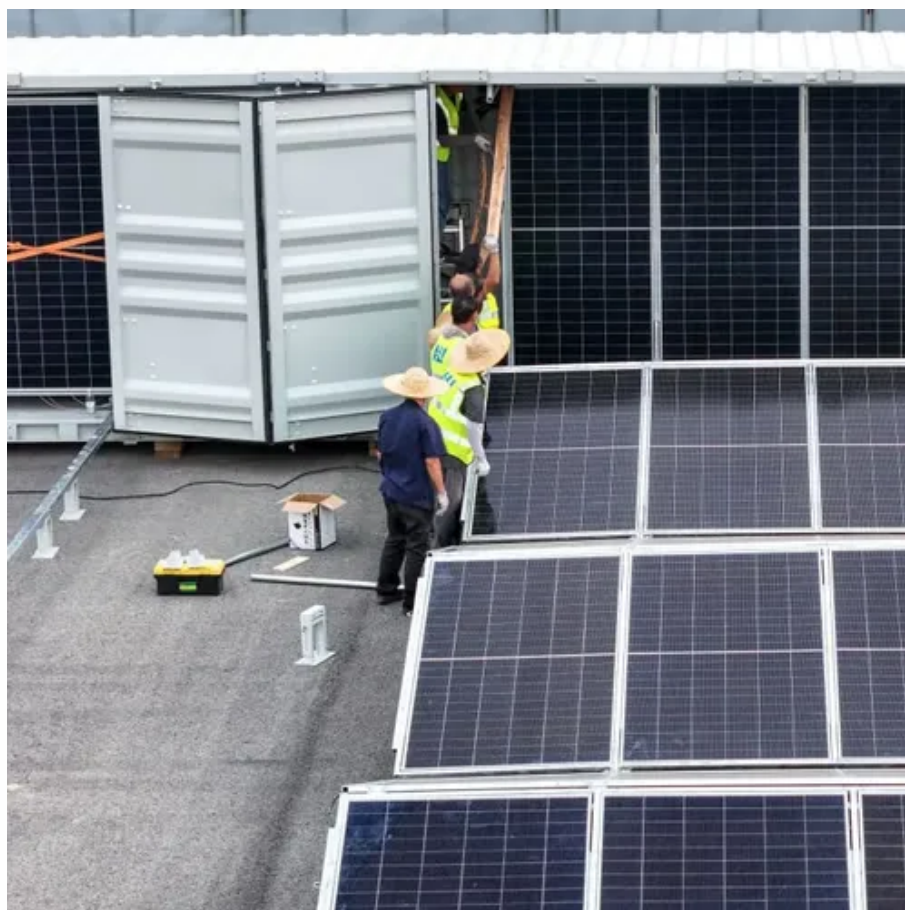




Trough type solar power generation mirror





Trough type solar power generation mirror

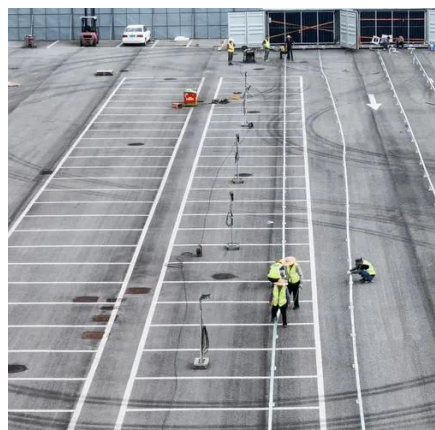


Parabolic trough

A parabolic trough collector (PTC) is a type of solar thermal collector that is straight in one dimension and curved as a parabola in the other two, lined with a polished metal mirror.

[Parabolic Trough Reflector for Solar Thermal Systems](#)

The parabolic trough reflector when used as a solar thermal energy collector is constructed as a long parabolic reflecting mirror which is usually painted a reflective silver, or made ...



HelioCon -Background on Concentrating Solar Power

The parabolic trough design consists of a curved mirror that reflects light onto a tube full of heat transfer fluid running the length of the trough. The linear Fresnel reflector is similar but is made up of a series ...

How CSP Works: Tower, Trough, Fresnel or Dish

Thermal Energy Storage
Basic Summary of The Four CSP Technologies
Tower Systems
Linear Fresnel Systems
Parabolic Dish Systems
There are four types of CSP technologies: The earliest in use was trough, and the predominant technology now



is tower. This is because tower CSP can attain higher temperatures, resulting in greater efficiency. See more on solarpaces

Searches you might like

mirror photo booth solar generator solar fountain solar water feature psu

10.2. Parabolic Trough Collector Systems , EME 811: Solar Thermal

Parabolic trough is the linear-focus collector, which consists of a cylindrically curved parabolic mirror, which reflects the sunlight onto a tubular receiver positioned in the focus line of the parabola.



Parabolic Trough

A parabolic trough is a type of solar thermal energy and is the most developed solar energy technology. It consists of a parabolic trough of a polished mirror of metal, an absorber tube located at the focal ...

How CSP Works: Tower, Trough, Fresnel or Dish

A trough solar collector field comprises multiple parabolic trough-shaped mirrors in parallel rows aligned to enable these single-axis trough-shaped mirrors to track the sun from east to west during the day to ...



[10.2. Parabolic Trough Collector Systems , EME 811: Solar Thermal](#)

Parabolic trough is the linear-focus collector, which consists of a cylindrically curved parabolic mirror, which reflects the sunlight onto a tubular receiver



positioned in the focus line of the parabola.

Parabolic Trough

What is a Parabolic Trough? A parabolic trough is a type of solar thermal collector that is used to harness the power of the sun to generate electricity. It consists of a long, curved mirror that is ...



Parabolic Trough

Parabolic trough technology is currently the lowest-cost CSP option for electricity production; however, unsubsidized electricity from troughs still costs about twice that from conventional sources.

[Trough Solar Thermal Power Generation Systems: How They Work ...](#)

Imagine using sunlight to power entire cities - not with solar panels, but with mirrors that create enough heat to generate steam for electricity. That's exactly what trough solar thermal power generation ...

Lithium battery parameters

Product capacity: 100Ah

Product size: 135*197*35mm

Product weight: 1.82kg

197mm
/7.7in

Product voltage: 3.2V

internal resistance: within 0.5



[Parabolic trough mirror and receiving tube](#)



from a concentrated solar

This section of parabolic trough mirror and receiving tube for use within a concentrated solar power (CSP) plant array exemplifies one of the renewable energy technologies key to delivering

...





Contact Us

For catalog requests, pricing, or partnerships, please visit:

<https://www.firmaskrzypek.pl>

Phone: +48 22 426 71 90

Email: info@firmaskrzypek.pl

Scan the QR code to access our WhatsApp.

