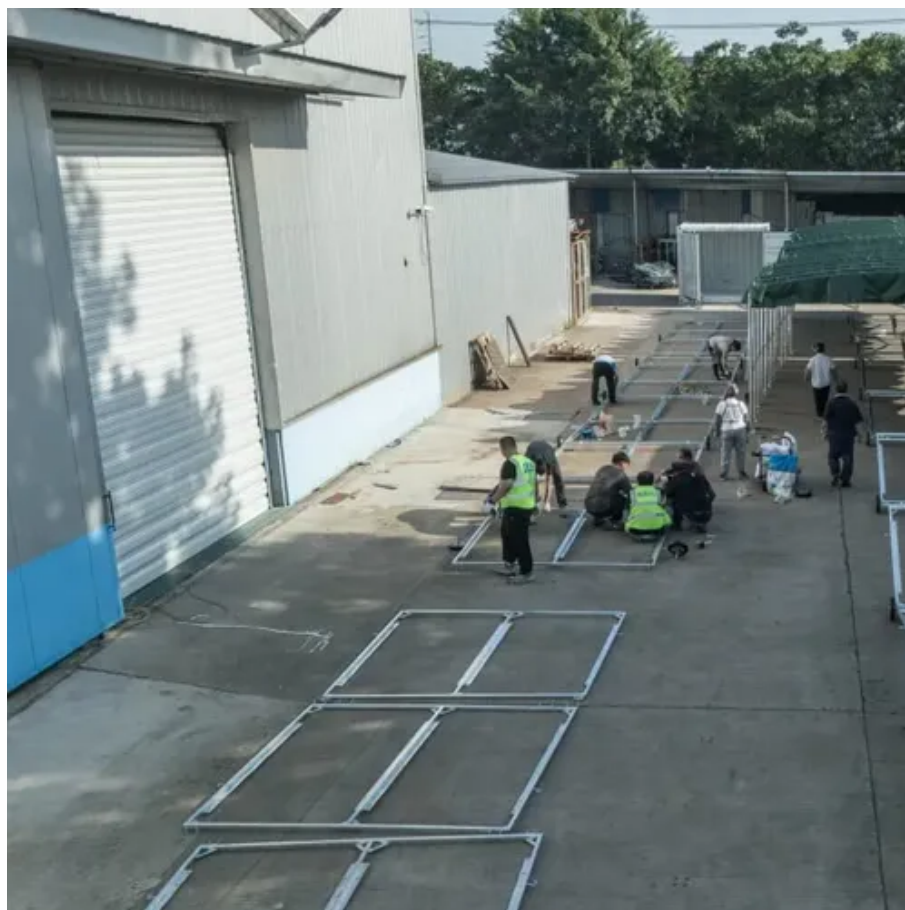




# Uninterruptible power supply is not connected to the power supply





## Overview

---

This guide will walk you through diagnosing and potentially fixing power supply-related issues on your own. What is an uninterruptible power supply system (UPS) and why do I need one?

An uninterruptible power supply (UPS) is an electrical device that provides emergency power to connected equipment when the main power source (typically utility power) fails. It conditions incoming power to ensure clean and. Perform the check shown below if the UPS is operating abnormally. The UPS does not start operation. "Power" switch is turned ON. Make sure that the AC input is securely connected to commercial power. The reason why UPS system proves to be essential is that. There are several actions you can take to run your business smoothly during power outages and not lose your precious customer data or existing customers entirely.



## Uninterruptible power supply is not connected to the power supply



### [Uninterruptible Power Supply Problems \[and Solutions\]](#)

When utility power is available, your UPS unit should not use batteries! If you noticed that it uses batteries when it shouldn't, make sure UPS is being supplied with power and check circuit breakers ...

### [Uninterruptible Power Supply Problems \[and Solutions\]](#)

When your UPS stops working after a power cut ends, it's likely because there is an incoming power issue. Check that your circuit ...



### [Uninterruptible Power Supply: What It Is and How It Works](#)

Unlike a common emergency power system or standby generator, an uninterruptible power supply can provide nearly instantaneous protection from input power interruptions by using the ...

## Uninterruptible Power Supply (UPS)

Perform the check shown below if the UPS is operating abnormally. For the user's manual, refer to the Uninterruptible Power Supply (UPS) User's Manual (Cat. No. U702).



## [Uninterruptible Power Supply Questions and Answers: Essential ...](#)

This comprehensive guide on uninterruptible power supply questions and answers has provided insights into how UPS systems work, how to choose the right one, and how to maintain them for long-term ...

## [Uninterruptible Power Supply \(UPS\) Troubleshooting FAQ](#)

If it doesn't work normally while UPS can't start without power supply, UPS will also close all outputs and display. If the power detection circuit works normally, please check if the battery voltage test circuit is ...



## [Uninterruptible Power Supply \(UPS\): Block Diagram & Explanation](#)

An Uninterruptible Power Supply (UPS) is defined as a piece of electrical equipment which can be used as an immediate power source to the connected load when there is a failure in ...

## [Why UPS Not Working After Power Cut? -](#)



## Troubleshooting Guide

When your UPS stops working after a power cut ends, it's likely because there is an incoming power issue. Check that your circuit breakers have not tripped, your fuses have not blown, ...



## Troubleshooting Power Supply Issues: A Step-by-Step Guide

Experiencing power supply issues with your PC can be frustrating, but many common problems can be resolved with a few troubleshooting steps. This guide will walk you through diagnosing and ...

## **How to Connect UPS to Power Supply**

In this guide, we will walk you through connecting a UPS to your power supply to ensure the safety and continuity of your devices. Uninterruptible Power Supply (UPS) systems offer essential backup power ...



## **Uninterruptible power supply FAQ**

A UPS ensures that connected devices remain operational during power outages by providing immediate backup power. It contains an internal battery that kicks in instantly when the main power ...



## Contact Us

---

For catalog requests, pricing, or partnerships, please visit:

<https://www.firmaskrzypek.pl>

Phone: +48 22 426 71 90

Email: [info@firmaskrzypek.pl](mailto:info@firmaskrzypek.pl)

Scan the QR code to access our WhatsApp.

