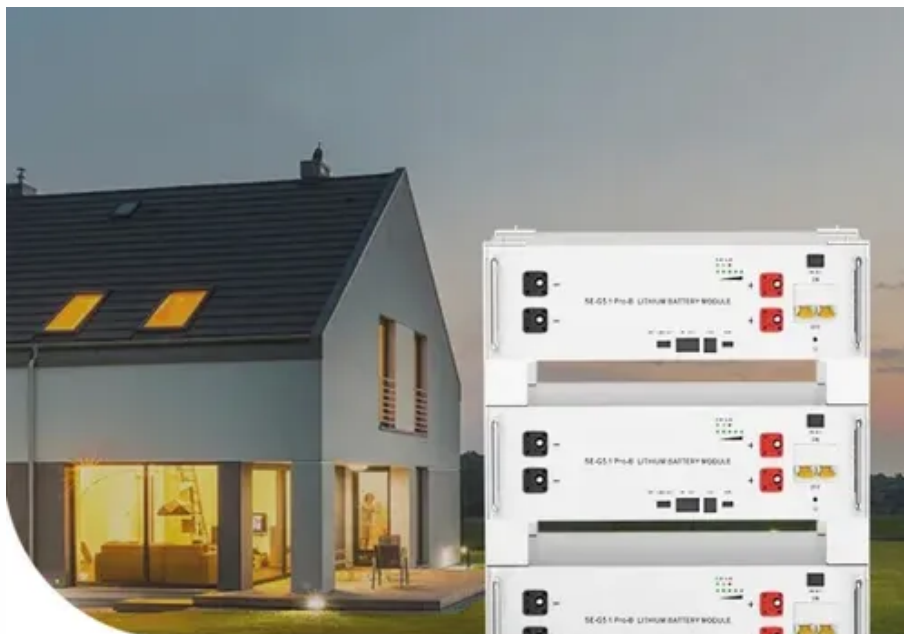




Victron bms serial starter



**Low Voltage
Lithium Battery**

6000+ Cycle Life





Victron bms serial starter



[dbus-serialbattery/docs/docs/general/install.md at master · Louisvdw](#)

You also need to connect your BMS to the Venus OS device using a serial interface. Use the cable for your BMS or a Victron branded USB->RS485 or USB->Ve.Direct (RS232) cable for best compatibility.

Battery Management Systems , Victron Energy

Our highly trained dealers are happy to help with questions, small or large. Find a dealer near you. Support. Check our support resources or contact your original dealer for dedicated support, repairs or warranty ...



Introduction , dbus-serialbattery

This driver is for Venus OS devices (any GX device sold by Victron or a Raspberry Pi running the Venus OS image). The driver interfaces with a Battery Management System (BMS) that supports serial ...

Victron VenusOS driver for serial battery BMS

I have created a VenusOS driver that can talk to BMS/Batteries that has serial communications (instead of the normal CANbus). RS485/RS232/TTL/UART and Venus 2.80+ have been tested.



[Battery Monitor driver for serial battery in VenusOS GX systems](#)

This is a driver for Venus OS devices (any GX device sold by Victron or a Raspberry Pi running the Venus OS image). The driver will communicate with a Battery Management System (BMS) that support serial (RS232, ...



Victron VenusOS driver for serial connected BMS

Thinking about the viability of the solution that connects the SBMS0 to the Raspberry Pi electrically. Unlike other BMS's used with VenusOS, an SBMS0 may have several connections to the whole ...



3. Installation and configuration

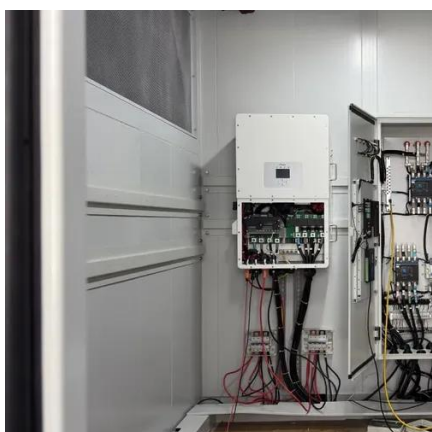
Disconnect the cabling from the minus pole of the starter battery. Pull off the remote on/off connector to prevent unwanted switching of the Smart BMS. Install and connect fuses and all electrical wiring, leaving the ...

How to troubleshoot , dbus-



serialbattery

During installation (execution of enable.sh) the enabling script creates a configuration file (/data/conf/serial-starter.d/dbus-serialbattery nf) for the serial starter. This allows the serial starter to ...



Smart BMS 12-200

It combines a Current Limiter, Battery Combiner and Battery Protector in a robust and compact solution and lets you safely connect any size 12V alternator (and starter battery), loads and chargers to Smart Lithium batteries.



Contact Us

For catalog requests, pricing, or partnerships, please visit:

<https://www.firmaskrzypek.pl>

Phone: +48 22 426 71 90

Email: info@firmaskrzypek.pl

Scan the QR code to access our WhatsApp.

