



What are the communication big data base stations





Overview

These stations, often towering structures with complex antenna arrays, form the fundamental building blocks of cellular networks, enabling seamless connectivity for billions of users worldwide. They are referred to as cell towers or cellular antennas. These types of objects are an inevitability since they serve the purpose of. Base stations are the foundational elements that make this connectivity possible, acting as fixed points that bridge the gap between a mobile device's radio signal and the global wired network. They are communication hubs in a cellular network that ensure continuous service as users move throughout. The answer lies all around us, in the mysterious "boxes" and "antennas" standing on rooftops, roadsides, or towers—base stations. If the mobile communication network were a giant spider web, the base station would be every single node on that web.



What are the communication big data base stations



Traffic Processing Model of Big Data Base Station based on ...

The model constructed in this study based on CNN and improved regression tree algorithm can accurately predict the communication quality of wireless big data base stations.

Traffic Processing Model of Big Data Base Station Based on Hybrid

Therefore, this research builds an RPMA communication quality prediction model for big data wireless base stations, which combines the convolutional neural network (CNN) algorithm and the lifting ...



Understanding Base Stations in Mobile Communication

A base station is a fixed point that enables wireless communication between mobile devices and the network. These stations consist of radio transceivers, antennas, and a controller which facilitate the ...



What Is a Base Station? Definition and How It Works

This infrastructure allows billions of mobile devices to connect instantly, sharing voice, video, and data. Base stations are the foundational elements that make this connectivity possible, ...



What is a Base Station? -- From Communication Core to Thermal ...

How Does a Base Station Work? A base station's operation can be summarized in three steps: wireless transmission, signal conversion, and network connection. First, the base station uses ...



Macro Base Stations: The Backbone of Mobile Communication

These stations, often towering structures with complex antenna arrays, form the fundamental building blocks of cellular networks, enabling seamless connectivity for billions of users worldwide.



Base Stations: The Core and Future of Telecom Networks

A telecom base station, also known as a mobile communication base station, is a wireless communication device comprised of antennas, transmitters, and controllers.

Base Stations and Cell Towers: The Pillars



of Mobile Connectivity

Base stations use antennas mounted on cell towers to send and receive radio signals to and from mobile devices within their coverage area. This communication enables users to make ...



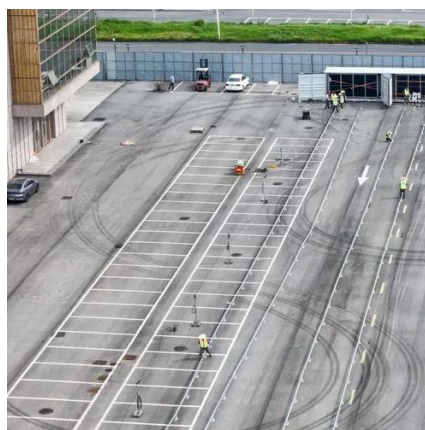
Understanding Base Stations' Behaviors and Activities with Big Data

This paper uses big data technologies to study base stations' behaviors and activities and their predictability in mobile cellular networks. With new technologies quickly appearing, current cellular ...



Base Stations

The present-day tele-space is incomplete without the base stations as these constitute an important part of the modern-day scheme of wireless communications. They are referred to as cell ...





Contact Us

For catalog requests, pricing, or partnerships, please visit:

<https://www.firmaskrzypek.pl>

Phone: +48 22 426 71 90

Email: info@firmaskrzypek.pl

Scan the QR code to access our WhatsApp.

