



What direction should photovoltaic panels be laid





Overview

The panel should be oriented toward the direction that receives the most sunlight, which is typically south in the Northern Hemisphere and north in the Southern Hemisphere. The direction of your solar panels is an essential consideration in determining the best orientation for your. Orientation refers to the cardinal direction your solar panels face (north, south, east, or west), also known as the azimuth angle. A correctly tilted system can improve efficiency by 5–10% annually, reducing payback time and boosting long-term savings. For homes in the Southern Hemisphere, it should be facing true north.



What direction should photovoltaic panels be laid



[Solar Panel Placement: Best Direction & Orientation Guide](#)

Discover the optimal solar panel direction, placement & orientation to maximize energy efficiency. Boost savings with expert tips for an ideal setup!

[How to Find the Best Orientation and Angle of Solar Panels?](#)

Ideally, to optimize energy capture, you should put solar panels perpendicular to the sun rays to allow the solar panel to absorb as much radiant energy as possible, resulting in the highest production ...



[Solar Panel Orientation: Everything You Need to Know](#)

What is the best angle for Solar Panels? The best angle for solar panels is between 30 degrees and 45 degrees. This is because the best angle for solar panels is generally equal to the ...



[Solar Panel Direction & Orientation: 2025 Complete Guide](#)

Discover the optimal direction and angle for solar panels to maximize energy output. Complete guide with calculations, tools, and location-specific recommendations for 2025.



What Direction Should Solar Panels Face? Understanding the Basics ...

The optimal direction for solar panels to face is generally south in the Northern Hemisphere, as this orientation maximizes sunlight capture throughout the day, potentially increasing energy generation ...



What Is the Best Direction for Solar Panels?

For the best results, you should prioritize solar panel direction over solar panel angle. The best way to do this is to get the direction right first, and then calculate the optimal angle.



Optimal Orientation for Solar Panels: Landscape vs. Portrait

To maximize energy generation, panels must be positioned at the right angle and direction based on location and weather data. Optimal power is harnessed when sunlight hits perpendicularly.



Solar Panel Best Angle , Tilt & Orientation



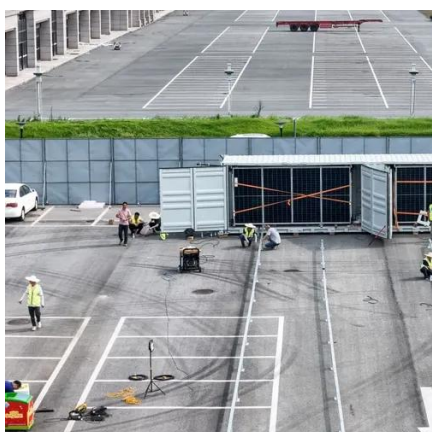
[Guide 2025](#)

In this guide, we'll break down the science behind the best solar panel angle, explain how to calculate it based on latitude, show seasonal adjustments, and share competitor-winning insights ...



Solar panel orientation

In the northern hemisphere, the general rule for solar panel placement is, solar panels should face true south (and in the southern, true north). Usually this is the best direction because solar panels will ...



[Maximize Efficiency: Best Direction for Solar Panels , Sunrun](#)

Solar panels are usually placed on your roof, preferably the side that gets the most direct sun. That's because even though panels will produce some energy whenever they face the sun, their ...





Contact Us

For catalog requests, pricing, or partnerships, please visit:

<https://www.firmaskrzypek.pl>

Phone: +48 22 426 71 90

Email: info@firmaskrzypek.pl

Scan the QR code to access our WhatsApp.

