



What is a medium-square photovoltaic panel





Overview

Solar cell dimensions are typically around 189 x 100 x 3.5 inches long, and 63. In 2020, the International Energy Agency (IEA) declared solar power to be the cheapest energy source available and now the option to lower operating costs by using a cheaper form of energy has made solar accessible to businesses of all sizes. If you're exploring solar for your business, it's. Solar panel sizes and wattage range from 250W to 450W, taking up 1.6 to 2 square metres per panel. Still, most 60-cell solar panels have a size of 39" X 66" and most 72-cell solar panels have sizes of around 39" X 77". Because each solar system is customized for a specific home, the number of panels you can squeeze up there will determine how much power you can generate, and whether that will make a significant impact for your home.



What is a medium-square photovoltaic panel



[Guide to Solar Panel Sizes & Dimensions \(October 2025\)](#)

Discover which solar panel sizes and dimensions are the most common in the UK, as well as which size is the best for your home.

[How Big Are Solar Panels? Here's Their Typical Size and Weight](#)

So a typical, residential rooftop solar system with 25 panels would take up about 375 square feet of roof space, but the size of your specific system will depend on your energy consumption. If



[Solar Panels Size & Weight \(Including Commercial Dimensions\)](#)

Multiple solar cells are assembled together to form a rectangular shaped panel. The standard solar panel size typically contains either 60 or 72 cells. You can also find panels with as few ...

Sizing and Design , Tesla Support

Tesla solar panels are designed to meet customers' energy needs. Learn more about how we size each system for your home.



Standard Solar Panel Sizes And Wattages (100W-500W Dimensions)

The goal here is to get to the average solar panel size by wattage. You can find typical dimensions of 100W, 150W, 170W, 200W, 200W, 220W, 300W, 350W, 400W, and 500W solar panels summarized ...

How Big are Solar Panels?

The efficiency of solar panels is dependent on several factors, one of which is their size. This article explores the different sizes of solar panels and the factors to consider so you can choose the correct ...

ESS



What Are the Common Solar Panel Sizes?

60-cell solar panels are popular for residential installations due to their manageable size and weight. These panels typically measure: With a power output ranging from 270 to 300 watts, 60 ...

Solar Panel Sizes and Wattage



Explained

Ultimately, for calculating the right solar panel dimension and wattage you must consider the average daily energy consumption and sunlight exposure. Moreover, it's crucial to factor in the ...

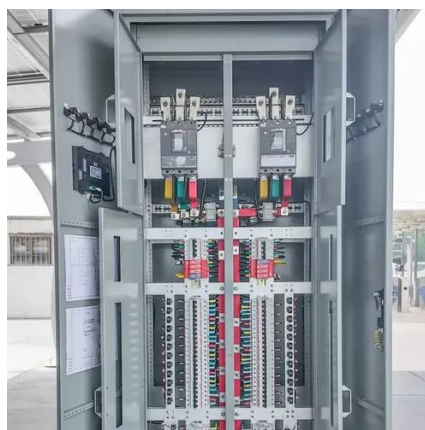


What is a medium-square photovoltaic panel

What is a photovoltaic (PV) solar panel? This solar panel is a photovoltaic (PV) panel that offers several advantages over the standard solar panel size, making them a good alternative.

What's the Average Solar Panel Size and Weight?

A typical home solar panel is 65 inches by 39 inches, or 5.5 feet by 3.25 feet, and weighs about 42 pounds. Panels may vary in size and weight depending on their total power output, type, ...





Contact Us

For catalog requests, pricing, or partnerships, please visit:

<https://www.firmaskrzypek.pl>

Phone: +48 22 426 71 90

Email: info@firmaskrzypek.pl

Scan the QR code to access our WhatsApp.

