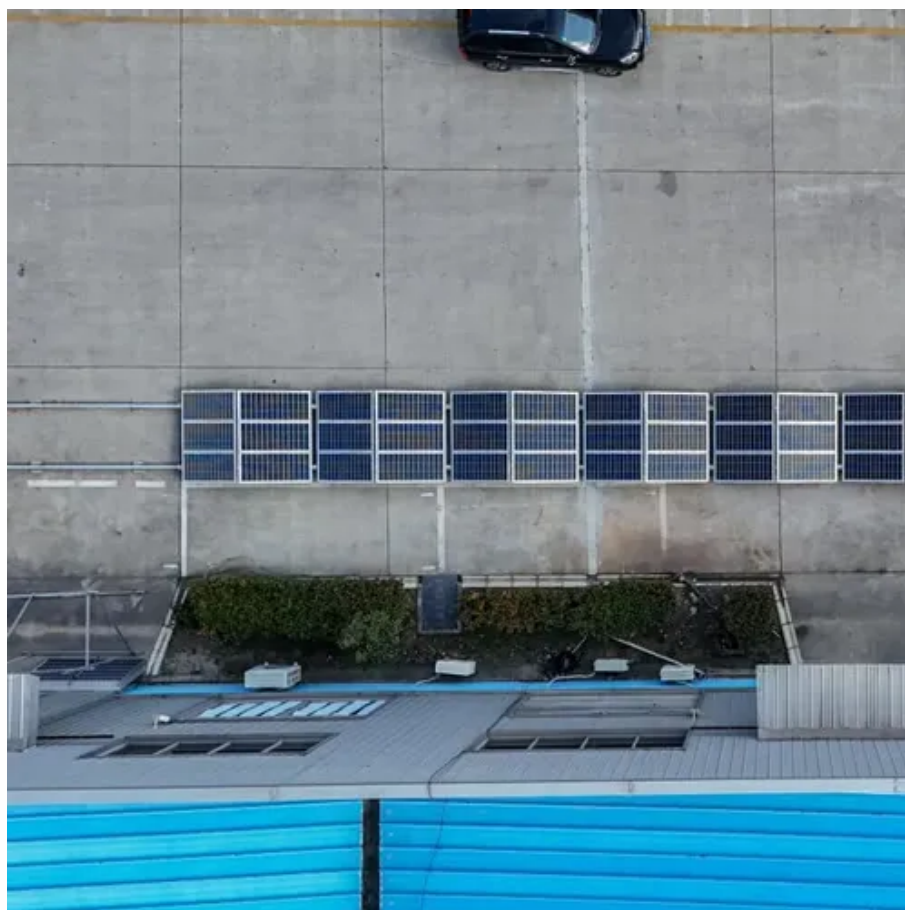




# What is the appropriate angle for solar mounts





## Overview

---

The best angle for solar panels usually matches your latitude. Flatter tilts work better in summer, steeper tilts in winter. Adjustable mounts give more output but cost more. Roof pitch, shading, and budget also affect the right angle. Fixed setups near your latitude are simple and. The solar panel's best angle determines how much sunlight your panels capture throughout the year, directly impacting energy production and ROI. A correctly tilted system can improve efficiency by 5–10% annually, reducing payback time and boosting long-term savings.



## What is the appropriate angle for solar mounts



### What Is the Best Angle for Solar Panels?

The rule of thumb is that your solar panels should be tilted at an angle roughly equal to your latitude to optimize the amount of sunlight they receive throughout the day and the year.

### What is the Best Angle for Solar Panels? Maximizing the Efficiency

Generally, the optimal angle is equal to your latitude plus 15-20 degrees in the summer and minus 15-20 degrees in the winter. This angle ensures that the panels receive maximum sunlight throughout the ...

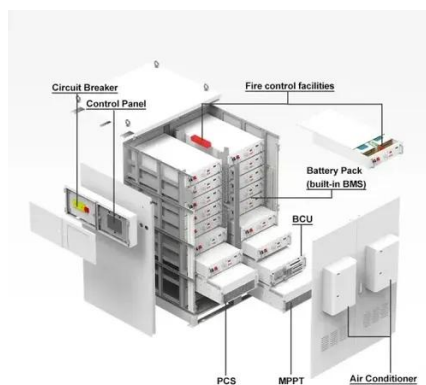


### Solar Panel Best Angle , Tilt & Orientation Guide 2025

Find the best solar panel angle for your location. Learn tilt formulas, seasonal adjustments, and tips to maximize energy efficiency in 2025.

### What Is the Best Angle for Solar Panels? - BougeRV

The general rule of thumb for finding the best angle is to set your solar panels at an angle that equals your latitude. For example, if you live in Los Angeles, which sits at about 34 degrees north, you'd ...



### [What is the appropriate angle for solar cells? , NenPower](#)

Generally, it is recommended that solar panels be set at an angle equal to the local latitude for optimal annual energy production. For instance, locations closer to the equator may ...

### [Optimal Roof Angle for Solar Panels: A Practical Guide to Performance](#)

The angle at which solar panels are mounted affects how much sunlight arrives at the module surface over the year. A steeper tilt improves winter performance by reducing the sun's ...



### [What is the ideal angle for mounting solar panels? - AHODSOLAR](#)

With SIC Solar robust mounting systems, you can easily achieve the optimal tilt for your solar panels, whether they're installed on a roof or ground-mounted. By setting your panels at the ...

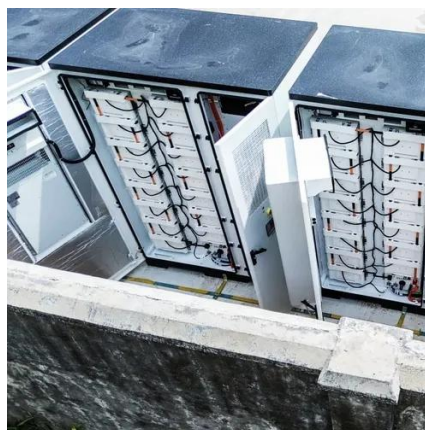


## The Best Angle for Solar Panel



## Installation

In general, solar panels should be installed so the sunlight hits them at as close to a perpendicular 90-degree angle for as long as possible during the day. To achieve that goal, most ...



### [What is the best angle for solar panels - Expert Tips](#)

Finding the best angle for your solar panels isn't rocket science, but it does make a difference. Aim to match your panel tilt with your latitude for year-round balance.

### [Solar Panel Orientation and Tilt Angle: How Mounting ...](#)

Learn how solar panel orientation, tilt angle, and mounting structures impact efficiency and energy output in various environments.





## Contact Us

---

For catalog requests, pricing, or partnerships, please visit:

<https://www.firmaskrzypek.pl>

Phone: +48 22 426 71 90

Email: [info@firmaskrzypek.pl](mailto:info@firmaskrzypek.pl)

Scan the QR code to access our WhatsApp.

