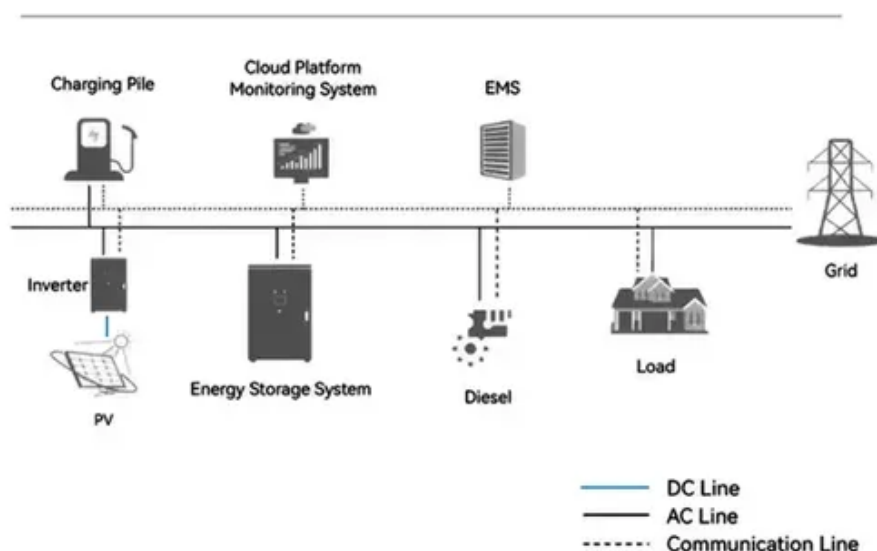




What is the appropriate weight of the photovoltaic panels on the roof

System Topology





Overview

Typical residential solar panels weigh between 40 and 48 pounds per panel depending on size and cell count. Standard 60-cell panels average about 40 pounds, while larger 72-cell or high-efficiency panels can weigh up to 48 pounds. This article explains typical panel weights, how mounting hardware contributes to total mass, and how to assess a roof's ability to safely support a solar installation. It covers estimating dead loads, accounting for live loads such as snow and wind, and structural considerations professionals. Understanding the weight of solar panels on roof systems helps ensure safety, code compliance, and long-term performance. Roof slopes, rafters, and existing structural capacity influence whether a retrofit is feasible without reinforcement.



What is the appropriate weight of the photovoltaic panels on the roof



2MW / 5MWh
Customizable

[Weight of Solar Panels on Roof: A Comprehensive Guide for ...](#)

Roof weight is influenced by PV modules, racking hardware, wiring, and ballast where required. A typical residential system adds between 2.5 to 4 pounds per square foot (psf) to the ...



average photovoltaic solar panel weight guide

Generally, standard residential photovoltaic panels weigh between 40 and 50 pounds (about 18 to 22 kilograms). This weight makes them manageable, but still requires careful lifting ...

[Weight of Solar Panels on Roof: Understanding Panel and System Load](#)

To understand how much weight a given system adds to a roof, a practical rule of thumb is to sum the panel weight, the mounting hardware weight, and any ballast or anchors used for stability.



[How Big Are Solar Panels? Here's Their Typical Size and Weight](#)

Frank said the typical weight of a solar panel is around 3 pounds per square foot. On that 25-panel example from before, that would weigh about 1,125 pounds. A whole solar system weighs about the



[Weight of Solar Panels on Roof: Understanding Mass, Roof Load, and](#)

Solar panels add valuable energy to homes, but their weight matters for roof integrity. This article explains typical panel weights, how mounting hardware contributes to total mass, and ...



[Weight of Solar Panels on Roof: What Homeowners Need to Know](#)

Solar panel weight on a roof is a common concern for homeowners considering solar installations. This article explains typical panel weights, how those loads affect roof structures, and ...



Solar Panel Weight Guide - Solar Generation USA

Solar panels are typically installed on rooftops, which means their weight is directly supported by your home or building's structure. If your roof isn't strong enough to bear the additional load, it could lead ...

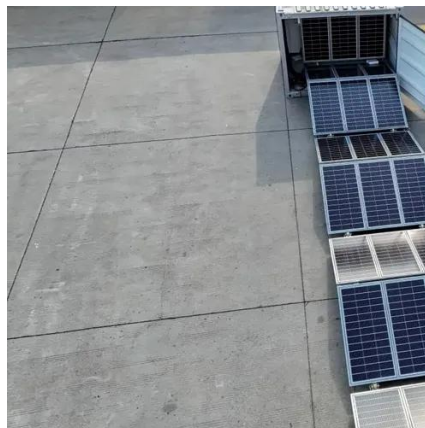


[The Ultimate Guide to Solar Panel Size.](#)



Weight & Wattage (2025)

Standard residential solar panels are typically around 5.8 feet long by 3.5 feet wide and weigh between 40 to 50 pounds. However, the exact dimensions depend heavily on the panel's ...



Solar Panel Size and Weight: A 2025 Guide (with Examples)

Average Residential Panel Weight: Most panels weigh between **40 and 50 pounds**. The "Bridge" (Total Roof Load): A standard 20-panel residential system will add **800 to 1,000 pounds** of static ...

Understanding Roof Load Capacity for Solar Panels

In most cases, a solar panel installation will now only increase the load on a roof by somewhere around 2 to 4 pounds per square foot. The number of solar panels you install generally ...





Contact Us

For catalog requests, pricing, or partnerships, please visit:

<https://www.firmaskrzypek.pl>

Phone: +48 22 426 71 90

Email: info@firmaskrzypek.pl

Scan the QR code to access our WhatsApp.

