



What is the discharge current of the 48v lithium battery in the base station





Overview

0 discharge current: 50A instantaneous discharge current: 300A discharge cut-off voltage: 37.5V finished product internal resistance: ≤ 200 Mohm battery weight: 35kg product Size: 482*477*133.2mm (Max) discharge temperature:-20~60 °C storage Temperature:-20~60 °C. The discharge rate of a battery refers to the rate at which it can deliver electrical energy over a specific period. It is typically expressed in terms of a C-rate, which is a measure of the current drawn from the battery relative to its rated capacity. For example, a 1C discharge rate means that. Below is the voltage chart for a 48V LiFePO₄ battery: Full Charge (58). Understanding these specifications is. A 48-volt lithium battery—predominantly the lithium iron phosphate (LiFePO₄) type in commercial and residential use—is a high-efficiency rechargeable energy storage solution engineered for reliability and performance. At its core, it consists of 16 individual 3.



What is the discharge current of the 48v lithium battery in the base s



48V Lithium-Ion Batteries Discharge Methods

The discharge rate of 48V lithium-ion batteries is often expressed in C ratings. For example, a 1C rating means that the battery can be discharged at a current equal to its capacity.

[How Many Amps Does a 48V Lithium-Ion Battery Provide?](#)

A 48V lithium-ion battery typically provides varying current outputs depending on its capacity and design. For example, common configurations include batteries rated at 24Ah, 30Ah, or ...



What is the charge

For a 48V lithium battery pack, the mid - discharge voltage typically ranges from around 42V - 48V, depending on the battery's state - of - charge and the load current.

[48V LiFePO4 Battery: Definition, Lifespan and Charging Guide](#)

How to Charge a 48-Volt Lithium Battery Safely?
Charging a 48V lithium battery requires adherence to chemistry-specific protocols to preserve lifespan and ensure safety--especially for ...



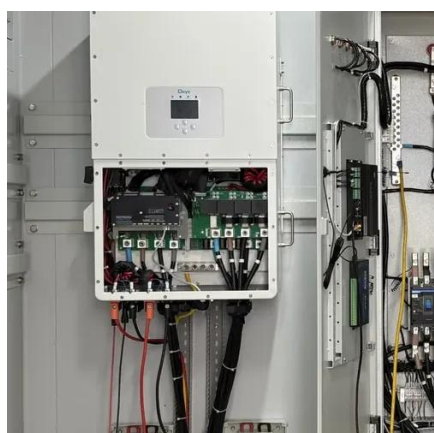
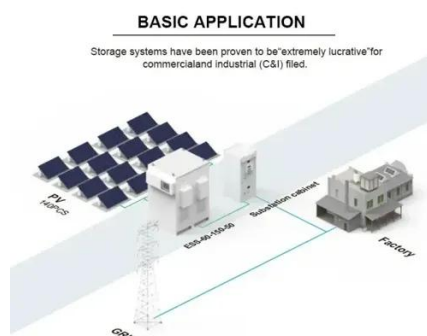
[48V 50Ah Mobile Communication Base Station Lithium Iron ...](#)

48v 50Ah mobile communication base station lithium iron phosphate battery cell Model: Fe25Ah/25Ah/3.2V battery Specification: Fe25Ah-15S2P/48V/50Ah nominal Voltage: 48V nominal ...



Amazon : 48v Lithium Battery Golf Cart

1-48 of over 1,000 results for "48v lithium battery golf cart" Results Check each product page for other buying options. Price and other details may vary based on product size and color.



[Comprehensive Guide to 48V Lithium-Ion Battery Packs](#)

Wide Operating Temperature Range: Typically from -20°C to 60°C. Modularity and Scalability: Multiple packs can connect for higher voltage or capacity requirements. How are 48V ...

[48V LiFePO4 Cell Charging and](#)



[Discharging Voltage Chart](#)

Understanding the voltage characteristics of your 48V LiFePO4 battery and adhering to best practices for charging, discharging, and maintenance are essential for optimal performance and ...



What is the discharge rate of a 48V battery?

If a 48V battery has a capacity of 100Ah (ampere-hours), a 1C discharge rate would correspond to a current of 100A. The C-rate is an important parameter because it determines how quickly the battery ...

[48V Lithium-Ion Batteries: Charging Methods and Best Practices](#)

In the first phase, current is held constant until the battery approaches its maximum voltage. The charger then switches to constant voltage while the current gradually decreases to ...





Contact Us

For catalog requests, pricing, or partnerships, please visit:

<https://www.firmaskrzypek.pl>

Phone: +48 22 426 71 90

Email: info@firmaskrzypek.pl

Scan the QR code to access our WhatsApp.

