



What is the maximum watt of a photovoltaic panel





Overview

The highest wattage residential solar panels currently available reach 670 watts for commercial-sized residential applications, with standard residential formats typically maxing out at around 550 watts. The LONGi Hi-MO X10 series leads the market with up to 670W output. A key factor in this leap forward has been the transition to larger wafer formats, such as M10. Space Efficiency Drives Value: High-wattage panels (550W+) are most cost-effective for homes with limited roof space, providing up to 30 square feet of space savings compared to standard 400W panels for equivalent power output. It's measured in watts (W) and reflects the panel's "nameplate" peak output (often listed as Pmax on the spec sheet). Higher efficiency photovoltaic (PV).



What is the maximum watt of a photovoltaic panel



[Highest Wattage Solar Panels: Everything You Need to Know](#)

In the commercial sector, the highest wattage solar panels currently available on the market are 700W Wattage Solar Panels. These panels, featuring a remarkable 144 half-cut solar cells, maximize power ...

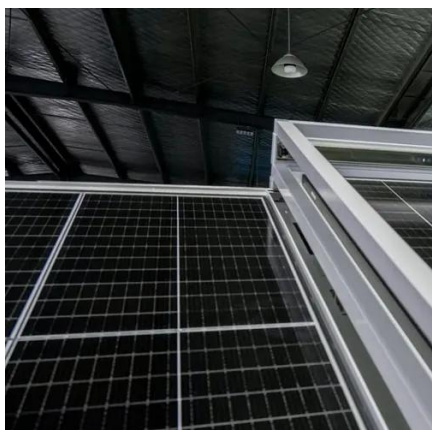
Solar Panel Ratings Explained

This means that, under ideal conditions, the 100W solar panel could generate between 97 and 103 Watts of power. However, since the power output is directly linked to Solar Irradiance ...



20+ Most Powerful Highest Watt Solar Panels

The maximum watt of solar energy typically refers to the highest amount of power that a solar panel can produce under ideal conditions, which is ...



Solar Panel Wattage & Output Explained

Solar panel wattage is the maximum power a panel can produce under standardized lab conditions. It's measured in watts (W) and reflects the panel's "nameplate" peak output (often listed ...

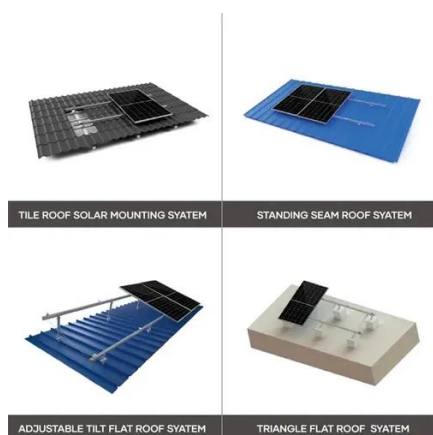


20+ Most Powerful Highest Watt Solar Panels

For large commercial tasks, solar panels of 500 watts or higher are common. Meanwhile, for residential setups, the highest wattage solar panels typically range between 400 and 500 watts. ...

What is WP in Solar Panels? Understanding Watt-Peak (Wp)

Understanding solar panel watt peak is crucial for evaluating solar panel efficiency, performance, and potential energy output. In this article, we will break down WP in solar panel, its ...



Most powerful solar panels 2025

Today in 2025, we're seeing commercially available panels reaching close to 750W, and early production modules already exceeding 760W, with several manufacturers targeting 800W+ ...

What is the solar panel peak power? Watt



peak definition

A watt-peak (Wp) is the maximum electrical energy that a photovoltaic panel can supply under standard test conditions. The notion of watt-peak is used to compare the performance of PV ...



What Is the Highest Wattage Solar Panel?

In the residential sector, the maximum wattage for solar panels is around 500 watts. This limitation is largely due to the need to ensure the panels are suitably sized for most residential rooftops.

Highest Watt Residential Solar Panels 2025 [Complete Guide]

How many watts is the highest residential solar panel? The highest wattage residential solar panels currently available reach 670 watts for commercial-sized residential applications, with ...



What is the maximum watt of solar energy? , NenPower

The maximum watt of solar energy typically refers to the highest amount of power that a solar panel can produce under ideal conditions, which is determined by its wattage rating.



Contact Us

For catalog requests, pricing, or partnerships, please visit:

<https://www.firmaskrzypek.pl>

Phone: +48 22 426 71 90

Email: info@firmaskrzypek.pl

Scan the QR code to access our WhatsApp.

