



What is the power limit of photovoltaic panels





Overview

Initially, Shockley and Queisser calculated a limit of 30% for silicon solar cells. Despite advancements, current solar cell production efficiencies vary based on the semiconductor material's. Solar panels represent the future of energy. However, the maximum recorded efficiency of a commercial solar cell is 33% due to certain energy barriers at the molecular level. Improving this conversion efficiency is a key goal of research and helps make PV technologies cost-competitive with. Solar-cell efficiency is the portion of energy in the form of sunlight that can be converted via photovoltaics into electricity by the solar cell.



What is the power limit of photovoltaic panels



Fundamental Photovoltaic Limits

Thus the maximum possible current (electrons per second times the charge on an electron) is directly related to the rate of photon absorption (photons per second). The average solar intensity reaching

...

Solar-cell efficiency

Overview Factors affecting energy conversion efficiency Comparison Technical methods of improving efficiency See also

The factors affecting energy conversion efficiency were expounded in a landmark paper by William Shockley and Hans Queisser in 1961. See Shockley-Queisser limit for more detail. If one has a source of heat at temperature T_s and cooler heat sink at temperature T_c , the maximum theoretically possible value for the ratio of work (or electric power) obt...



Shockley-Queisser limit

The Shockley-Queisser limit only applies to conventional solar cells with a single p-n junction; solar cells with multiple layers can (and do) outperform this limit, and so can solar thermal and certain other ...

Solar Performance and Efficiency

Not all of the sunlight that reaches a PV cell is



converted into electricity. In fact, most of it is lost. Multiple factors in solar cell design play roles in limiting a cell's ability to convert the sunlight it receives. ...

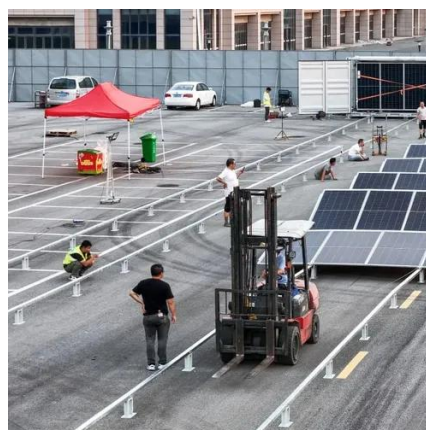


[Solar Energy Efficiency: Beyond the Shockley Queisser Limit](#)

Initially, Shockley and Queisser calculated a limit of 30% for silicon solar cells. However, modern calculations have refined this to 33% for any single-junction solar cell. Despite advancements, ...

Solar-cell efficiency

Normal photovoltaic systems however have only one p-n junction and are therefore subject to a lower efficiency limit, called the "ultimate efficiency" by Shockley and Queisser.



[Why Solar Panels Can't Get Much More Efficient \(And That's Okay\)](#)

Commercially available solar panels now routinely convert 20% of the energy contained in sunlight into electricity, a truly remarkable feat of science and engineering, considering that it is ...

[The 120 % Solar Rule Explained: What It](#)



Means for Homeowners in ...

The "120 % solar rule" could limit your system for billing or wiring reasons--sometimes both. States like Colorado and California now allow 150-200 % sizing, anticipating electrified homes.



Most efficient solar panels 2025

Solar Panel Efficiency explained. Solar panel efficiency is the amount of sunlight (solar irradiance) that falls on the surface of a solar panel and is converted into electricity. Due to the many ...

Thermodynamic limits , King Lab

We are exploring the physics of single-junction solar cells as they approach this photonic limit to learn how to best approach the theoretical efficiency of PV cells.



Why Is There A Limit To The Efficiency Of Solar Panels?

The Shockley-Queisser Limit, more commonly known as the SQ Limit, is the most prominent scientific measure for the efficiency of solar cells. It measures the theoretical efficiency of a ...



Contact Us

For catalog requests, pricing, or partnerships, please visit:

<https://www.firmaskrzypek.pl>

Phone: +48 22 426 71 90

Email: info@firmaskrzypek.pl

Scan the QR code to access our WhatsApp.

