



What is the size of Huijue 635W solar panels





Overview

Sunpal's TOPCon BiMAX5N Bifacial Ultra Black Dual Glass solar modules utilize 182mm cells to achieve power output ranging from 410W to 635W, ensuring sufficient energy production for Shanghai Huijue Technologies Group Co., Ltd Solar Panel Series HJ-SM675-700-12M. Better light trapping and current collection to improve module power output and reliability. Excellent Anti-PID performance guarantee via optimized mass-production process and materials control. 0 technology has better reliability and lower LID/LETID. ●The conversion efficiency of solar cell is above 23%. Perfect for grid. See the table below for available information we have about Jinko Solar Co Ltd JKM635N-66HL4M-BDX solar panels. Certified to. The SP635M-78H module combines the S-TOPCo 2. The bifacial design of the SP635M-78H module enables the absorption of light from both the front and. Product Documentation Certifications & Qualifications Questions about this product?



What is the size of Huijue 635W solar panels

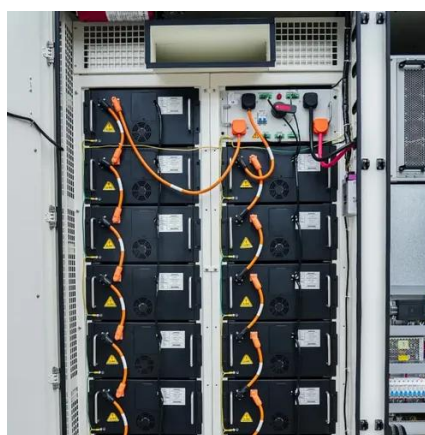


JKM635N-66HL4M-BDX 635W Solar Panel Information

See the table below for available information we have about Jinko Solar Co Ltd JKM635N-66HL4M-BDX solar panels. We do our best to provide information such as the JKM635N-66HL4M-BDX panel ...

[The High Efficiency Largest Wattage 635W Solar Panel From China ...](#)

HPSM-635w Number of Cells 144 Application Industrial Condition New Certification CE Material Monocrystalline Silicon OEM/ODM Available Module Efficiency 22.72% Junction Box IP67 Each ...



Datasheet Jinko Tiger Neo N-type 615-635W

Better light trapping and current collection to improve module power output and reliability. Excellent Anti-PID performance guarantee via optimized mass-production process and materials control. The N ...

[Jinko 615W 635watt Chinese newest high watt solar photovoltaic plant](#)

Jinko mono facial 615-635W Tiger Neo N-Type 78HL4 commercial grade solar photovoltaic panels for sale Brand Name: Jinko Solar Cell size: 182mmx182mm Solar Panel Efficiency:22.72%

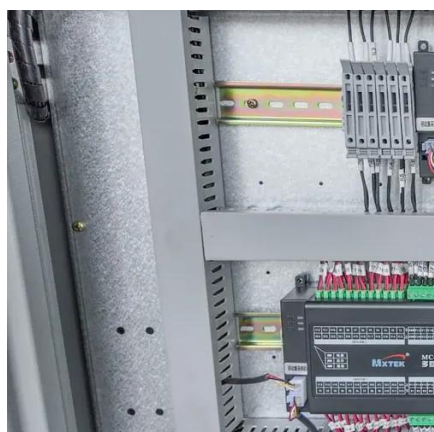


Solar Panel ...



[N Type 620W 630W 635W All Black Double Glass Solar Panel](#)

Sunpal's TOPCon BiMAX5N Bifacial Ultra Black Dual Glass solar modules utilize 182mm cells to achieve power output ranging from 410W to 635W, ensuring sufficient energy production for your ...



[What is the size of Huijue 635W photovoltaic panels](#)

Here, we have carefully selected a range of videos and relevant information about What is the size of Huijue 635W photovoltaic panels, tailored to meet your interests and needs.



[Tongwei SOLAR High power 615w-635w mono solar panel module N...](#)

Key attributes Industry-specific attributes Cell size 182mmx182mm Type PERC, Half Cell, N-TYPE, TOPCON, BIPV Panel Efficiency 22.6% ±1%



610W and 635W solar panels



The 610W and 635W are N-type solar double-glass panels. They not only increase the power generation area of the components but also enhance the photoelectric conversion efficiency, making them an ...



Solar Panel Half-cut N-Type TOPCon 635 Wp

SOLAR PANEL 635 WATTS , FULL BLACK , JINKO SOLAR , Half-cut , N-Type TOPCon , 156 Cells PV Module , Power tolerance 0/+3W , L 2465 mm , W 1134 mm , D 35 mm , 29.50 kg , Material Warranty ...

JKM615-635N-78HL4-BDV-D2-EN

Excellent Anti-PID performance guarantee via optimized mass-production process and materials control. The N-type module with Hot 2.0 technology has better reliability and lower LID/LETID. Certified to ...





Contact Us

For catalog requests, pricing, or partnerships, please visit:

<https://www.firmaskrzypek.pl>

Phone: +48 22 426 71 90

Email: info@firmaskrzypek.pl

Scan the QR code to access our WhatsApp.

