



# What kind of battery is the base station battery





## Overview

---

The Base Station takes four (4) 1. 2V, 1300mAh nickel-metal hydride (NiMH) rechargeable batteries. Regular alkaline batteries should never be inserted into the Base Station, as they may damage the device. Choose your system to learn more. By defining the term in this way, operators can focus on. Telecom base station battery is a kind of energy storage equipment dedicatedly designed to provide backup power for telecom base stations, applied to supply continuous and stable power to base station equipment when the utility power is interrupted or malfunctions, which plays a vital role in the. Reliable telecom battery backup systems are the backbone of uninterrupted base station operations. 8 billion by 2032, selecting robust solutions becomes indispensable for telecom applications.



## What kind of battery is the base station battery

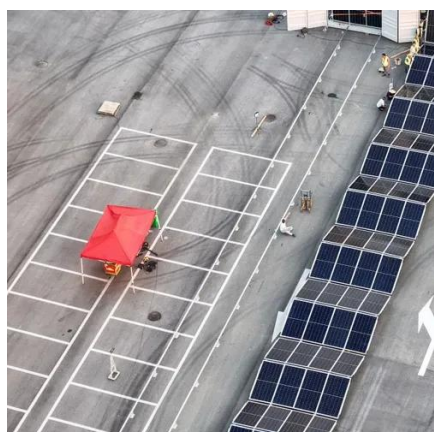


### [Communication Batteries: Why Telecom Base Stations Have Unique ...](#)

This article clarifies what communication batteries truly mean in the context of telecom base stations, why these applications have unique requirements, and which battery technologies are ...

### [How To Replace Base Station Batteries , SimpliSafe Support Home](#)

The Base Station takes four (4) 1.2V, 1300mAh nickel-metal hydride (NiMH) rechargeable batteries. Regular alkaline batteries should never be inserted into the Base Station, as they may damage the ...

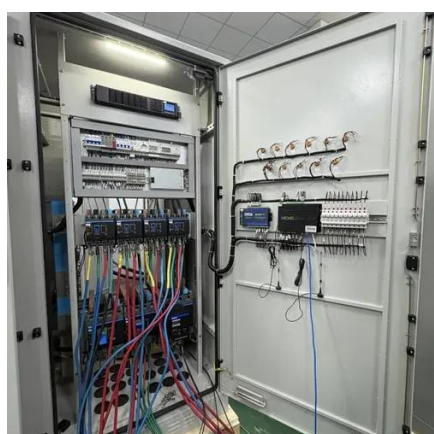


### [Premium 12V Base Station Battery , UN38.3 Certified , 5000+ Cycles](#)

Premium 12V LiFePO4 batteries engineered for Base Station applications. Never experience battery failure again with aerospace-grade construction, 10-year warranty, and 5000+ cycle lifespan.

### [What is Li-Ion Battery For 5G Base Station? Uses, How It](#)

In essence, Li-ion batteries for 5G base stations are vital components that ensure network resilience, reduce downtime, and facilitate rapid deployment of next-generation wireless ...



## [Choosing a 12V Battery for Your Mobile Base Station](#)

Unlike typical car batteries designed for short bursts of high power, base stations demand a consistent, lower power output over extended periods. This distinction makes deep-cycle batteries the preferred ...

## Base Power Battery Specifications , Compare Models

Compare Base Power's home battery systems - from our streamlined 20kWh wall-mount to our advanced 50kWh ground-mount solution. View complete technical specifications.



## [How to Select the Best ESTEL Battery Backup for Base Stations](#)

Two common options for telecom applications are lead-acid and lithium-ion batteries. Each has distinct advantages and limitations. Lead-Acid Batteries: These are the heaviest option and ...

## Overview of Telecom Base Station



## Batteries

In terms of technical realization, telecom energy storage systems usually adopt lead-acid batteries or lithium ion solar batteries as the energy storage medium.



### [Telecom Base Station Backup Power Solution: Design Guide for 48V ...](#)

Among various battery technologies, Lithium Iron Phosphate (LiFePO4) batteries stand out as the ideal choice for telecom base station backup power due to their high safety, long lifespan, ...

### [Ultimate Guide to Base Station Power Selection: Lithium vs. Lead ...](#)

LiFePO4 is the preferred lithium battery chemistry for telecom base stations, known for its high performance and long lifespan. High energy density (120-180 Wh/kg) -- about three times that

...





## Contact Us

---

For catalog requests, pricing, or partnerships, please visit:

<https://www.firmaskrzypek.pl>

Phone: +48 22 426 71 90

Email: [info@firmaskrzypek.pl](mailto:info@firmaskrzypek.pl)

Scan the QR code to access our WhatsApp.

