



# What size inverter should I use with a 12v 160 lithium battery





## Overview

---

After hands-on testing and side-by-side comparison, I confidently recommend the BELTTT 2000W Pure Sine Wave Inverter as your best-sized inverter for a 12-volt battery—perfect when power quality and capacity really matter. 12V, 24V, 48V—they have to be the same. You can't run a 12V battery on a 48V inverter. If you only learn one thing from this page, this needs to be it. The simple, non-negotiable rule: Your battery Continuous. Pairing a right size capacity battery for an inverter can be a bit confusing for most the beginners So I have made it easy for you, use the calculator below to calculate the battery size for 200 watt, 300 watt, 500 watt, 1000 watt, 2000 watt, 3000 watt, 5000-watt inverter Failed to calculate field. Your inverter and battery must work seamlessly together. - A 5 kW hybrid inverter typically pairs well with a 5–10 kWh battery. - Oversizing the battery can lead to underutilization, while undersizing. When using high-performance lithium iron phosphate (LiFePO<sub>4</sub>) batteries, selecting the correct inverter is not just a recommendation—it's essential for safety, efficiency, and longevity. The right pairing ensures your entire system works in harmony, delivering reliable power when you need it.



## What size inverter should I use with a 12v 160 lithium battery



### [The Ultimate Guide to Matching Your Lithium Battery and Inverter](#)

Conclusion: With that battery, you can run a 2500W inverter with a healthy safety margin. Its high cycle life and incredibly flat voltage curve mean it's a solid foundation for a powerful system.

### [Calculate Battery Size For Any Size Inverter \(Using Our Calculator\)](#)

Learn how to size and pair a battery with your solar inverter in 2025. Discover key ratios, examples, and Growatt solutions for optimal solar + storage system design.

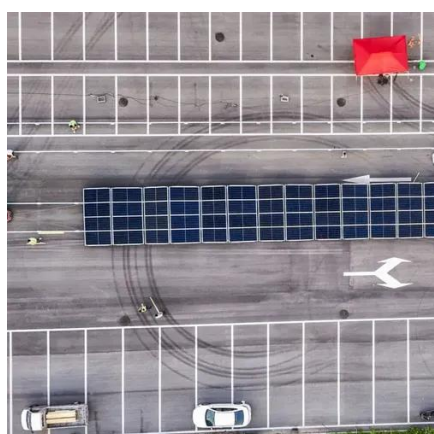


### **Calculate Battery Size for Inverter Calculator**

Calculate Battery Size for Inverter Calculator helps you determine the optimal battery capacity needed to support your inverter system.

### [How to Size and Pair a Battery with Your Inverter in 2025: Advanced](#)

Learn how to size and pair a battery with your solar inverter in 2025. Discover key ratios, examples, and Growatt solutions for optimal solar + storage system design.

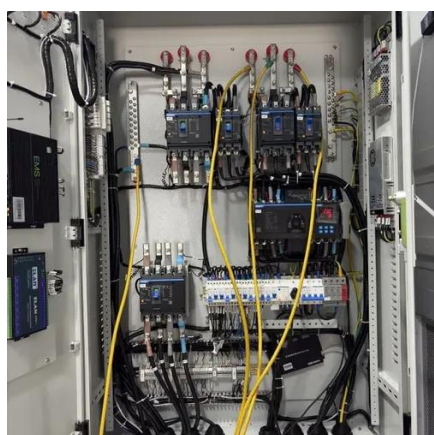


### [Determining the Solar and Inverter Size Needed to Charge a Battery](#)

This guide will walk you through everything you need to know to calculate the optimal size of your solar and inverter setup to charge batteries effectively and safely.

### [How to Choose the Right Inverter for a Lithium Battery System](#)

Choosing the wrong inverter for lithium battery use can lead to inefficiency, system instability, or even battery damage. Unlike lead-acid systems, lithium batteries operate across a different voltage curve, ...



### **best sized inverter for 12 volt battery**

After hands-on testing and side-by-side comparison, I confidently recommend the BELTTT 2000W Pure Sine Wave Inverter as your best-sized inverter for a 12-volt battery--perfect when ...

### [How to Select the Right Inverter for Your](#)



## [Lithium Battery Pack](#)

A definitive inverter selection guide for lithium battery systems. Learn the crucial differences between AC and DC coupling, key compatibility factors, and system design principles to ...



## [How to Determine Battery Sizes when using an Inverter](#)

Once you know the hourly DC Amp draw you can size the battery using our calculator for sizing a 12v battery to a load. We hope this information will help you in selecting the proper inverter ...



114KWh ESS



## [Can an Inverter Be Too Big for Your Battery System?](#)

Match the inverter's continuous wattage rating to the battery's discharge capacity. For a 12V 200Ah battery (2.4kWh), a 2000W inverter is ideal. Formula: Inverter Wattage  $\leq$  (Battery Voltage  $\times$  Ah ...



## [Calculate Battery Size For Any Size Inverter \(Using Our Calculator\)](#)

To recharge your battery from time to time you would need the right size solar panel to do the job! Read the below article to find out the suitable solar panel size for your battery bank



## Contact Us

---

For catalog requests, pricing, or partnerships, please visit:

<https://www.firmaskrzypek.pl>

Phone: +48 22 426 71 90

Email: [info@firmaskrzypek.pl](mailto:info@firmaskrzypek.pl)

Scan the QR code to access our WhatsApp.

