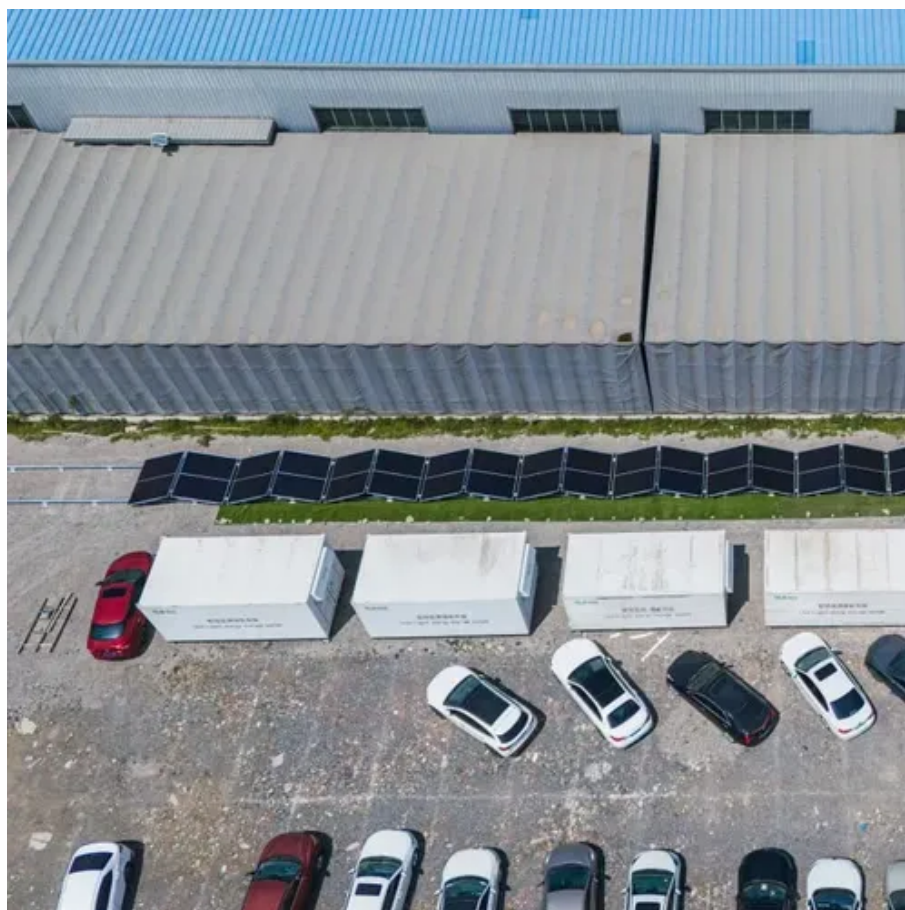




What size is a 625 watt photovoltaic panel





Overview

Dimensions: 2465×1134×30 mm, precisely engineered for efficient solar panel installation. A typical 100-watt solar panel is 41. A typical 300-watt solar panel is. Solar panel size is measured in watts (W) and indicates how much electricity the panel can produce under standard test conditions. Here's the key distinction every homeowner should understand: Most residential solar panels in 2025 come in three main configurations: The most common choice for. improve module power output and reliability. optimized mass-production process and materials control. has better reliability and lower LID/LETID. Because the size of a standard solar panel can vary, a chart that outlines the wattage capabilities of each can be crucial when asking, how many solar panels do I need?

In order to avoid. Jinko 625W solar panel, which is monocrystalline, is considered to be one of the best solar modules available. 5 feet wide and weigh between 40 to 50 pounds. However, the exact dimensions depend heavily on the panel's technology, wattage, and the manufacturer's design. Understanding these specifications is crucial for determining roof.



What size is a 625 watt photovoltaic panel



[Solar Panel Size and Wattage Chart: Standard Sizes & Uses for Each](#)

Using a solar panel size chart can help you choose the best types of solar panels for your home or application. Because the size of a standard solar panel can vary, a chart that outlines the ...

[The Ultimate Guide to Solar Panel Size, Weight & Wattage \(2025\)](#)

Find the exact solar panel size & weight in our 2025 guide. Our complete chart compares models by ft/cm and lbs/kg to help you plan your installation.



Shiban PowerMax 625 - Shiban Energy

Dimensions: 2465×1134×30 mm, precisely engineered for efficient solar panel installation. Weight: A well-balanced 34.6 kg, ideal for both residential and commercial installations.

[Solar Panel Size & Dimensions Guide 2025, Complete Specs](#)

What is the actual physical size of a standard residential solar panel in 2025? A standard residential solar panel measures 65-66 inches long by 39-40 inches wide by 1.5-2.0 inches thick, ...



Photovoltaic panel 625 size

Dimensions: 2465×1134×30 mm, precisely engineered for efficient solar panel installation.
Weight: A well-balanced 34.6 kg, ideal for both residential and commercial installations.



[JA 600Watt 610Watt 625 Watt Bifacial Mono Solar Panel](#)

Brand Name: JA Solar Cell size: 210mmx210mm
Solar Panel Efficiency:22.4% Solar Panel Size:
2465*1134*35mm Model Number: JAM78D40 MB
600-625W Solar Cells: Mono-16BB No. of Cells: ...



Jinko Solar Panel 625W

Monocrystalline solar panels have higher efficiency and durability. Also, the Jinko 625W solar panel is a premium quality module with dimensions of 2465x1134x35 mm and an impressive module efficiency ...



[QCELLS Q.TRON XL-G2.3/BFG 625W](#)



Bifacial Solar Module

The QCELLS Q.TRON XL-G2.3/BFG 625W N-Type Bifacial Solar Module is a high-performance solar panel designed for commercial, industrial, and utility-scale applications.



Solar Panel Size Guide (with 4 Charts)

Solar panel sizes are measured in two ways: watt output and physical dimensions. Physical dimensions refer to the height, length and width of the solar array. The wattage refers to how much power the ...

Modular design,
unlimited combinations in parallel
BUILT-IN DUAL FIRE PROTECTION MODULE



Standard Solar Panel Sizes And Wattages (100W-500W Dimensions)

The goal here is to get to the average solar panel size by wattage. You can find typical dimensions of 100W, 150W, 170W, 200W, 200W, 220W, 300W, 350W, 400W, and 500W solar panels summarized ...





Contact Us

For catalog requests, pricing, or partnerships, please visit:

<https://www.firmaskrzypek.pl>

Phone: +48 22 426 71 90

Email: info@firmaskrzypek.pl

Scan the QR code to access our WhatsApp.

