

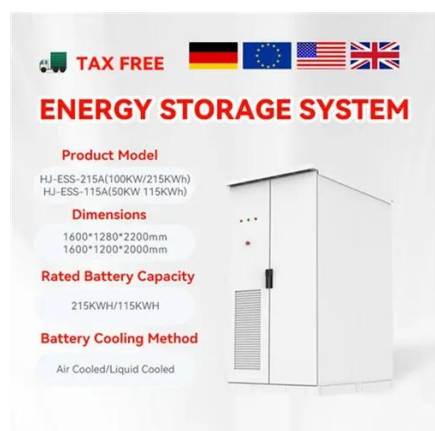


What size solar panel should I use with a 2w water pump inverter





What size solar panel should I use with a 2w water pump inverter

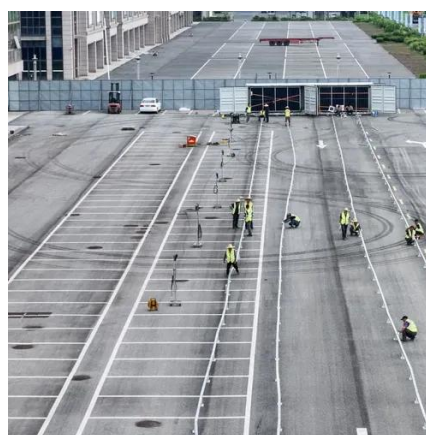


[What size solar panel do I need to run a water pump?](#)

The size of the solar panel will vary depending on the pump that best fits your needs. The number of solar panels will depend on the wattage that a particular pump will need to operate, the phase type of ...

[How to Calculate Solar Panel, Battery, and Inverter Size](#)

In general, your inverter capacity should be approximately the same size as the total wattage of your solar panels. This ensures that the inverter operates at its most efficient point, which ...



[How to Choose the Right Size Solar Inverter: Step-by-Step with Real](#)

Wondering what size solar inverter do I need for your solar system? This guide walks you through calculating inverter size based on panel capacity, power usage, and safety margins.

[How to Match Solar Panel Inverter Size to Your System Output](#)

Most solar professionals recommend sizing your inverter for solar panels between 75% and 115% of your total panel wattage, with the sweet spot around 1:1.15 --meaning your inverter is ...



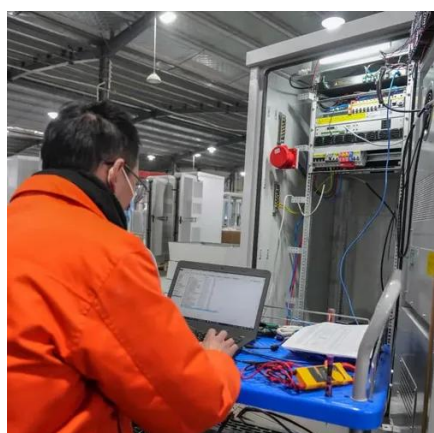
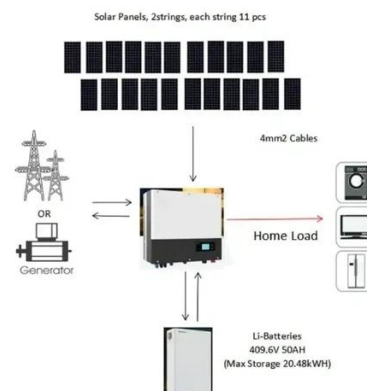
How Many Solar Panels for a Solar Water Pump?

Classic AC pumps can be adapted using a solar controller or inverter, but they generally require more power for the same water output due to energy conversion losses. The type of pump you choose is ...



What Type of Solar Panel Do You Need for a Water Pump?

To ensure optimal performance of your water pump, you need solar panels that match the wattage requirements of your pump. Typically, 100 to 375-watt panels are used, depending on the ...



Inverter Size Calculator - self2solar

Determining the correct inverter size depends on your solar array's capacity and your household's power needs. Generally, the inverter should be sized to match about 80-100% of your ...

DIY Solar Calculator: Size Panels,



[Batteries & Inverter](#)

Inverter Size (W): The inverter you'll need to handle your loads. Here are some trusted products to get you started: Q: How accurate is this calculator? A: It provides planning estimates. ...



[How Many Solar Panels Do You Need to Run a Water Pump?](#)

To run a water pump on solar, multiply the pump's power by 1.5 to calculate the total solar panel wattage needed. For example, a 1000W pump requires at least 1500W of solar panels.

[Solar Inverter Sizing Guide: How to Size Your Inverter](#)

Learn how to properly size your solar inverter with our complete guide. Discover the optimal DC-to-AC ratio and avoid costly sizing mistakes.





Contact Us

For catalog requests, pricing, or partnerships, please visit:

<https://www.firmaskrzypek.pl>

Phone: +48 22 426 71 90

Email: info@firmaskrzypek.pl

Scan the QR code to access our WhatsApp.

