



# What to do if the wind is too strong for a wind turbine





## Overview

---

In conditions where extreme winds exceed the design limits of a wind turbine, operators can initiate a full shutdown of the turbine as a last resort. This involves locking the rotor and feathering the blades to minimize wind exposure. Find out how wind turbines survive severe storms, like hurricanes and tornadoes, and how you can stay safe. Extreme weather events, such as tornadoes and hurricanes, are presenting communities. However, when wind speeds surpass a modern utility-scale turbine's rated wind speed, the blades begin to feather or point into the wind to reduce their surface area.



## What to do if the wind is too strong for a wind turbine



### [How Do Wind Turbines Protect Themselves in Extreme Winds?](#)

In conditions where extreme winds exceed the design limits of a wind turbine, operators can initiate a full shutdown of the turbine as a last resort. This involves locking the rotor and ...

### **How do wind turbines cope with extreme weather ...**

Learn how wind turbines cope with high winds, storms, lightning, ice, and snow, and what innovations are being developed for the future.



### [When Winds Are Strong, What Happens To Wind Turbines?](#)

Modern wind turbines are set to stop turning automatically if there is too much energy in the wind. Some will shut down if the average wind speed is 30mph. When winds exceed 55 MPH, a ...

### [Protecting your Wind Turbines from extreme weather conditions](#)

Wind turbines are built to withstand harsh weather conditions, but extreme elements like high winds, heavy rain, and lightning can pose serious risks. Excessively strong winds may bend or ...



### What happens to a wind turbine if the wind is too strong?

Wind turbines need wind to produce electricity. When the wind is too slow or too strong, the turbine may not generate electricity efficiently.

## **Adapting Your Wind Turbine to Extreme Weather**

By designing wind turbines with strong construction, automatic shutdown systems, blade heating, lightning protection, and specialized coatings, we can ensure that they continue to generate ...



## **How Extreme Weather Can Impact Your Wind Turbine**

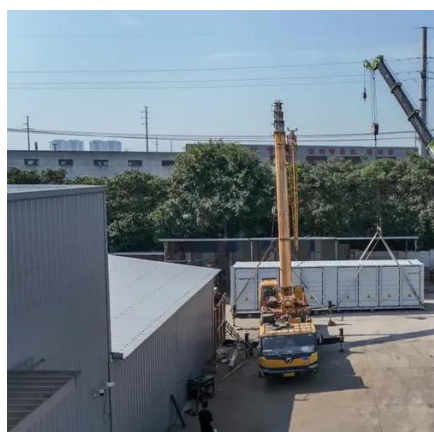
Strong winds can damage rotor blades, causing them to bend, break, or even damage the turbine's structure, leading to a complete shutdown. This makes it crucial to invest in turbines that ...

[Wind farm FAQ: Weather resilience on](#)



## wind turbines , Vaisala

Wind turbines are greatly affected by the weather. Key factors include wind speed and direction, which are crucial for proper alignment and safety. Other factors like pressure, temperature, ...



## **What happens when it's too windy?**

But when extreme weather and very strong winds hit, turbines sometimes need to be shut off. All modern wind turbines are set to stop turning automatically if there's too much energy in ...

## How Do Wind Turbines Survive Severe Weather and Storms?

Wind turbines need to protect themselves just as communities do during severe weather events and storms. Find out how wind turbines survive severe storms, like hurricanes and tornadoes, ...

**TAX FREE**    

**Product Model**  
HJ-ESS-215A(100KW/215KWh)  
HJ-ESS-115A(50KW/115KWh)

**Dimensions**  
1600\*1280\*2200mm  
1600\*1200\*2000mm

**Rated Battery Capacity**  
215KWH/115KWH

**Battery Cooling Method**  
Air Cooled/Liquid Cooled

**ENERGY STORAGE SYSTEM**



## Contact Us

---

For catalog requests, pricing, or partnerships, please visit:

<https://www.firmaskrzypek.pl>

Phone: +48 22 426 71 90

Email: [info@firmaskrzypek.pl](mailto:info@firmaskrzypek.pl)

Scan the QR code to access our WhatsApp.

