



# Where is pioneer 10 now





## Overview

---

Pioneer 10 is currently in the constellation of Taurus. The current apparent celestial. In 2016, NASA estimated Pioneer 10 to be approximately 10 billion miles from Earth, traveling 26,900 mph. If it doesn't get hit or destroyed by space debris, it'll be surpassed by the still active Voyager 2 probe in 2019. [6] Pioneer 10 became the first of five artificial objects to achieve the escape velocity needed to leave the Solar System. To watch just the voyagers, and follow their path from launch till now, please see the voyager flight path tour page.



## Where is pioneer 10 now



### Why is Voyager 1 faster than all other space probes?

It overtook Pioneer 11 some time in the late 1980s, and then Pioneer 10--becoming the probe farthest from Earth--on February 17, 1998. Voyager 2 is also moving faster than the probes ...

### Pioneer 10 and 11 and Voyager I and II Spacecraft Flight Paths

Now, Pioneer 10 is approximately 17 billion km from the Sun. If it encounters no obstacles on its way to Aldebaran, the station will ...



### Are the computers on Pioneer 10 & 11 still running?

28 So, I have been wondering. Pioneer 10 and 11 went silent because there wasn't enough power left to operate the antenna. But what happened after that? Was there still enough ...

## technology

Pioneer 10 & its twin probe Pioneer 11 reference  
Courtesy of Uwe's response on my question :-  
Pioneer 10 was planned for 21 months of operation. It did work 31 years, that is 16 times ...



## GRADE A BATTERY

LiFePO4 battery will not burn when overcharged, over discharged, overcurrent or short circuited and can withstand high temperatures without decomposition.



## [Where are Pioneer 10, 11 and the Voyagers ultimately headed?](#)

38 Pioneer 10, Pioneer 11, and the two Voyagers are all headed out of the solar system. Has anybody extrapolated where they will all end up (if at all)? Is there a graphic that depicts the direction of flight ...



## Where Are Pioneer 10 & 11

See where Pioneer 10 and 11 are right now in the sky with this interactive simulator. Learn about their paths, fields of view, magnifications and more.



## Pioneer 10

Overview  
Mission background  
Mission profile  
Current status and future  
Pioneer plaque  
Pioneer 10 in popular media  
See also  
External links

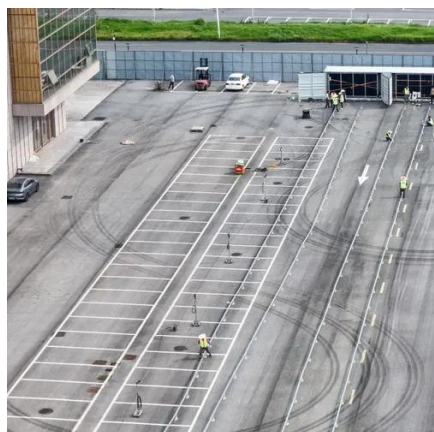
Pioneer 10 (originally designated Pioneer F) is a NASA space probe launched in 1972 that completed the first mission to the planet Jupiter. Pioneer 10 became the first of five artificial objects to achieve the escape velocity needed to leave the Solar System. This space exploration project was conducted by the NASA Ames Research Center in



California. The space probe was manufactured by TRW Inc.

## LIVE REAL TIME SATELLITE TRACKING AND PREDICTIONS: ...

Select any satellite orbiting the Earth and check where is located now. Check satellite passes over your location and receive alerts on your phone



## **Pioneer 10 Has Been Navigation Deep Space For ...**

March 2 marked the 50th anniversary of Pioneer 10. NASA honored the small spacecraft for its achievements. The dormant spacecraft is now heading ...

## **Pioneer 10**

Pioneer 10 was the first NASA mission to the outer planets, launched in 1972 and lasting more than 30 years. It flew by Jupiter in ...



## What were the speeds of Pioneer 10 and Voyager 1 when Voyager ...

On the 14th of February 1998 Voyager 1 passed Pioneer 10 to become the most distant human-made object in space, 10.4 billion kilometres from Earth (69.4 AU from the Sun). What were ...



### [Where Is Pioneer 10? Location in the Sky and Visibility , TheSkyLive](#)

Pioneer 10 is currently in the constellation of Taurus. Right now, from Greenwich, UK (change location), Pioneer 10 can be observed looking in the West at an altitude of 35.84 degrees ...



### [Why was radio contact with Pioneer lost earlier than with Voyager?](#)

30 Why was radio contact lost with the Pioneer probes much earlier than with the Voyager probes? The Voyagers were launched only 4 years after the Pioneers, yet the Voyagers are ...

### **What significance did Pioneer 10 & 11 have?**

The images taken by Pioneer 10 and 11 were of much lower quality than those of later planetary probes. I wonder if this is representative also for their other instruments. For example, they don't s



### **Where Is Pioneer 10 Now?**



Nobody knows exactly where this probe is nowadays. NASA lost contact with it in 2003, ending a 30-year mission. But there's a milestone here: It's now ...



## interstellar travel

Why didn't Pioneer 10 (as well as its twin probe Pioneer 11) keep up communications with Earth as the Voyagers do? As Pioneers and Voyagers were all launched in the 70's, presumably ...



## Where Is Pioneer 10 Now

Where Is Pioneer 10 Now? As of 2023, Pioneer 10 is approximately 13.2 billion kilometers (8.8 billion miles) from Earth, traveling in the direction of the constellation Taurus. It ...



## Contact Us

---

For catalog requests, pricing, or partnerships, please visit:

<https://www.firmaskrzypek.pl>

Phone: +48 22 426 71 90

Email: [info@firmaskrzypek.pl](mailto:info@firmaskrzypek.pl)

Scan the QR code to access our WhatsApp.

