



# Which side of the solar panel





## Overview

---

In most cases, the best direction for solar panels is facing south 1. Arrays that are appropriately oriented can improve energy output by up to 30% or more 2. However, factors such as roof slope and proximity to the equator may have some homeowners considering other directions. Orientation Impact is Massive: The difference between optimal and poor solar panel placement can impact energy production by up to 30%, making proper positioning one of the most critical factors in maximizing your solar investment return. The cardinal directions are the north, south, east, or west, and they depend on your location and the.



## Which side of the solar panel



### [What Side of House is Best for Solar Panels \(Solar Panel Placement ...](#)

Learn the best direction for solar panels to optimize energy efficiency and savings. Find expert advice on positioning your panels for maximum ...

### [Solar Panel Placement: Best Direction & Orientation Guide](#)

For homeowners in the northern hemisphere, south-facing panels are ideal. Since the sun travels across the southern half of the sky, this direction ensures maximum exposure throughout the day. Studies ...



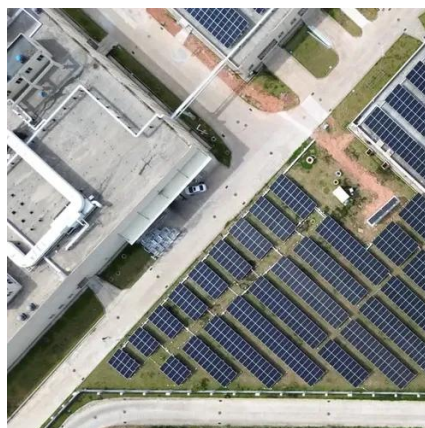
### [Solar Panel Orientation: Everything You Need to Know](#)

To determine the best orientation for your solar panels, you must take into account key factors, which include the direction, angle, and efficiency of the panels. Direction refers to the ...



### [Solar Panel Direction & Orientation: 2025 Complete Guide](#)

Discover the optimal direction and angle for solar panels to maximize energy output. Complete guide with calculations, tools, and location-specific recommendations for 2025.



### [What Direction Should Your Solar Panels Face? , Angi](#)

In the United States, your solar panels should face true south, but east- or west-facing panels are still a viable option. In the southern hemisphere, you'll want to face your panels true north. ...



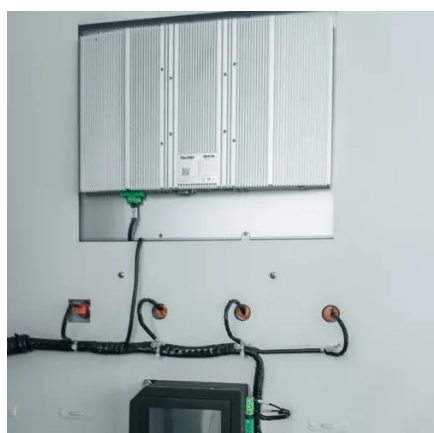
### [Best Practices for Solar Panel Placement and Orientation](#)

Solar panels will be most effective when placed on the roof facing true south. This way, they'll be directly in the sun in the middle of the day and receive optimal sunlight absorption. What Side of the House is ...



### [What Direction Should Solar Panels Face? Understanding the Basics ...](#)

The optimal direction for solar panels to face is generally south in the Northern Hemisphere, as this orientation maximizes sunlight capture throughout the day, potentially increasing energy generation ...



### [What Side of House is Best for Solar](#)



## [Panels \(Solar Panel Placement ...](#)

The best side of the house for solar panels is the side that gets the most sun exposure throughout the day. While there are many factors to consider when determining the best location for ...

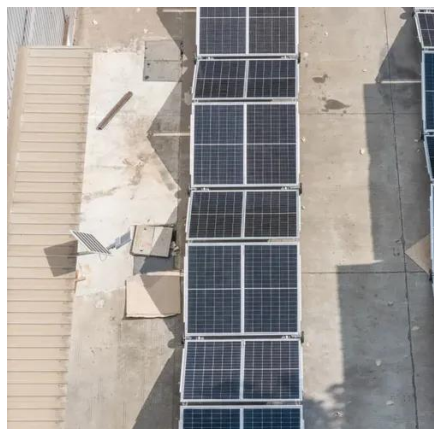


## [Maximize Efficiency: Best Direction for Solar Panels , Sunrun](#)

Learn the best direction for solar panels to optimize energy efficiency and savings. Find expert advice on positioning your panels for maximum performance.

## [Best Direction for Solar Panels to Maximize Savings -- SolarReviews](#)

In the United States, the best direction for solar panels to face is south as it exposes them to the most sun and allows them to produce the most electricity possible. Solar panels that face east or west will ...



## **What Side of Roof Should Solar Panels Be On**

This article explores the optimal roof orientation for solar panels in the United States, taking into account geographical location, sun path, and roof design for maximizing solar energy ...



## Contact Us

---

For catalog requests, pricing, or partnerships, please visit:

<https://www.firmaskrzypek.pl>

Phone: +48 22 426 71 90

Email: [info@firmaskrzypek.pl](mailto:info@firmaskrzypek.pl)

Scan the QR code to access our WhatsApp.

