



Which type of radiation does the solar container communication station inverter belong to





Overview

The electromagnetic radiation emitted by solar inverters is primarily in the form of radio frequency interference (RFI), which can potentially interfere with nearby electronic devices or communication systems. The Federal Aviation Administration (FAA). Solar panels emit low levels of EMF radiation, which is harmless, except at night or when not in use. Solar panels do emit some EMFs, but they are still within safe limits set by international safety. Ionizing radiation, including high-energy particles, X-rays, gamma rays, and high-energy ultraviolet rays, can potentially damage the atomic or molecular structure of biological tissues, posing risks to human health. Only ionizing radiation (like X-rays) poses DNA-level risks. The station houses two ABB central inverters and embedded auxiliary power, monitoring easy and rapid connection to a MV transformer station.



Which type of radiation does the solar container communication station

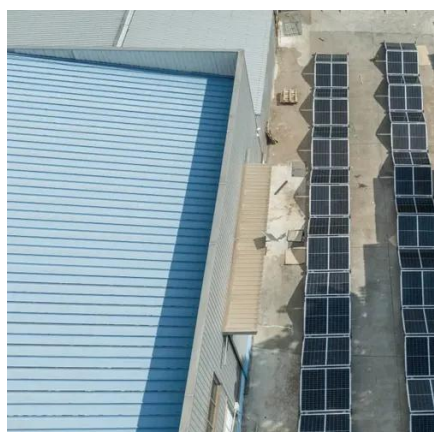


Solar Integration: Inverters and Grid Services Basics

As more solar systems are added to the grid, more inverters are being connected to the grid than ever before. Inverter-based generation can produce energy at any frequency and does not have the same ...

WHY PV MODULES AND INVERTERS ARE RADIATION SAFE

While inverters do emit a minimal amount of electromagnetic radiation during operation, this radiation is typically faint. To safeguard public health, inverter manufacturers adhere to stringent international ...



photovoltaic Flashcards , Quizlet

Photons striking a solar cell must have energies above a certain minimum energy level to create the photovoltaic effect. Higher energy photons are associated with which of the following?

Solar container communication station inverter grid-connected

High-efficiency Mobile Solar PV Container with foldable solar panels, advanced lithium battery storage (100-500kWh) and smart energy management. Ideal for remote areas, emergency



Solar container communication station inverter AC to DC

Modular solar power station containers represent a revolutionary approach to renewable energy deployment, combining photovoltaic technology with standardized shipping



Photovoltaic Inverter Radiation Range: Facts vs. Fiction

Let's cut through the noise: photovoltaic inverters do emit electromagnetic fields (EMF), but comparing their radiation range to something like a microwave oven is like comparing a campfire to a volcano.



Electro-Magnetic Interference from Solar Photovoltaic Arrays

Electro-magnetic interference (EMI) is typically taken to mean radiofrequency (RF) emissions emanating from PV systems impacting nearby radio receivers, but can also include interference with ...



Public solar container communication



station inverter grid ...

The integrated containerized photovoltaic inverter station centralizes the key equipment required for grid-connected solar power systems -- including AC/DC distribution, inverters, monitoring,



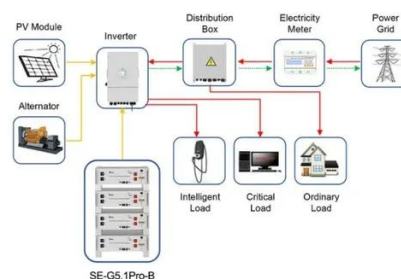
Do Solar Inverters Emit Radiation

The electromagnetic radiation emitted by solar inverters is primarily in the form of radio frequency interference (RFI), which can potentially interfere with nearby electronic devices or ...

Understanding Photovoltaic Inverter Radiation: Safety, Myths, and Facts

As solar energy adoption surges globally, concerns about photovoltaic (PV) inverter radiation have become a hot topic. With over 1.2 terawatts of solar capacity installed worldwide by Q1 2025, it's

...



Application scenarios of energy storage battery products



Contact Us

For catalog requests, pricing, or partnerships, please visit:

<https://www.firmaskrzypek.pl>

Phone: +48 22 426 71 90

Email: info@firmaskrzypek.pl

Scan the QR code to access our WhatsApp.

