



Why does snow fall on photovoltaic panels





Overview

When snow covers your solar panels, sunlight can't reach the photovoltaic cells. As a result, panels cannot generate power without light. Even if your panels are partially covered with snow, it may lead to a significant. Clearing snow buildup from your PV panels is critical to getting the most from your solar power system. In reality, the PV systems still work effectively, sometimes better than during the summer heat. Fewer. What happens when solar panels get covered in snow in winter?

Does some sunlight make it through the snow?

Does the power output of the panels drop considerably?

Is it worth it to go scrape the snow off the panels if temperatures will remain below freezing?

How hard is this to do for rooftop solar. Understanding the interaction between snow and solar panels can help you make informed decisions about your energy systems, especially if you live in regions prone to heavy snowfall. It's not just about aesthetics; it's about efficiency, maintenance, and maximizing your investment in solar. Photovoltaic systems are particularly challenged in winter. Photovoltaic systems are exposed to wind and weather every day.



Why does snow fall on photovoltaic panels

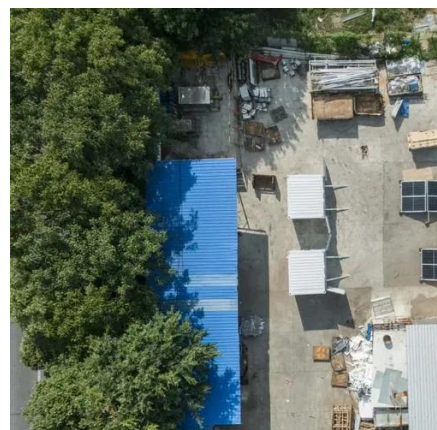


[Understanding Snow Load on Solar Panels: Impacts and Design Strategies](#)

When snow accumulates on a panel surface, it blocks sunlight from reaching the solar cells, thereby reducing energy production. The extent of this reduction is contingent upon various factors, such as ...

[How Does Snow Affect Solar Panels and What Can You Do About it?](#)

Allowing a significant amount of snow to remain on your solar panels will reduce your system's efficiency and the amount of power your solar array can capture. Having a plan to remove snow buildup from ...



[How Does Snow Affect Solar Panels? Facts & Smart Solutions](#)

When snow blankets your solar panels, sunlight can't penetrate through it, preventing photovoltaic cells from producing power. Whether the snow on solar panels is dense or light, it can diffuse and scatter sunlight, ...

Do solar panels work with snow on them

When winter storms roll in, snow accumulation on solar panels is inevitable.



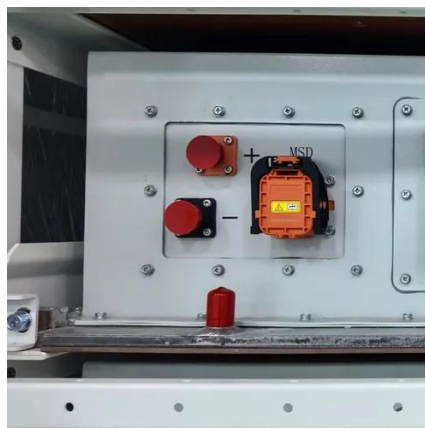
[Winter-Proof Your Solar Panels: Expert Snow Management Tips](#)

A common issue with flat solar panel installations in snowy regions is the potential for ice formation. Ice can cling stubbornly to flat surfaces, effectively blocking sunlight and reducing energy output ...



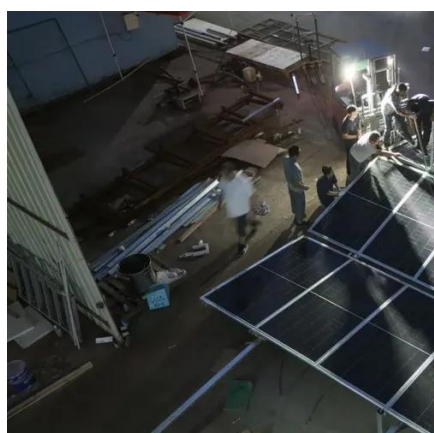
[How Does Snow Cover Affect Solar Panel Power Output?](#)

Does snow cover affect voltage, current, or both? Make sure you keep other factors, like the time of day and solar panel orientation, constant as you change the thickness of the layer of snow. Note: the ...



Snow load: significance and impact on PV systems

Photovoltaic systems are particularly challenged in winter. Find out what effects snow loads can have on your system. Photovoltaic systems are exposed to wind and weather every day. Winter is ...



[Do Solar Panels Work In Winter Snow?](#)



[Complete 2025 Guide](#)

Solar panels work effectively in winter snow with only 1-5% production loss. Learn why cold weather improves efficiency, safety tips for snow removal, and real performance data.



[How Does Snow Affect Solar Panels? Key Insights and Tips](#)

Snow can have a dual effect on solar panels. On one hand, it can obstruct sunlight, reducing energy production. On the other hand, the reflective properties of snow can enhance the performance of solar ...

[The Truth About Solar Panels in Winter Snow: Performance and Care](#)

So, while snow does not cause solar panels to stop generating electricity, it does influence performance. When the modules are covered with a thick layer of snow, they allow too little light to pass ...





Contact Us

For catalog requests, pricing, or partnerships, please visit:

<https://www.firmaskrzypek.pl>

Phone: +48 22 426 71 90

Email: info@firmaskrzypek.pl

Scan the QR code to access our WhatsApp.

