



# Wind power generation data table





## Overview

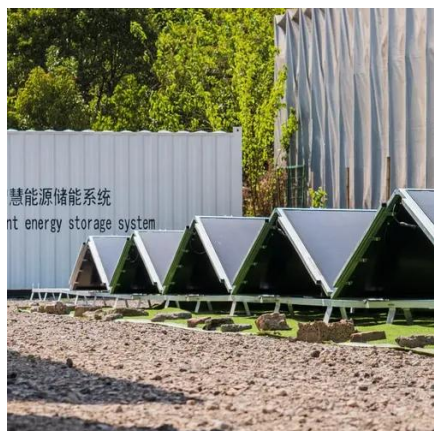
---

Our database provides direct and immediate access to information about regions, countries, manufacturers, types and numbers of turbines, hub heights, MWs/GWs, developers, operators, owners, and commissioning dates. Annual electricity generation from wind is measured in terawatt-hours (TWh) per year. This includes both onshore and offshore wind sources. The Wind Power tabulates data from a variety of players in the worldwide industry — wind farm developers, operators and owners, turbine manufacturers, to. Select or search for an area or point using the query tools on the map to download large-scale data. Create query for large-scale data download. Higher mean wind speeds normally indicate better wind resources, but mean wind power density gives a more accurate indication of the available wind resource. Zoom in to see individual datasets, represented in blue. Something went wrong! Please email our team if this issue persists. The Wind Data Hub, or. The Wind Power is a comprehensive database of detailed raw statistics on the rapidly growing sphere of wind energy and its supporting markets.



## Wind power generation data table

---



### [Wind Power Database · IEEE Task Force on Data Sharing in Energy ...](#)

The Wind Power is a comprehensive database of detailed raw statistics on the rapidly growing sphere of wind energy and its supporting markets. The Wind Power tabulates data from a variety of players in ...



### **Open Data , IEA Wind TCP**

The Master Data Register of Wind Turbines is a national database which contains all Danish power producing wind turbines > 6 kW. The Register has information on location, technical specifications ...

### **WDH: Wind Data Hub**

Wind Data Hub is a resource of the Department of Energy's Wind Energy Technologies Office.



### **Global Wind Atlas**

The Global Wind Atlas is a free, web-based application developed to help policymakers, planners, and investors identify high-wind areas for wind power generation virtually anywhere in the world, and then ...



## Wind-Turbine-Dataset , IEEE DataPort

The Wind Power Technology Dataset is a comprehensive collection of data related to wind energy generation technology. This dataset encompasses a wide range of information, including ...

## The Wind Power

It contains data about wind farms, turbines, manufacturers, developers, operators, owners and also pictures and cartographical data.



## Wind Watts , NLR

WindWatts offers quick, approximate wind resource estimates. For more detailed or location-specific data, consider reaching out to local wind installers who may share insights from nearby projects. To ...

## Global Wind Power Tracker



The Global Wind Power Tracker (GWPT) is a worldwide dataset of utility-scale, on and offshore wind facilities. It includes wind farm phases with capacities of 10 megawatts (MW) or more.



## Wind power generation, 2025

Annual electricity generation from wind is measured in terawatt-hours (TWh) per year. This includes both onshore and offshore wind sources.



## Contact Us

---

For catalog requests, pricing, or partnerships, please visit:

<https://www.firmaskrzypek.pl>

Phone: +48 22 426 71 90

Email: [info@firmaskrzypek.pl](mailto:info@firmaskrzypek.pl)

Scan the QR code to access our WhatsApp.

