



Wind power generation throughout the year





Overview

Over the course of a year, modern turbines can generate usable amounts of electricity over 90% of the time. Wind plant generation performance varies throughout the year as a result of highly seasonal wind patterns. Data source: Ember (2026); Energy Institute - Statistical Review of World Energy (2025) - Learn more about this data Measured in terawatt-hours. These variations stem from changes in weather patterns, temperature differences, and wind speeds that fluctuate throughout the year. In this article, we explore how the. The U. Department of Energy's annual offshore, land-based, and distributed wind market reports, released in August 2024, show that the passage of the Inflation Reduction Act (IRA) led to significant increases in near-term wind deployment forecasts and has motivated billions of dollars of funding. rom point A to point B. It's more like a grain elevator, where the electrons generated by the wind turbines are all collected by the project and then put onto the grid with all the other electrons generated by all the other power plants. Wind projects add energy to the grid, and those electrons. Wind patterns are influenced by the Earth's rotation, the distribution of land and water, and seasonal variations.



Wind power generation throughout the year



[How do the seasons of the year affect wind energy production?](#)

Wind is an inexhaustible source of energy, but its intensity and availability change throughout the year. The seasons directly influence wind energy production, generating variations that can affect its ...

Wind Energy And Seasonal Changes - WeatherSend

Understanding wind patterns and their seasonal variations is crucial for optimizing wind energy production. Wind speeds typically increase in winter due to the temperature disparities between the ...



- IP65/IP55 OUTDOOR CABINET
- OUTDOOR MODULE CABINET
- OUTDOOR 5G BASE STATION CABINET
- WATERPROOF



U.S. Wind Energy Facts*

Wind Energy Overview he turbines themselves. T used to host turbines can continue to be used for its original purposes, such as ranching, farming, wildlife habitat, and recreation. The clean, renewable ...

[Wind generation seasonal patterns vary across the United States](#)

Nationally, wind plant performance tends to be highest during the spring and lowest during the mid- to late summer, while performance during the winter (November through February) is ...



Wind Power Facts and Information , ACP , ACP

Wind energy only marginally increases total power system variability, as most changes in wind energy output are cancelled out by opposite changes in electricity demand or other sources of supply.



[How 4 Seasonal Trends Change and Impact Wind Energy Production](#)

In this article, we explore how the seasons affect wind energy production, which season tends to produce the most wind energy, and the ongoing research aimed at optimizing wind energy ...



[Key US wind power trends and metrics to track , Reuters](#)

Wind farms have generated a record share of U.S. electricity production so far in 2024, and are the second largest source of clean power behind nuclear plants in the U.S. generation system.

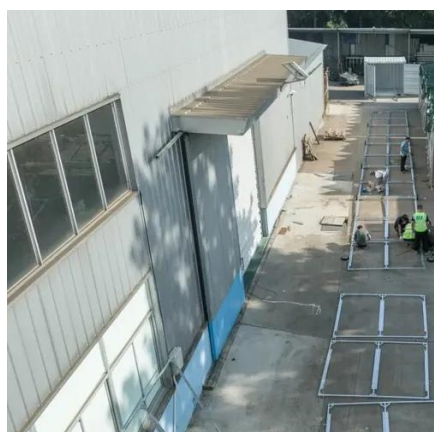


[Wind Market Reports: 2024 Edition ,](#)



Department of Energy

The Land-Based Wind Market Report: 2024 Edition provides an overview of trends in the U.S. wind power market, with a particular focus on the year 2023. This report primarily focuses on land-based, ...



Wind power generation, 2025

Wind power generation, 2025 Annual electricity generation from wind is measured in terawatt-hours (TWh) per year. This includes both onshore and offshore wind sources.

Skillful seasonal prediction of wind energy resources in the contiguous

There is a growing need of skillful seasonal wind energy prediction for energy system planning and operation.





Contact Us

For catalog requests, pricing, or partnerships, please visit:

<https://www.firmaskrzypek.pl>

Phone: +48 22 426 71 90

Email: info@firmaskrzypek.pl

Scan the QR code to access our WhatsApp.

